



# POWDERS & PASTES

Our nontoxic Thief Detection Powders and Pastes are used to trap thieves. These powders and pastes are usually applied to articles subject to theft or tampering such as currency, paper money, alarm boxes, cash drawers, etc. The color of the powder or paste selected should be compatible to the surface color of the article being treated. Upon direct contact with the article, the suspect can be easily identified by the incriminating stain on his/her hands. The special dye formulation actually intensifies and spreads once the thief attempts to wash off the stain. Usually the stain remains on the hands and clothing for days, even after several attempts to wash it off.

## Invisible Thief Detection Powder



When exposed to a long wave UV lamp (black light), these detection powders have a powerfully brilliant fluorescent quality impervious to washing. They are supplied in a variety of natural colors to blend with nearly any background to eliminate visual detection by the perpetrator.

These fluorescent detection powders are manufactured in our laboratories solely for the purpose of criminal detection. Our powders also provide excellent adhesive properties assuring transfer from the article to the suspect's hands or clothing. These Invisible Detection Powders are ideal for indoor application and are supplied in two-ounce volume jars.

Reorder No.	Description	Natural Color	Stain Color
...	€ - ... , † •• •‡	f	f "
...	€ - ... , † •• •‡	f	f f
...	€ - ... , † •• •‡	%o " S	f "
...	€ - ... , † •• •‡	%o S	f S
...	€ - ... , † •• •‡	< "	f "
...	€ - ... , † •• •‡	...	f "

## Invisible Thief Detection Paste

Our Invisible Thief Detection Pastes are manufactured in a formulation which fluoresces brilliantly when exposed to a longwave UV lamp and are specially compounded for outdoor applications. They will not harden or dissolve when exposed to the elements and are unaffected by wind, rain, heat, or cold weather. When applied in a thin film, the material remains invisible to the naked eye and transfers easily to the suspect's hands or clothing. Excellent for use on telephones, door knobs, automobiles, window sills, etc. It is available in two-ounce volume jars.



Reorder No.	Description	Natural Color	Fluoresces
...	€ - ... , † •• •‡	< "	f "
...	€ - ... , † •• •‡	f	f f
...	€ - ... , † •• •‡	...	f "
...	€ - ... , † •• •‡	CE "	f "
...	€ - ... , † •• •‡	f	f "

## Super-Invisible Thief Detection Powder



This fluorescent Invisible Detection Powder is excellent for use on almost any article subject to thieves. Super-Invisible powder is neutral in color (invisible) but fluoresces brilliant green when exposed to long wave ultraviolet light. Super-Invisible Detection Powder is recommended for indoor use and is available in two ounce and four ounce volume jars.

Reorder No.	Description	Natural Color	Stain Color
...	€ - ... , † •• •‡	Z	"
...	€ - ... , • † •• •‡	Z	"

\* All powders and pastes are packaged by volume. The net weight of the contents varies according to the color and composition.



## Super-Visible Thief Detection Powder



ular Visible Thief Detection Powder is specifically developed for dusting paper currency. The color of the powder blends with the color of the currency and stains the thief's hands during a deep purple. Visible Thief Detection Powder is available in two-ounce volume jars.

Reorder No.	Description	Natural Color	Stain Color
...	...	...	...

## Visible Multi-Stain® Thief Detection Pastes

These Thief Detection Pastes will prove, without a doubt, that the incriminating stain on a suspect's hands or clothing came from an article treated with "Multi-Stain®."

The initial stain will appear almost immediately. The secondary stain appears when the article is exposed to long wave ultraviolet light. The third stain will appear under long wave ultraviolet light after the suspect has attempted to wash off the visible stain. The fourth stain will appear several hours after contact with the treated article. This fourth stain is visible and almost impossible to remove.



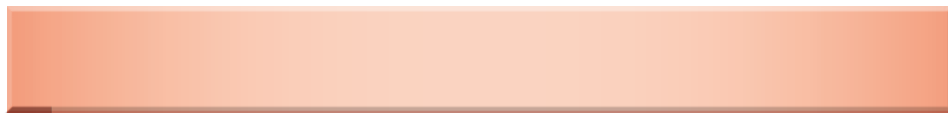
### YELLOW PASTE STAINS:

- Initial stain - Yellow
- Second stain - Fluorescent Green
- Third stain - Fluorescent Blue
- Fourth stain - Visible Purple

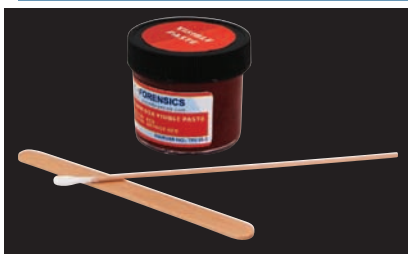
### RED PASTE STAINS:

- Initial stain - Red
- Second stain - Fluorescent Red
- Third stain - Fluorescent Blue
- Fourth stain - Visible Purple.

Reorder No.	Description	Natural Color	Stain Color
...	...	...	...



## Visible Super-Stik® Alarm Box Paste



Visible Super-Stik® Visible Alarm Box Paste is made especially for use on fire alarm boxes and contains a sticky compound that will not rub off and is difficult to remove with soap and water, even after multiple attempts. The paste sticks to the perpetrator's hands better than any other compound. It is available in two-ounce volume jars.

Reorder No.	Description	Natural Color	Stain Color
...	...	...	...

\* All powders and pastes are packaged by volume. The net weight of the contents varies according to the color and composition.

# INVISIBLE MARKERS & SPRAY

## Invisible Coin and Metal Lacquer

This liquid lacquer is used for marking coins, coin boxes, tools, and other metallic objects for identification or theft detection purposes. The lacquer leaves an invisible fluorescent mark that glows brilliantly when exposed to long or short wave UV lamps. Using a cotton-tipped applicator, simply swab the object with the lacquer and the object will be permanently marked.



Reorder No.	Description	Natural Color	Fluoresces
100, ~CE, €	€	~	f f

## Invisible Fluorescent Crayons



are a popular item to invisibly mark articles such as currency, tires, paper, metal, glass, etc., for identification and thief detection purposes. They are naturally invisible on most backgrounds, but highly fluorescent when exposed to a long or short wave UV lamp.

Reorder No.	Description	Natural Color	Fluoresces
100, ~CE, €	€	~	f
100, ~CE, €	€	~	f
100, ~CE, €	€	~	f Š

## Invisible Thief Detection Spray

Our Invisible Thief Detection Spray, a high quality emulsion of our Invisible Thief Detection Powder and a liquid agent, is specially formulated for easy application on any surface background, regardless of color. This spray can be applied to paper, cardboard, floors, doorknobs, drawer handles, cash boxes, paper money, lockers, or any article subject to tampering or theft.

When a suspect steals an article on which the spray is applied, highly fluorescent invisible specks and smears will appear on the hands, trousers, pockets, etc., when exposed to a long wave UV lamp. The fluorescent marks remain on the subject's hands for days.



Reorder No.	Description	Natural Color	Fluoresces
100, ~CE, €	€	~	f
100, ~CE, €	€	~	f "

## Invisible Fluorescent Pen



This convenient pen can be used to invisibly mark most porous surfaces such as paper, cardboard, wood, documents and paper currency. The fluorescent markings become visible when exposed to long or short wave ultraviolet light.

Reorder No.	Description	Natural Color	Fluoresces
100, ~CE, €	€	~	f f

# THIEF DETECTION KITS

## Basic Visible Thief Detection Kit

Our Basic Visible Thief Detection Kit contains all the necessary components for both indoor and outdoor use. This kit comes with a selection of natural color powders and pastes, the appropriate applicators, and protective gloves.

### CK-TDBV

KIT COMPONENTS

- 1 ea. Copolymer Carrying Case, with foam insert, (12.125" L x 7.25" W x 5.25" H)
- 1 ea. 1 oz. Jar Black Visible Thief Detection Powder
- 1 ea. 1 oz. Jar Red Visible Thief Detection Powder
- 1 ea. 2 oz. Jar Silver Visible Thief Detection Powder
- 1 ea. 2 oz. Jar Super-Visible Thief Detection Powder
- 1 ea. 1 oz. Jar Black Visible Thief Detection Paste
- 1 ea. 1 oz. Jar Yellow Visible Thief Detection Paste
- 1 ea. Powder Applicator Brush
- 10 ea. Cotton Applicator Swabs
- 6 ea. Wooden Applicator Spatulas
- 10 ea. Nitrile Barrier Gloves
- 1 ea. Kit Instruction Sheet



Reorder No.	Description
-------------	-------------

~œ, -f“	f “ - œ
---------	---------

## Master Visible Thief Detection Kit

Our Master Visible Thief Detection Kit is the most complete visible stain entrapment kit available. Complete with a wide selection of visible staining powders and pastes, and all the necessary applicators and brushes, this kit is ideal for industrial security and military police use.

### CK-TDMV

KIT COMPONENTS

- 1 ea. Master Carrying Case with foam insert and divider (17" L x 12" W x 7" H)
- 1 ea. 1 oz. Jar Black Visible Thief Detection Powder
- 1 ea. 1 oz. Jar Red Visible Thief Detection Powder
- 1 ea. 1 oz. Jar Yellow Visible Thief Detection Powder
- 1 ea. 1 oz. Jar Silver Visible Thief Detection Powder
- 1 ea. 1 oz. Jar Gold Visible Thief Detection Powder
- 1 ea. 1 oz. Jar Super-Visible Thief Detection Powder
- 1 ea. 1 oz. Jar Red Visible Thief Detection Paste
- 1 ea. 1 oz. Jar Green Visible Thief Detection Paste
- 1 ea. 1 oz. Jar Yellow Visible Thief Detection Paste
- 1 ea. 1 oz. Jar Black Visible Thief Detection Paste
- 1 ea. 1 oz. Jar Silver Visible Thief Detection Paste
- 1 ea. 1 oz. Jar Red Visible Multi-Stain® Detection Paste
- 1 ea. 1 oz. Jar Yellow Visible Multi-Stain® Detection Paste
- 6 ea. Powder Applicator Brushes
- 24 ea. Cotton Applicator Swabs



- 24 ea. Wooden Applicator Spatulas
- 20 ea. Nitrile Barrier Gloves
- 1 ea. Kit Instruction Sheet

Reorder No.	Description
-------------	-------------

~œ, -œ“	œ “ - œ
---------	---------



## Basic Invisible Thief Detection Kit

This economical Invisible Thief Detection Kit contains a variety of invisible thief detection powders and paste, along with other components, to help identify suspects in petty theft crimes.

### CK-TDBI

KIT COMPONENTS

- 1 ea. Copolymer Carrying Case with foam insert (16.375" L x 8.375" W x 7" H)
- 1 ea. Shirt Pocket 4 Watt Long Wave UV Lamp, w/batteries
- 1 ea. 1 oz. Jar Black Invisible Thief Detection Powder
- 1 ea. 1 oz. Jar White Invisible Thief Detection Powder
- 1 ea. 1 oz. Jar Lt. Yellow Invisible Thief Detection Powder
- 1 ea. 1 oz. Jar Silver-Gray Invisible Thief Detection Powder
- 1 ea. 1 oz. Jar Super-Invisible Thief Detection Powder
- 1 ea. 1 oz. Jar Super-Invisible Thief Detection Paste
- 1 ea. 1 oz. Jar Invisible Coin and Metal Lacquer
- 3 ea. Invisible Fluorescent Crayons



- 1 ea. Invisible Fluorescent Pen
- 5 ea. Powder Applicator Brushes
- 6 ea. Wooden Applicator Spatulas
- 6 ea. Cotton Applicator Swabs
- 10 ea. Nitrile Barrier Gloves
- 1 ea. Kit Instruction Sheet

Reorder No.	Description
-------------	-------------

~œ, -f€	f € - œ
---------	---------

## Master Invisible Thief Detection Kits

Our Master Invisible Thief Detection Kit contains a wide variety of invisible detection materials normally used by criminal investigators. Your choice of two long wave UV lamps is included, along with invisible thief detection powders and pastes, metal marking fluids, and appropriate applicators.

### CK-TDMIB & CK-TDMI

KIT COMPONENTS

- 1 ea. Master Carrying Case with foam insert and divider (17" L x 12" W x 7" H)
- 1 ea. B-14N Long Wave 4 Watt UV Lamp, w/bat OR Shirt Pocket UV Lamp
- 1 ea. 1 oz. Jar Black Invisible Thief Detection Powder
- 1 ea. 1 oz. Jar White Invisible Thief Detection Powder
- 1 ea. 1 oz. Jar Lt. Yellow Invisible Thief Detection Powder
- 1 ea. 1 oz. Jar Lt. Green Invisible Thief Detection Powder
- 1 ea. 1 oz. Jar Silver-Gray Invisible Thief Detection Powder
- 1 ea. 1 oz. Jar Pink Invisible Thief Detection Powder
- 1 ea. 1 oz. Jar Super-Invisible Thief Detection Powder
- 1 ea. 1 oz. Jar Black Invisible Thief Detection Paste
- 1 ea. 1 oz. Jar White Invisible Thief Detection Paste
- 1 ea. 1 oz. Jar Silver Invisible Thief Detection Paste
- 1 ea. 1 oz. Jar Super-Invisible Thief Detection Paste
- 1 ea. 2 oz. Jar Invisible Coin and Metal Lacquer
- 1 ea. 4 oz. Invisible Thief Detection Spray



- 1 ea. 2 oz. Jar Invisible Blue Skin Stamp Ink
- 1 ea. Uninked Stamp Pad
- 1 ea. Rubber Evidence Stamp
- 2 ea. Invisible Fluorescent Crayons
- 1 ea. Invisible Fluorescent Pen
- 6 ea. Powder Applicator Brushes
- 6 ea. Wooden Applicator Spatulas
- 12 ea. Cotton Applicator Swabs
- 10 ea. Nitrile Barrier Gloves
- 1 ea. Kit Instruction Sheet

Reorder No.	Description
-------------	-------------

~œ, -CE€f	<b>H</b> CE € - œ žf, •ž Ÿ" %œ •	shown•
~œ, -CE€	<b>H</b> CE € - œ ž' ... Ÿ" %œ	

**H** = Hazard **A** = Air-Hazard **W** = Excessive Weight **O** = Oversize • See page 282 for more shipping information.

Available from : SSPA +612 4645 7600 www.sspa.net.au

# Master Visible and Invisible Thief Detection Kit

TRITECH & K Z E A multipurpose Master Visible and Invisible Thief Detection Kit contains the necessary materials required to identify thieves. This kit is provided with a selection of both visible and invisible thief detection materials, as well as a long wave, 4 watt UV lamp.

## CK-TDMVI

^ W

1 ea. Master Carrying Case with foam insert and divider (15" L x 16" W x 8" H)

s/^ / > d d / Kœ d Z / >^W

- 1 ea. 1 oz. Jar Yellow Visible Thief Detection Powder
- 1 ea. 1 oz. Jar Silver Visible Thief Detection Powder
- 1 ea. 1 oz. Jar Super-Visible Thief Detection Powder
- 1 ea. 1 oz. Jar Red Visible Thief Detection Paste
- 1 ea. 1 oz. Jar Silver Visible Thief Detection Paste

/Es / ^ > d d / Kœ d Z / >^W

- 1 ea. Shirt Pocket Long Wave 4 Watt UV Lamp, with batteries
- 1 ea. 1 oz. Jar White Invisible Thief Detection Powder
- 1 ea. 1 oz. Jar Lt. Green Invisible Thief Detection Powder
- 1 ea. 1 oz. Jar Lt. Yellow Invisible Thief Detection Powder
- 1 ea. 1 oz. Jar Silver-Gray Invisible Thief Detection Paste
- 1 ea. 1 oz. Jar Super-Invisible Thief Detection Paste
- 1 ea. 1 oz. Jar Invisible Coin & Metal Lacquer
- 1 ea. 8 oz. Invisible Thief Detection Spray
- 1 ea. Invisible Fluorescent Crayon
- 1 ea. Invisible Fluorescent Pen

W W dK Z ^ E Y h/W D

- 4 ea. Wooden Applicator Spatulas
- 4 ea. Powder Applicator Brushes
- 20 ea. Cotton Applicator Swabs
- 20 ea. Nitrile Barrier Gloves
- 1 ea. Kit Instruction Sheet



KIT COMPONENTS

Reorder No. Description

~œ, -œ"€ H œ " € - œ