



# Protective Client Equipment

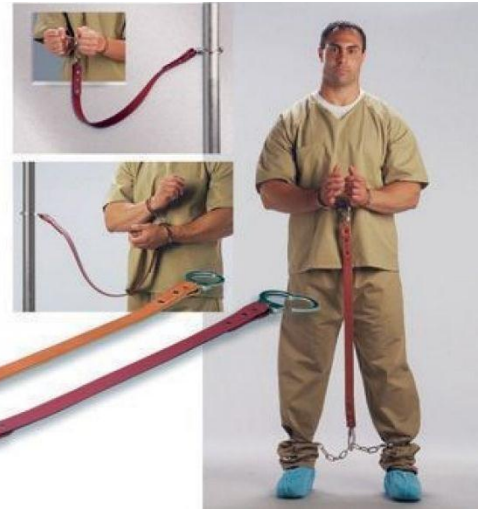
**Humane  
Restraint.**

# CATALOGUE

**NOTE:**

Product availability may vary from time to time,  
This Catalogue should only be used as a guide, we are not able to list all the products available from each manufacturer.

# Humane Restraint®



## Items available:

- No Shank products
- Stationary Restraints
- Transport Restraints
- Protective Products
- Ambulatory Restraints
- & Escort Restraints



SSPA Australia

Ph.: +612 4645 7600

E: [products@sspa.net.au](mailto:products@sspa.net.au)





# TRANSPORT SECURITY BELT



## P-MBT-480

This **MBT-480** Series belt is unique and has multiple applications. The half cuffs are located on either side of belt to allow you to keep the hands separate but restrained.

The 100% Steel D-Ring located in the front is designed to fit all models of handcuffs including hinge systems.

Alternatively it can be used to attach a 'tether' strap to the belt fastening to leg chains too.

This product can be made to any specification length.

The unique **L300** locking feature is exclusive to this product and cannot be found on any other belt in the market.

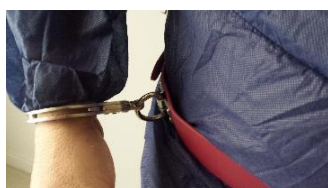
### Specifications:

Standard size (length): **28" to 48"**

Available in **Polyurethane or Leather**.

4.9mm thickness x 30mm width

Available with **standard belt buckle** or **L300 lock & Key feature**



SSPA Australia

Ph.: +612 4645 7600

The MBT-480 can be made to any specialised size.  
E: [products@sspa.net.au](mailto:products@sspa.net.au)

**Humane  
Restraint**

# Polyurethane (PU) Versus Leather

**Polyurethane (PU)** constructions, which have become increasingly popular for their durable soft hand, elegant drape, luxurious feel, and environmentally preferred composition in place of traditional leathers.

**Polyurethane (PU)** delivers the most realistic faux leather designs with respect to hand, feel, and looks and lend themselves to a wide range of finishes and effects. They also provide excellent abrasion resistance.

The way that **Polyurethane (PU)** fabrics elegantly fold and drape, their lightweight composition, and their ease of stitching make them very easy to work with and expand design possibilities in exciting ways.

**Polyurethane (PU)** fabrics are very easy to clean and can withstand disinfection with a variety of hospital-grade disinfectants.

**Polyurethane (PU)** design introduced with an extremely soft construction and robust performance, making it ideal for many demanding environments including healthcare, custodial, hospitality, and commercial environment.

**Polyurethane (PU)** is formulated without PVC and to comply with ROHS (2002/95) and E.U. REACH (10 June 2014). Additionally, PU complies with Section 108: Phthalates of the Consumer Product Safety Improvement ACT (CPSIA).

**Remember- Leather made products can and do absorb blood and body fluids and become contaminated with no actual method or practise of cleaning the leather article. Therefore instant disposal of the leather article is encouraged, and there should be no attempts to clean the infected article.**

*Reference: BLOODBORNE PATHOGENS IN THE WORKPLACE FOR FIRST RESPONDERS, BTR TECHNICAL TRAINING (OPTIONAL) REFERENCES: EMERGENCY CARE, EIGHTH EDITION, BRADY OSHA REGULATION 29 CFR 1910.1030 PREVENTING DISEASE TRANSMISSION, AMERICAN RED CROSS*

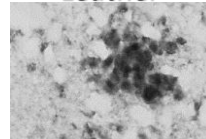
Since The Brady OSHA Regulation 29 CFR1910:1030 Report as many as 57% US agencies across the country have transitioned from their traditional leather articles to either synthetic textiles including Polyurethane (PU).

## Polyurethane (PU) Versus Leather- Cleaning advantages

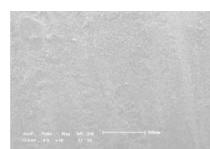
Cleaning Principle	Leather	Polyurethane (PU)
Microfiber cloth	N	Y
Soap	N	Y
Warm water	N	Y
Mild Detergent	N	Y
Non-abrasive Sponge	N	Y
Alcohol-based cleaner	N	Y
Lint free towel	N	Y
Dry cleaning	N	Y
Air dry cleaning	N	Y

[http://www.innovationsusa.com/docs/careMaint/C\\_M-Faux\\_Leather.pdf](http://www.innovationsusa.com/docs/careMaint/C_M-Faux_Leather.pdf)

Leather



PU



OSHA



Bloodborne Pathogens

Both sections were cleaned with high grade disinfectant and alcohol based cleaning products for a duration of 10 mins. The leather still contains evidence of micro-organisms common to virus and bacteria strands.



# SLIM LINE TRANSPORT & ESCORT RESTRAINT BELT

All products are made to special orders and with various accessories.

Check with our staff for further information.

Call (02) 4645 7600 or email to [products@sspa.net.au](mailto:products@sspa.net.au)

**SSPA**

## TRANSPORT BELTS

### With D-Ring



Eliminate injuries caused by handcuffing behind the back by using these convenient transport belts. Our transport belts are available in heavy-duty leather, compact nylon, or easy care polyurethane. The steel made-to-specs D-ring available on all models is designed to fit virtually all models of handcuffs, including hinged. Half cuff available on the belts is a Smith and Wesson 100 model for safer application and removal. Products will fit juvenile to adult populations. Belts maintain wrists to torso for safer transport.

### With Half Handcuff



### LEATHER NON-LOCKING TRANSPORT BELT

BT-48 or CBT-480—The most basic and time-tested belt on the market. Heavy duty leather belt with roller buckle is 1 1/2" wide and easy to apply.

With D-Ring

BT-48

With Half Cuff

CBT-480

### NYLON TRANSPORT BELT WITH SIDE RELEASE BUCKLE

NT-48 or CNT-480—The lightweight material and ease of cleaning make this belt a low-cost necessity for anyone using handcuffs. It has an extra keeper for security and is available in multiple colors for coding.

With D-Ring

NT-48

With Half Cuff

CNT-480

### NYLON TRANSPORT BELT WITH HOOK AND LOOP CLOSURE

HL-48 or CHL-480—Quick hook and loop double closure provides the fast application and removal you are looking for. It is also very easy to clean and available in a variety of colors for coding.

With D-Ring

HL-48

With Half Cuff

CHL-480



This is the unique L300 LOCKING DEVICE, which eliminates the use of a commercially available padlock thus increasing the security and integrity of the Transport & Escort Belt restraint compared to the current devices used by agencies.