

Latent Print Collection



- 113 Latent Print Powders
- 118 Latent Print Powder Applicators & Remover
- 125 Print Lifters - Hinged
- 133 Print Lifters - Tape & Backing Cards
- 138 Latent Print Developers and Supplies - Chemicals
- 141 Latent Print Developers and Supplies - Cyanoacrylate
- 146 Fuming Chambers & Downflow Workstations
- 149 Latent Print Kits
- 160 Kit Cases



Our latent print collection products are used for collecting and processing latent prints at a crime scene or in the laboratory. Our various products range from Atomic CRP latent print powder to laboratory fuming chambers.

Available from : **SSPA** +612 4645 7600 www.sspa.net.au

LATENT PRINT POWDERS



Atomic CRP Latent Print Powder - Standard Powder

These are the best powders you will ever use! Because we manufacture each one in-house, TRITECHFORENSICS has been able to incorporate various refinements into our series of Atomic CRP Powders to assure our customers receive latent powders that are extra “smooth,” noncaking, and moisture free.

Our Atomic CRP Powders are extremely sensitive to secretions and provide superior adherence characteristics.

We manufacture and package each powder under the highest quality control standards in an environmentally controlled setting. We have also incorporated several innovative and efficient manufacturing procedures resulting in reduced prices for our customers.

We offer a wide selection of powder colors to contrast with any color surface where a print is found. To accommodate agencies of every size, we provide our Standard Atomic CRP Latent Print Powders in containers that range from 2 oz. up to 128 oz.



Description	2 oz.(59 ml.) Re. No.	4 oz.(118 ml.) Re. No.	8 oz.(237 ml.) Re. No.	16 oz.(473 ml.) Re. No.
Velvet Black	LP-VB-2	LP-VB-4	LP-VB-8	LP-VB-16
Ash Gray	LP-AG-2	LP-AG-4	LP-AG-8	LP-AG-16
Pure White	LP-PW-2	LP-PW-4	LP-PW-8	LP-PW-16
Bright Red	LP-BR-2	LP-BR-4	LP-BR-8	LP-BR-16
Silver Metallic H	LP-SM-2	LP-SM-4	LP-SM-8	LP-SM-16
Gold Metallic	LP-GM-2	LP-GM-4	LP-GM-8	LP-GM-16
Copper Metallic	LP-CM-2	LP-CM-4	LP-CM-8	LP-CM-16
Pink	LP-P-2	LP-P-4	LP-P-8	LP-P-16

Description	32 oz.(946 ml.) Re. No.	64 oz.(1893 ml.) Re. No.	128 oz. - 1 gallon (3785 ml.) Re. No.
Velvet Black	LP-VB-32	LP-VB-64	LP-VB-128
Ash Gray	LP-AG-32	LP-AG-64	LP-AG-128
Pure White	LP-PW-32	LP-PW-64	LP-PW-128
Bright Red	LP-BR-32	LP-BR-64	LP-BR-128
Silver Metallic H	LP-SM-32	LP-SM-64	LP-SM-128
Gold Metallic	LP-GM-32	LP-GM-64	LP-GM-128
Copper Metallic	LP-CM-32	LP-CM-64	LP-CM-128
Pink	LP-P-32	LP-P-64	LP-P-128



Atomic CRP Latent Print Powders - Triple A



Triple A Powders contain an exclusive base ingredient to make these powders extra "smooth" and can be used on practically any surface. Our Triple A Powders are specifically formulated for use on old prints but can also be used on fresh prints as well.

Description	2 oz.(59 ml.) Re. No.	16 oz.(473 ml.) Re. No.	32 oz.(946 ml.) Re. No.
Jet Black	LPTA-JB-2	LPTA-JB-16	LPTA-JB-32
Sky Gray	LPTA-SG-2	LPTA-SG-16	LPTA-SG-32
All White	LPTA-AW-2	LPTA-AW-16	LPTA-AW-32
Brilliant Silver	LPTA-BS-2	LPTA-BS-16	LPTA-BS-32

Atomic CRP Latent Print Powder - Heavy

Our Heavy Atomic CRP Latent Print Powders are provided for technicians who prefer a latent powder with denser weight properties than standard powder but with all the same superior contrast and photographic qualities you expect from the Atomic brand.



Description	2 oz.(59 ml.) Re. No.	8 oz.(237 ml.) Re. No.	16 oz.(473 ml.) Re. No.
Black	LPH-B-2	LPH-B-8	LPH-B-16
Gray	LPH-G-2	LPH-G-8	LPH-G-16
Silver/Black	LPH-SB-2	LPH-SB-8	LPH-SB-16



Atomic CRP Latent Print Powder - Safe-Cracker

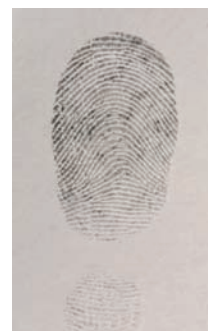
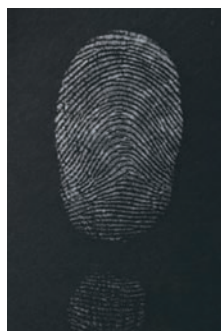
This metallic red-colored latent print powder is specifically developed just for use on metal surfaces such as safes, file cabinets, vaults, coin boxes, etc.

Description	2 oz.(59 ml.) Re. No.	16 oz.(473 ml.) Re. No.
Safe-Cracker	LPSC-R-2	LPSC-R-16

Atomic CRP Latent Print Powder - Dual Purpose



Our Dual Purpose (bi-chromatic) powder has the same characteristics as our standard powder; however, it will appear on dark-colored surfaces and on light-colored surfaces.



Description	2 oz.(59 ml.) Re. No.	8 oz.(237 ml.) Re. No.	16 oz.(473 ml.) Re. No.
Silver/Black	LP-SB-2	LP-SB-8	LP-SB-16
Silver/Gray	LP-SG-2	LP-SG-8	LP-SG-16
Silver/Red	LP-SR-2	LP-SR-8	LP-SR-16

TIP

All CRP Latent Powders are packaged by volume. The net weight of the contents varies according to the color and composition.

Atomic CRP Latent Print Powder - Fluorescent

Our Fluorescent Powders are recognized throughout the world for their superior fluorescent colors when illuminated by a long or short wave UV lamp and can be used on virtually any multicolor surface.



TIP

Our Forensic Light Sources section allows our customers to determine which lights best suit the needs of their agencies. Please see pages 196-210 for more information.

Description	2 oz.(59 ml.) Re. No.	16 oz.(473 ml.) Re. No.
Orange, fluoresces brilliant orange	LPF-O-2	LPF-O-16
Black, fluoresces brilliant green	LPF-BG-2	LPF-BG-16
Green, fluoresces brilliant green	LPF-G-2	LPF-G-16
Red, fluoresces brilliant red	LPF-R-2	LPF-R-16
White, fluoresces brilliant green	LPF-WG-2	LPF-WG-16
Yellow, fluoresces brilliant yellow	LPF-Y-2	LPF-Y-16

Atomic CRP Latent Print Powder - Magnetic



Our Magnetic Atomic CRP Latent Print Powders are available in a wide selection of colors and are the highest quality magnetic powders available due to their high iron dust content. They are manufactured at our headquarters by skilled technicians, allowing us to maintain strict control over the process.

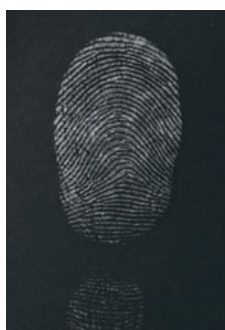
These Atomic CRP Magnetic Powders are used for developing prints on difficult nonferrous surfaces, such as slick or coarse paper, polished or unfinished wood surfaces, glass, leather, and vinyl.



Description	1 oz.(30 ml.) Re. No.	16 oz.(473 ml.) Re. No.	128 oz. - 1 gallon (3785 ml.) Re. No.
Regular Black	LPM-RB-1	LPM-RB-16	LPM-RB-128
Midnight Black	LPM-MB-1	LPM-MB-16	LPM-MB-128
White	LPM-W-1	LPM-W-16	LPM-W-128
Gray	LPM-G-1	LPM-G-16	LPM-G-128
Red	LPM-R-1	LPM-R-16	LPM-R-128
Silver	LPM-S-1	LPM-S-16	LPM-S-128

Atomic CRP Latent Print Powder - Magnetic Dual Purpose

Our Magnetic Dual Purpose (bi-chromatic) Atomic CRP Latent Print Powder contains the same quality and guarantee of high iron dust content used in our other magnetic powders. It will appear silver on dark-colored surfaces and black on light-colored surfaces.



Description	1 oz.(30 ml.) Re. No.	16 oz.(473 ml.) Re. No.	128 oz. - 1 gallon (3785 ml.) Re. No.
Silver/Black Magnetic	LPM-SB-1	LPM-SB-16	LPM-SB-128

Atomic CRP Latent Print Powder - Fluorescent Magnetic



Our Fluorescent Magnetic Atomic CRP Latent Print Powders are available in five different colors. Our black and white, when illuminated by a long or short wave UV lamp, will fluoresce a bright green. Our orange, red, and yellow fluoresce in their natural colors. Fluorescent powders greatly enhance ridge details, no matter what the surface color may be.

Description	1 oz.(30 ml.) Re. No.	16 oz.(473 ml.) Re. No.
Black, fluoresces brilliant green	LPFM-BG-1	LPFM-BG-16
White, fluoresces brilliant green	LPFM-WG-1	LPFM-WG-16
Orange, fluoresces brilliant orange	LPFM-O-1	LPFM-O-16
Red, fluoresces brilliant red	LPFM-R-1	LPFM-R-16
Yellow, fluoresces brilliant yellow	LPFM-Y-1	LPFM-Y-16
Green, fluoresces brilliant green	LPFM-G-1	LPFM-G-16

TIP

All CRP Latent Powders are packaged by volume. The net weight of the contents varies according to the color and composition.

Choosing Latent Print Powders

When choosing a powder, the user must consider two factors: the color and type of powder.

Powder Color:

- It is very important that you chose a powder color that contrasts the item you will be collecting prints from.
- The more contrast between the two, the clearer the lifted print will be.

Type of Powder:

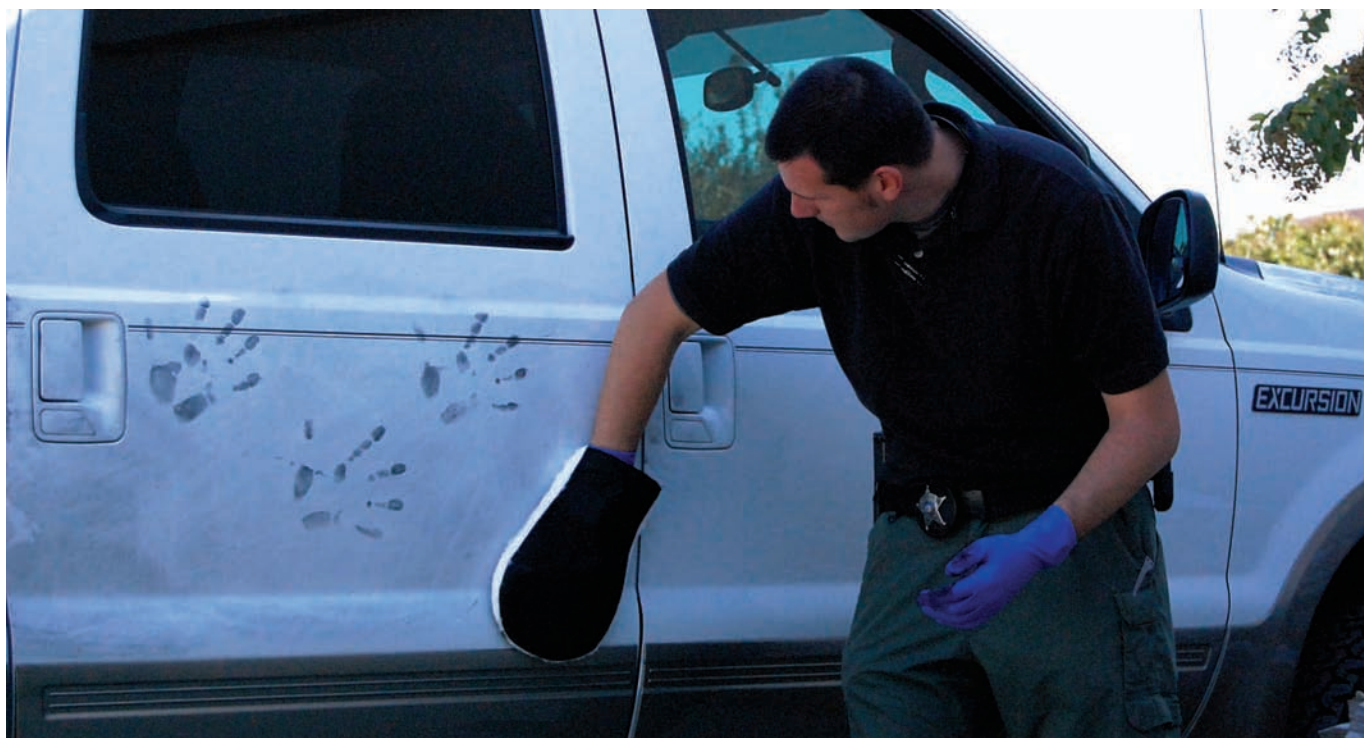
- When choosing a type of powder, you must consider what kind of surface you will be collecting the latent prints from.
- Regular powders** are best used on painted or smooth surfaces such as windows, televisions, kitchen counter tops, table tops, painted surfaces, cabinets, or vehicles.
- Metallic powders** are best used on highly polished surfaces such as items made of aluminum, brass, copper, or chrome.
- Magnetic powders** are best used on plastics, textured, or shiny surfaces such as slick or coarse paper, polished or unfinished wood surfaces, glass, leather, or vinyl surfaces.
- Dual-Purpose powders** contain both the properties of regular and metallic powders and can also be used on light or dark surfaces.
- Fluorescent powders** are best used on multi-color surfaces and come in both regular and magnetic forms. The use of a Forensic Light Source (see pages 196-210) greatly improves visualization and photography of the latent prints.



LATENT PRINT POWDER APPLICATORS & REMOVER


NEW ITEM

Latent Print Powder Applicator Mitt - Swift-Lift



WHAT USED TO TAKE HOURS NOW TAKES SECONDS!

QUICK AND EASY APPLICATION

The patent-pending Swift-Lift Mitt is the latest breakthrough in latent print recovery. Its ergonomic design allows the investigating officer to dust a large area for latent prints in seconds rather than hours.

ECONOMICAL

Utilizing Swift-Lift, an investigating officer can dust the entire exterior of a car in under 90 seconds. Traditional brush methods can take upwards of 2 hours. With such labor savings, the Swift-Lift is the most cost effective way to recover latent prints over large surface areas.

SUPERIOR RESULTS

Swift-Lift's soft and supple design will not damage ridge detail of the latent print and, when used with our Atomic CRP powders, provides amazing adherence properties to the oils in latent prints. The Swift-Lift is designed to be disposable so that DNA from one crime scene is not inadvertently transferred to another.

See a video demonstration on our website,
tritechforensics.com.



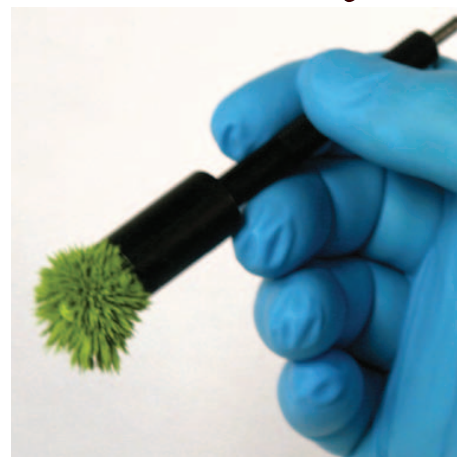
Reorder No.	Description
SL-MITT	Swift-Lift Latent Print Powder Applicator - 10/pkg

Available from : **SSPA +612 4645 7600** www.sspa.net.au

Latent Print Powder Magnetic Wand - Retractable

A superior applicator for any magnetic print powder. Recommended for use in conjunction with magnetic powders when dusting on paper, wood, leather, plastic, and other nonferrous surfaces. Complete with protective tube.

Reorder No.	Description
APP-MAG1	Retractable Magnetic Powder Wand



Latent Print Powder Magnetic Wand - Retractable Pocket



Recommended for use in conjunction with magnetic powders when searching for latent prints on paper, tissue, unfinished wood, etc. Complete with pocket clip and protective tube.

Reorder No.	Description
APP-MAG2	Retractable Pocket Magnetic Powder Wand

Latent Print Powder Magnetic Wand - TEX Magnetic Wand System

Criminal identification through DNA testing has become an essential tool for the criminal justice system. Despite proven advancements in the collection and analysis of DNA, the reliability of DNA samples is being challenged on a regular basis. In order to overcome these challenges, crime scene investigators must be careful not to allow contaminants from one collection site to move to the next site.

How can this be accomplished? The answer is the TEX Magnetic Wand System. Consisting of a lightweight magnetic stem and a disposable cover, the patented TEX Magnetic Wand System keeps the magnetic stem free from contaminants, giving you the assurance that no impurities will be unknowingly transported from one location to another.



Reorder No.	Description
APP-TEX-1	TEX Magnetic Wand System - 1 Stem & 1 Cover
APP-TEX-3	TEX Magnetic Wand System - 1 Stem & 3 Covers
APP-TEX-5	TEX Magnetic Wand System - 1 Stem & 5 Covers
APP-TEX-C10	Cover Pack - 0 Stems & 10 Covers
APP-TEX-C25	Cover Pack - 0 Stems & 25 Covers

THE TEX MAGNETIC WAND SYSTEM

AVOID CROSS CONTAMINATION OF CRIME SCENES

Criminal identification through DNA testing has become an essential tool for the criminal justice system. Despite proven advancements in the collection and analysis of DNA, the reliability of DNA samples is being challenged on a regular basis. In order to overcome these challenges, **crime scene investigators must be careful not to allow contaminants from one collection site to move to the next site.** How can this be accomplished? The answer is the TEX Magnetic Wand System. Consisting of a lightweight magnetic stem and a disposable cover, the patented TEX Magnetic Wand System keeps the magnetic stem free from contaminants, giving you the assurance that no impurities will be unknowingly transported from one location to another.



LIGHTWEIGHT MAGNETIC STEM

- never comes in contact with evidence, preventing any cross contamination of crime scenes
- provides precise placement of magnetic powder on areas where suspected prints are located

SUPERIOR MAGNET STRENGTH

- picks up enough powder to do the job
- so strong, the wand can be used horizontally without loss of powder
- stays protected within the cover

DISPOSABLE COVER

- slides on easily and stays on until dusting is complete
- inexpensive way to protect your wand, your evidence, and your crime scene

ROUNDED HEAD

- designed to help you follow the contours of latent prints
- prevents scratching and damaging evidence
- less drag at tip equates to a better print

EXPERT DEVELOPMENT

The TEX Magnetic Wand System was designed by a retired Crime Scene Investigator who saw a need for a wand that would eliminate cross contamination of DNA at crime scenes. Years of experience enabled him to design the wand for ease of use as well as efficiency and accuracy. Successful results, once reserved for fingerprint specialists, are now available to officers at any level of experience.

SIMPLE AND EFFECTIVE

Using the TEX Magnetic Wand System is easy. Simply slide a disposable cover over the magnetic stem and insert the tip into any magnetic powder. The specially calibrated magnet pulls enough powder onto the rounded head of the cover to dust for prints while at the same time preventing extra powder from falling onto your print area or hands. After the area has been dusted, dispose of the cover and any excess powder, keeping the magnetic stem free from contaminants. Your TEX is now ready for the next crime scene.

ECONOMICAL

With several options available, the TEX Magnetic Wand System costs under \$1 per use. No other magnetic wand can claim to be both inexpensive and contaminant-free.

(U.S. Patent No. 6,186,688)

Latent Print Powder Feather Dusters

These print dusters are made of the highest quality marabou feathers available. They are recommended for use on wide areas such as counters, walls, doors, etc. Measurements: Length of feathers: 5"; Overall length: 9"



Reorder No.	Description
BR-FD-B	Latent Print Powder Feather Duster - Black
BR-FD-R	Latent Print Powder Feather Duster - Red
BR-FD-W	Latent Print Powder Feather Duster - White

Latent Print Powder Sifting Jars



Think of these powder sifters as salt shakers. Simply add whatever powder you prefer (not recommended for magnetic powders), then sprinkle the powder onto a clean sheet of paper.

This shaker is an ideal companion to the new Swift-Lift Latent Print Powder Applicator. Simply fill jar with any non-magnetic Atomic CRP powders, sprinkle onto mitt, and dust for prints.

Reorder No.	Description
JAR2SIF	Polystyrene Sifting Jar - 2 oz.
JAR4SIF	Polystyrene Sifting Jar - 4 oz.

Latent Print Powder Mister

This product has two applications: first, it will blow latent powder onto an area to develop a print and, second, it will blow off excess powder from a developed print before actually lifting the print.

When used for developing a print, simply remove the aluminum cap and pour a small amount of latent powder into the cap. After reinserting the cap into the rubber bulb, squeeze the bulb to blow the powder on the suspected area to develop the print.

If used as a tool for removing excess powder from a developed print, simply squeeze the bulb and blow away any excess powder. Not recommended for magnetic powders.



Reorder No.	Description
SPR-BULB	Latent Print Powder Mister

**NEW ITEM**

Latent Print Powder Brush - Carbon Fiber



Our Carbon Fiber Latent Print Brush features ultra-soft carbon filaments, providing users with a smooth, low-friction application.

The carbon filaments are moisture resistant and can be used in extreme humidity.

Measurements: Length overall: 7"

Carbon filament length: 2.25"

Reorder No.	Description
BR-CF-B	Latent Print Powder Brush - Carbon Fiber

Latent Print Powder Brushes - Whisper™ Fiberglass



Our Whisper™ Brushes are the finest fiberglass latent print powder brushes available anywhere.

Both the 7.5" long and 6" long Whisper™ Brushes contain thousands of ultra fine and ultra soft fiberglass filaments which pick up and hold fingerprint powder. The filaments are permanently affixed to the brush handle and do not fall out.

FEATURES

- Filament length - 2"
- Handle length - 5.5" long for the 7.5" brush, 4" long for the 6" brush
- Lightweight - 0.7 oz. for the 7.5" brush, 0.5 oz. for the 6" brush
- Excellent balance
- Fine Quality - Made of thousands of ultra fine and ultra soft fiberglass filaments
- Always Soft - The tip of the fiberglass filaments becomes even softer with use
- Protective Tube - Includes a clear plastic tube to protect the fiberglass filaments when the brush is not in use

Reorder No.	Description
BR-FG6W	Whisper™ Fiberglass Latent Print Powder Brush - 6" long
BR-FG8W	Whisper™ Fiberglass Latent Print Powder Brush - 7.5" long

Latent Print Powder Brushes - Natural Hair

Natural hair brushes are the most commonly used brushes for developing latent prints. We offer a wide variety of lengths, shapes, and types of soft, high quality natural hair brushes.

Each brush is packaged in a clear plastic tube with a cap to prevent damage to the hairs when not in use. Our wooden brush handles are painted with a high gloss black enamel for easy cleaning.



Brush	Material	Bottom Cut	Approximate Overall Length	Approximate Hair Length	Approximate Diameter
(A)	Black Goat Hair	Flat	9.5"	2"	1.5"
(B)	Black Goat Hair	Flat	7"	1.875"	1"
(C)	Pony Hair	Flat	7"	2.125"	.75"
(D)	Black Goat Hair	Flat	7"	2"	1.25"
(E)	Kazan Squirrel Hair	Rounded	6.375"	1.25"	.625"
(F)	Black Squirrel Hair	Rounded	6.75"	1.75"	1"
(G)	Black Goat Hair	Flat	6.5"	.75"	.75"
(H)	Camel Hair	Flat	4.5"	1.5"	1"
(I)	Camel Hair	Flat	6"	1.5"	1"

Reorder No.	Description
BR-G-2-9	(A) Black Goat Hair Latent Print Brush
BR-G-1.875	(B) Black Goat Hair Latent Print Brush
BR-P-2.125	(C) Pony Hair Latent Print Brush
BR-G-2-7	(D) Black Goat Hair Latent Print Brush
BR-S-1.25	(E) Kazan Squirrel Hair Latent Print Brush
BR-S-1.75	(F) Black Squirrel Hair Latent Print Brush
BR-G-1.188	(G) Black Goat Hair Latent Print Brush
BR-C-1.5	(H) Camel Hair Latent Print Brush
BR-C-1.5(6)	(I) Camel Hair Latent Print Brush



NEW ITEM

Disposable Fiberglass Latent Print Powder Brush



Cross contamination at a crime scene is a growing concern for Crime Scene Investigators. One way cross contamination happens is through the transfer of DNA from a using a latent print brush in several

locations. To help prevent cross contamination TRITECHFORENSICS is proud to introduce our sterile, disposable, fiberglass latent print brush. This brush is one of the finest one-time use brushes available, and it rivals the quality of many multi-use brushes. Our brush is made with thousands of ultra-soft fiberglass filaments. The wood handle offers exceptional balance and feel. Each brush comes sealed in a plastic tube so that the brush is completely free of DNA or contaminants.

Reorder No.	Description
-------------	-------------

BR-FG-D	Disposable Fiberglass Latent Print Powder Brush
---------	---

TIP

Please see pages 113 - 117 to view our selection of Atomic Latent Print Powders. We offer a wide variety of powders in many colors. With so many to chose from, you are sure to find the perfect powder to fit your needs.

Powder-B-Gone Latent Print Powder Remover

Our latent print powder remover, Powder-B-Gone, contains a fast-acting formula which quickly and thoroughly removes latent print powder from all nonporous surfaces.

Simply spray Powder-B-Gone on the latent print powder and wipe it off with a damp paper towel or cloth.

Powder-B-Gone contains no abrasives and will not scratch or damage hard surfaces. It is supplied in a 16 oz. pump action spray bottle.



Reorder No.	Description
-------------	-------------

LC-PBG-16	Powder-B-Gone Latent Print Powder Remover
-----------	---

PRINT LIFTERS - HINGED

Hinged Print Lifters - 1.5" x 2"



Our 1.5" x 2" Hinged Lifters are made from .005" thick, crystal clear, adhesive-backed mylar that is hinged to .01" thick vinyl backing cards. The backing cards are available in white, black, or transparent. Pertinent information pertaining to the print can be recorded on the reverse side of the lifter. After developing the print, simply peel off the inside release liner to expose the adhesive, "lift" the print, then close the mylar against the vinyl backing card to permanently secure it.



Reorder No.	Description
-------------	-------------

LFT-W-1.5X2	Hinged Print Lifters - 1.5" x 2", 24/box, White
LFT-B-1.5X2	Hinged Print Lifters - 1.5" x 2", 24/box, Black
LFT-T-1.5X2	Hinged Print Lifters - 1.5" x 2", 24/box, Transparent

Hinged Print Lifters - 2" x 4"

Our 2" x 4" Hinged Lifters are made from .005" thick, crystal clear, adhesive-backed mylar that is hinged to .01" thick vinyl backing cards. The backing cards are available in white, black, or transparent. Pertinent information pertaining to the print can be recorded on the reverse side of the lifter. After developing the print, simply peel off the inside release liner to expose the adhesive, "lift" the print, then close the mylar against the vinyl backing card to permanently secure it.



Reorder No.	Description
-------------	-------------

LFT-W-2X4	Hinged Print Lifters - 2" x 4", 12/box, White
LFT-B-2X4	Hinged Print Lifters - 2" x 4", 12/box, Black
LFT-T-2X4	Hinged Print Lifters - 2" x 4", 12/box, Transparent



Hinged Print Lifters - 4" x 4"



Our 4" x 4" Hinged Lifters are made from .005" thick, crystal clear, adhesive-backed mylar that is hinged to .01" thick vinyl backing cards. The backing cards are available in white, black, or transparent. Pertinent information pertaining to the print can be recorded on the reverse side of the lifter. After developing the print, simply peel off the inside release liner to expose the adhesive, "lift" the print, then close the mylar against the vinyl backing card to permanently secure it.



Reorder No.	Description
-------------	-------------

LFT-W-4X4	Hinged Print Lifters - 4" x 4", 24/box, White
LFT-B-4X4	Hinged Print Lifters - 4" x 4", 24/box, Black
LFT-T-4X4	Hinged Print Lifters - 4" x 4", 24/box, Transparent

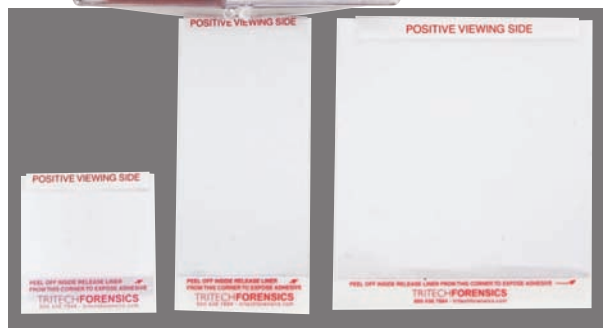
Hinged Print Lifter Kit - Basic - Single Color, Multi Size



The single color TRITECHFORENSICS Hinged Print Lifter Kit consists of a 4.75" L x 4.75" W x 1 .375" H plastic box containing 48 lifters with either white, black, or transparent backing cards.

The covers are made from .005" thick, crystal clear, adhesive-backed mylar that is hinged to .01" thick vinyl backing cards.

After developing the print, simply peel off the inside release liner to expose the adhesive, "lift" the print, then close the mylar against the vinyl backing card to permanently secure it.



KIT COMPONENTS

Each Kit Contains:

- 24 ea. 1.5" x 2" Hinged Print Lifters
- 12 ea. 2" x 4" Hinged Print Lifters
- 12 ea. 4" x 4" Hinged Print Lifters

Reorder No.	Description
LFT-W-48	Hinged Print Lifter Kit - White (shown)
LFT-B-48	Hinged Print Lifter Kit - Black
LFT-T-48	Hinged Print Lifter Kit - Transparent

TIP

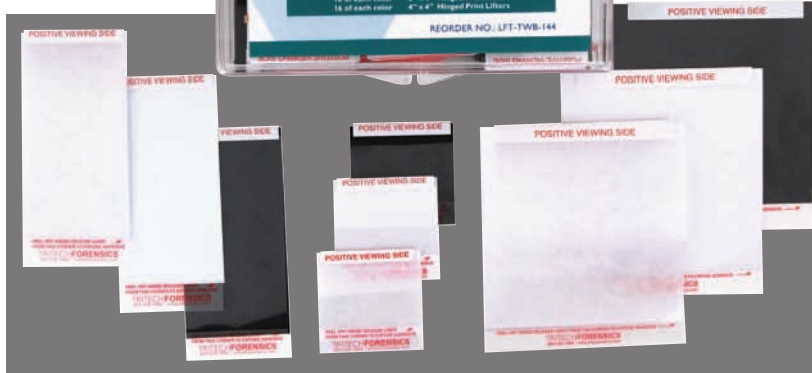
Please see our Magnifiers Section on pages 190 - 195.

Hinged Print Lifter Kit - Deluxe - Multi Color, Multi Size

The Deluxe Hinged Print Lifter Kit consists of a 7" L x 5" W x 1 .875" H plastic box containing 144 lifters of various sizes and backing card colors.

The covers are made from .005" thick, crystal clear, adhesive-backed mylar that is hinged to .01" thick vinyl backing cards. Pertinent information pertaining to the print can be recorded on the reverse side of the lifter.

After developing the print, simply peel off the inside release liner to expose the adhesive, lift the print, then close the mylar against the vinyl backing card to permanently secure it.



KIT COMPONENTS

Each Kit Contains:

- 16 ea. 1.5" x 2" Hinged Print Lifters, white, black, and transparent
- 16 ea. 2" x 4" Hinged Print Lifters, white, black, and transparent
- 16 ea. 4" x 4" Hinged Print Lifters, white, black, and transparent

Reorder No.	Description
LFT-TWB-144	Deluxe Hinged Print Lifter Kit

Scaled Hinged Print Lifters - 1.5" x 2"



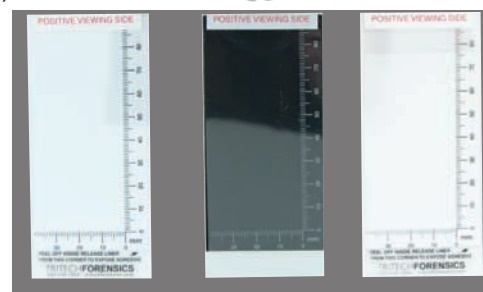
Our 1.5" x 2" Scaled Hinged Lifters are made from .005" thick, crystal clear, adhesive-backed mylar that is hinged to .01" thick vinyl backing cards. The backing cards are available in white, black, or transparent. Pertinent information pertaining to the print can be recorded on the reverse side of the lifter. The 1.5" x 2" Scaled Hinged Lifter has a scale along the bottom and right sides measuring 40 mm. x 23 mm. After developing the print, simply peel off the inside release liner to expose the adhesive, "lift" the print, then close the mylar against the vinyl backing card to permanently secure it.



Reorder No.	Description
LFT-W-1.5X2(S)	Scaled Hinged Print Lifters - 1.5" x 2", 24/box, White
LFT-B-1.5X2(S)	Scaled Hinged Print Lifters - 1.5" x 2", 24/box, Black
LFT-T-1.5X2(S)	Scaled Hinged Print Lifters - 1.5" x 2", 24/box, Transparent

Scaled Hinged Print Lifters - 2" x 4"

Our 2" x 4" Scaled Hinged Lifters are made from .005" thick, crystal clear, adhesive-backed mylar that is hinged to .01" thick vinyl backing cards. The backing cards are available in white, black, or transparent. Pertinent information pertaining to the print can be recorded on the reverse side of the lifter. The 2" x 4" Scaled Hinged Lifters have scales along the bottom and right sides measuring 40 mm. x 86 mm. After developing the print, simply peel off the inside release liner to expose the adhesive, "lift" the print, then close the mylar against the vinyl backing card to permanently secure it.

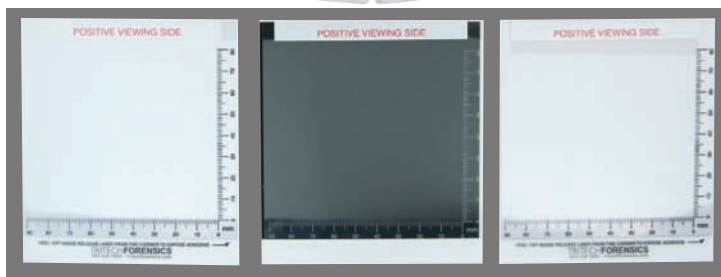


Reorder No.	Description
LFT-W-2X4(S)	Scaled Hinged Print Lifters - 2" x 4", 12/box, White
LFT-B-2X4(S)	Scaled Hinged Print Lifters - 2" x 4", 12/box, Black
LFT-T-2X4(S)	Scaled Hinged Print Lifters - 2" x 4", 12/box, Transparent

Scaled Hinged Print Lifters - 4" x 4"



Our 4" x 4" Scaled Hinged Lifters are made from .005" thick, crystal clear, adhesive-backed mylar that is hinged to .01" thick vinyl backing cards. The backing cards are available in white, black, or transparent. Pertinent information pertaining to the print can be recorded on the reverse side of the lifter. The 4" x 4" Scaled Hinged Lifter has a scale along the bottom and right sides measuring 90 mm. x 80 mm. After developing the print, simply peel off the inside release liner to expose the adhesive, "lift" the print, then close the mylar against the vinyl backing card to permanently secure it.



Reorder No.	Description
LFT-W-4X4(S)	Scaled Hinged Print Lifters - 4" x 4", 24/box, White
LFT-B-4X4(S)	Scaled Hinged Print Lifters - 4" x 4", 24/box, Black
LFT-T-4X4(S)	Scaled Hinged Print Lifters - 4" x 4", 24/box, Transparent

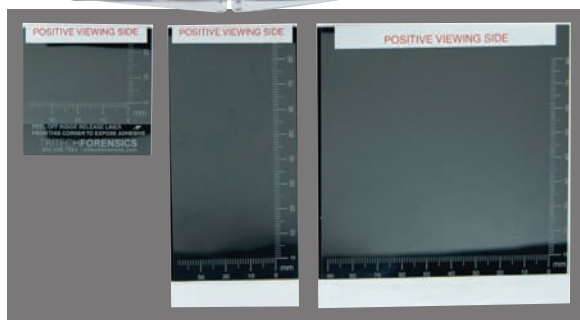
Scaled Hinged Print Lifter Kit - Basic - Single Color, Multi Size



The single color TRITECHFORENSICS Scaled Hinged Print Lifter Kit consists of a 4.75" L x 4.75" W x 1 .375" H plastic box containing 48 lifters with either white, black, or transparent backing cards.

The covers are made from .005" thick, crystal clear, adhesive-backed mylar that is hinged to .01" thick vinyl backing cards. Pertinent information pertaining to the print can be recorded on the reverse side of the lifter. The 1.5" x 2" Scaled Hinged Lifter has a scale along the bottom and right sides measuring 40 mm. x 23 mm.

After developing the print, simply peel off the inside release liner to expose the adhesive, "lift" the print, then close the mylar against the vinyl backing card to permanently secure it.



KIT COMPONENTS

Each Kit Contains:

- 24 ea. 1.5" x 2" Scaled Hinged Print Lifters
- 12 ea. 2" x 4" Scaled Hinged Print Lifters
- 12 ea. 4" x 4" Scaled Hinged Print Lifters

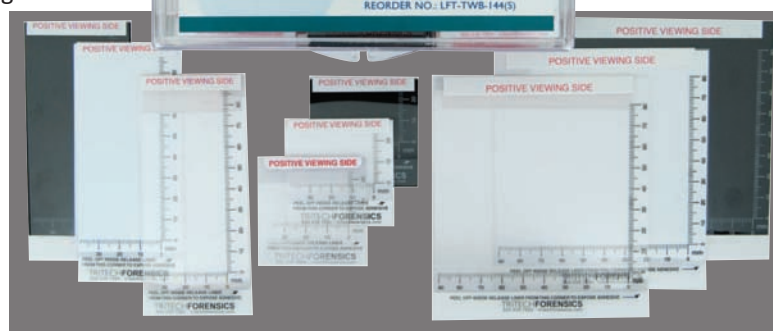
Reorder No.	Description
LFT-W-48(S)	Scaled Hinged Print Lifter Kit - White
LFT-B-48(S)	Scaled Hinged Print Lifter Kit - Black (shown)
LFT-T-48(S)	Scaled Hinged Print Lifter Kit - Transparent

Scaled Hinged Print Lifter Kit - Deluxe - Multi Color, Multi Size

The Deluxe Scaled Hinged Print Lifter Kit consists of a 7" L x 5" W x 1 .875" H plastic box containing 144 lifters of various sizes and backing card colors.

The covers are made from .005" thick, crystal clear, adhesive-backed mylar that is hinged to .01" thick vinyl backing cards. Pertinent information pertaining to the print can be recorded on the reverse side of the lifter. The 1.5" x 2" Scaled Hinged Lifter has a scale along the bottom and right sides measuring 40 mm. x 23 mm.

After developing the print, simply peel off the inside release liner to expose the adhesive, "lift" the print, then close the mylar against the vinyl backing card to permanently secure it.



KIT COMPONENTS

Each Kit Contains:

- 16 ea. 1.5" x 2" Scaled Hinged Print Lifters, white, black, and transparent
- 16 ea. 2" x 4" Scaled Hinged Print Lifters, white, black, and transparent
- 16 ea. 4" x 4" Scaled Hinged Print Lifters, white, black, and transparent

Reorder No.	Description
LFT-TWB-144(S)	Deluxe Scaled Hinged Print Lifter Kit

Hinged Palm Print Lifter

Our 6" x 9" Hinged Palm Print Lifters are sized for lifting developed palm prints. The covers are made from .005" thick, crystal clear, adhesive-backed mylar that is hinged to .01" thick vinyl backing cards, and they are available with white, black, or transparent backing cards.

After developing the print, simply peel off the inside release liner to expose the adhesive, "lift" the print, then close the mylar against the vinyl backing card to permanently secure it.

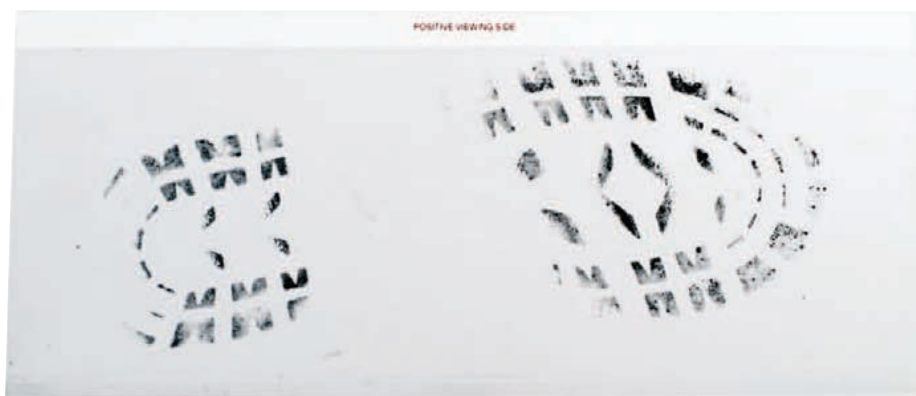


Reorder No.	Description
LFT-W-6X9	Hinged Palm Print Lifter - 6" x 9", 12/pkg, White
LFT-B-6X9	Hinged Palm Print Lifter - 6" x 9", 12/pkg, Black
LFT-T-6X9	Hinged Palm Print Lifter - 6" x 9", 12/pkg, Transparent

Hinged Footprint Residue Lifter

Our 6" x 15" Hinged Footprint Residue Lifters are for collecting footprint residue found at crime scenes and are .005" thick, crystal clear, adhesive-backed mylar.

Simply peel off inside release liner and place the mylar, adhesive side down, on the footprint. After lifting the footprint, affix the mylar to the acetate backing card to protect the print. It's that easy!



Reorder No.	Description
LFT-W-6X15	Hinged Footprint Residue Lifter - 6" x 15", 12/pkg, White
LFT-B-6X15	Hinged Footprint Residue Lifter - 6" x 15", 12/pkg, Black
LFT-T-6X15	Hinged Footprint Residue Lifter - 6" x 15", 12/pkg, Transparent

Hinged Print Lifters - Pro-Lift®

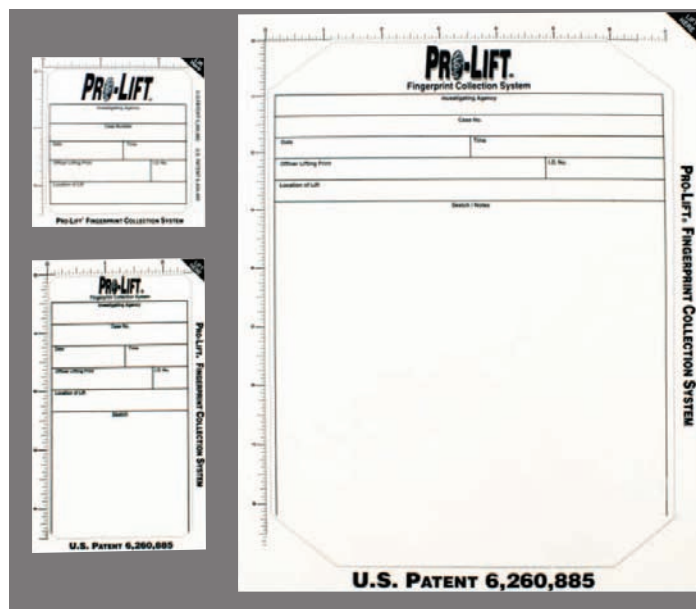


Pro-Lift® uses a unique approach for lifting developed prints from a variety of surfaces and provides several advantages over both tape rolls and hinged lifters.

Pro-Lift® lifters are available in three different sizes, with either white or black backing cards, and transparent lifting tape.

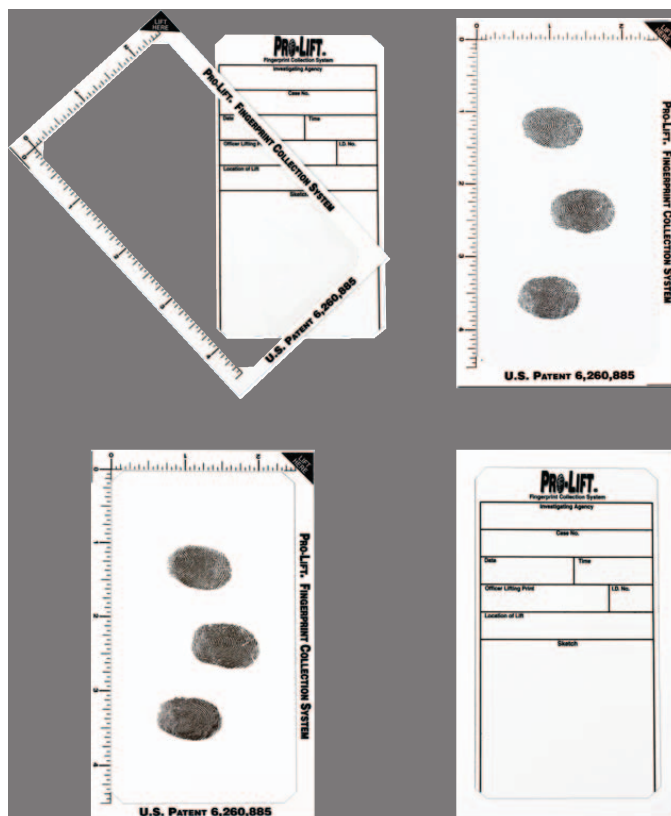
FEATURES

- **One-piece design** - Lifting tape and backing card is preassembled for easy use.
- **Protective Patented Frame** - Keeps your prints and/or smudges off the tape and prevents wrinkling.
- **Measurement Scales** - Each axis of the frame serves as a visual guide for courtroom demonstrations when enlargements are shown.
- **Tamper-Proof** - Permanently affixes lifted print with all information pertaining to the print.
- **Courtroom Presentations** - Provides a clean and professional look in court.



TIP

See pages 113 - 117 to purchase our Atomic CRP Latent Print Powders.



To lift a developed print with a Pro-Lift® Lifter, simply follow these four steps:

STEP 1

Peel off the backing card from the back of the lifter.

STEP 2

Lift the developed print.

STEP 3

Affix blank side of backing card to lifted print.

STEP 4

Fill out information requested on back of backing card.

Reorder No.	Description
LFT-PLTW-3X3	Pro-Lift® Latent Print Lifters - 3" x 3", 100/pkg, White
LFT-PLTB-3X3	Pro-Lift® Latent Print Lifters - 3" x 3", 100/pkg, Black
LFT-PLTW-3X5	Pro-Lift® Latent Print Lifters - 3" x 5", 100/pkg, White
LFT-PLTB-3X5	Pro-Lift® Latent Print Lifters - 3" x 5", 100/pkg, Black
LFT-PLTW-8X10	Pro-Lift® Latent Print Lifters - 8" x 10", 100/pkg, White
LFT-PLTB-8X10	Pro-Lift® Latent Print Lifters - 8" x 10", 100/pkg, Black

Hinged Print Lifters - Back-Up™

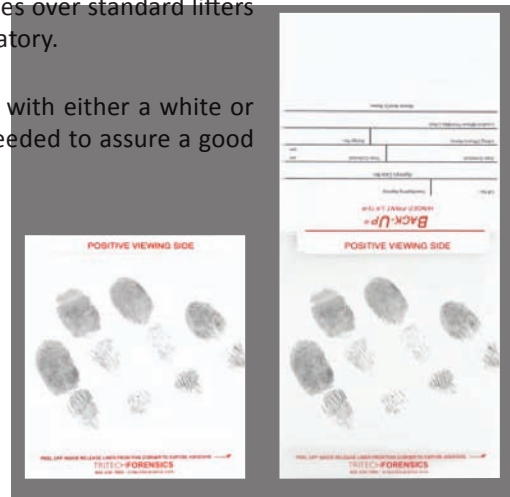
Back-Up™ Hinged Latent Print Lifters are a new design with several advantages over standard lifters for both the collecting officer at a crime scene and the examiner in the laboratory.

First, Back-Up™ Lifters are identical to standard lifters; however, they come with either a white or black backing card affixed to the lifter, providing the background contrast needed to assure a good print has been collected.

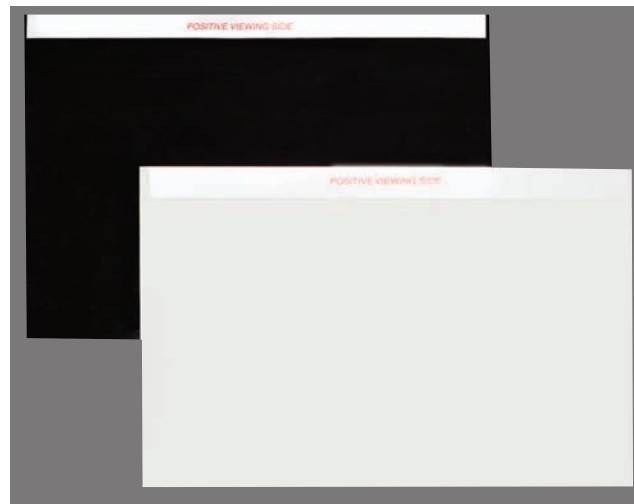
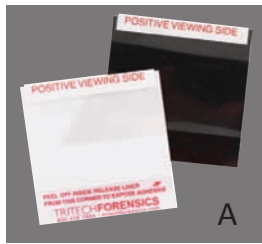
Second, the Back-Up™ backing cards are preprinted on the reverse side to help assure all pertinent information to the lifted print is recorded.

Third, Back-Up™ lifters allow the examiner in the lab to flip back the backing card and examine and photograph the lifted print using transmitted light (backlight) which provides maximum detail of the latent print.

Back-Up™ Hinged Latent Print Lifters are available in four standard hinged lifter sizes: 1.5" x 2", 2" x 4", 4" x 4", and 6" x 9" for palm prints. All sizes are available with either white or black, .012" thick, high gloss finish backing cards.



Back-Up™ Lifters shown with backing card in place and flipped back for lab examination.



D

Reorder No.	Description
LFT-BU-W-1.5X2	(A) Back-Up Hinged Latent Print Lifters - 1.5" x 2", 24/pkg, White
LFT-BU-B-1.5X2	(A) Back-Up Hinged Latent Print Lifters - 1.5" x 2", 24/pkg, Black
LFT-BU-W-2X4	(B) Back-Up Hinged Latent Print Lifters - 2" x 4", 24/pkg, White
LFT-BU-B-2X4	(B) Back-Up Hinged Latent Print Lifters - 2" x 4", 24/pkg, Black
LFT-BU-W-4X4	(C) Back-Up Hinged Latent Print Lifters - 4" x 4", 24/pkg, White
LFT-BU-B-4X4	(C) Back-Up Hinged Latent Print Lifters - 4" x 4", 24/pkg, Black
LFT-BU-W-6X9	(D) Back-Up Hinged Latent Print Lifters - 6" x 9", 24/pkg, White
LFT-BU-B-6X9	(D) Back-Up Hinged Latent Print Lifters - 6" x 9", 24/pkg, Black



Hinged Print Lifters - Rubber/Gelatin

Our Rubber/Gelatin Hinged Latent Print Lifters are specifically designed for lifting fingerprints from paper, cardboard boxes, or even wallpaper without destroying the surface. The low-adhesive gelatin on the rubber backing "card" allows the collection of developed prints from rough, grained or irregular surfaces, as well.

Our series of Rubber/Gelatin print lifters are available in 3 different sizes with white, black, or transparent adhesive rubber backing cards and crystal clear mylar cover sheets.



Reorder No.	Description
LFT-RW-2X2	Rubber/Gelatin Hinged Latent Print Lifters - 2" x 2", 12/pkg, White
LFT-RB-2X2	Rubber/Gelatin Hinged Latent Print Lifters - 2" x 2", 12/pkg, Black
LFT-RT-2X2	Rubber/Gelatin Hinged Latent Print Lifters - 2" x 2", 12/pkg, Transparent
LFT-RW-2X4	Rubber/Gelatin Hinged Latent Print Lifters - 2" x 4", 12/pkg, White
LFT-RB-2X4	Rubber/Gelatin Hinged Latent Print Lifters - 2" x 4", 12/pkg, Black
LFT-RT-2X4	Rubber/Gelatin Hinged Latent Print Lifters - 2" x 4", 12/pkg, Transparent
LFT-RW-4X4	Rubber/Gelatin Hinged Latent Print Lifters - 4" x 4", 12/pkg, White
LFT-RB-4X4	Rubber/Gelatin Hinged Latent Print Lifters - 4" x 4", 12/pkg, Black
LFT-RT-4X4	Rubber/Gelatin Hinged Latent Print Lifters - 4" x 4", 12/pkg, Transparent

PRINT LIFTERS - TAPE & BACKING CARDS

Footprint Lifters - Rubber/Gelatin Cards



These 5.125" wide by 14.125" long lifters are especially useful for collecting minute particles of dust or dirt left by footwear on rough surfaces such as cement floors or sidewalks. The thick, adhesive rubber backing cards allows you to press the lifter into rough surfaces and pick up particles that would be left behind by mylar lifters.

TIP

Longevity of lifted footprints - Lifted shoe prints (dust marks) may slowly fade in time. For very weak prints, this may be noticeable after storing for a few days. This will depend on temperature. The lower the temperature, the slower the fading. This, however, should not be a concern since lifted footprints can easily be photographed after removing the cover sheet. Oblique lighting will show details not visible before photography. So far, no materials are known to us that faded on the lifter surface before satisfactory photographs had been taken.

Reorder No.	Description
LFT-RW-5X14	Rubber/Gelatin Footprint Lifter - 5.125" x 14.125", 2/pkg, White
LFT-RB-5X14	Rubber/Gelatin Footprint Lifter - 5.125" x 14.125", 2/pkg, Black
LFT-RT-5X14	Rubber/Gelatin Footprint Lifter - 5.125" x 14.125", 2/pkg, Transparent

Available from : **SSPA +612 4645 7600 www.sspa.net.au**



NEW ITEM

TRITECHFORENSICS is pleased to introduce the revolutionary ZAR-PRO™ Fluorescent Blood Lifting Strips which allow the law enforcement officer to quickly and easily lift and preserve bloody impressions from virtually any surface. These lifting strips are perfect for large or immovable objects that cannot be brought back to the laboratory for analysis.

Lifts made with ZAR-PRO™ technology are permanent and cannot be smeared or smudged. ZAR-PRO™ Fluorescent Blood Lifting Strips allow the user to clearly and effectively examine impressions that otherwise would be unidentifiable due to background patterns or colors. In addition, ZAR-PRO™ lifting strips provide great contrast when enhanced with an ALS or forensic laser.

PRESERVING BLOODY IMPRESSION EVIDENCE

ADAPTABLE USABILITY

Bloody impressions are frequently found at the scene of violent crimes. These impressions provide valuable evidence and often help crime scene investigators identify suspects. Many items at a crime scene are fixed or too large to be brought back to the crime lab for analysis. This creates limitations on many departments and means numerous impressions are simply photographed with inadequate clarity and not fully analyzed in the laboratory. ZAR-PRO™ Fluorescent Blood Lifting Strips provide investigators with a safe, non-toxic fluorogenic method for lifting bloody impression evidence and can be standardized for use with substrates of all porosities, regardless of background pattern or color. These lifting strips are simple to use and are affordable for all law enforcement agencies regardless of budget.



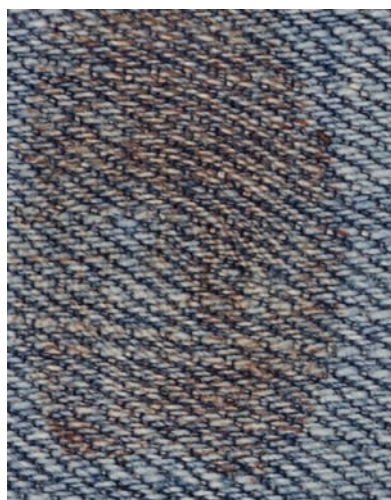
Aluminum 1 month (ALS)

YOUR TIME IS IMPORTANT

The entire process is quick and easy. You activate the lifting strip with ZAR-PRO™ Activator Solution and then lift the bloody impression for analysis. This process can be completed in just seconds.

SUPERIOR RESULTS

The fluorogenic property of the lifting strip does not require enhancement chemicals. These fluorescent properties are attributed to metal-enhanced fluorescence. Bloody and other proteinaceous secretions contain fluorophores, which cause the strips to fluoresce when visualized with an ALS or forensic laser. Lifted impressions are considered permanent and suitable for long term storage.



Porous: Denim



Lifted Impression

Reorder No.	Description
LFT-ZP-8X8	ZAR-PRO™ Fluorescent Blood Lifting Strips - 8" x 8"
LC-AS-8	ZAR-PRO Activator Solution - 8 oz.



US Patent Serial No. 11/952,672, 60/873,470, 12/581,557, and 12/698,727

Latent Print Lifting Tapes

Our series of Lifting Tapes are the finest tapes available. They have a uniform application of adhesive and are heat-treated and pressure wound to eliminate fish-eyes found in other brands of lifting tape.

These tapes (360" L) are supplied on one inch cores, are available in both transparent and frosted versions, and come in 1.5", 2", 3", and 4" widths.

To prevent contamination, we provide our tape rolls in either ziplock bags or plastic tubes.

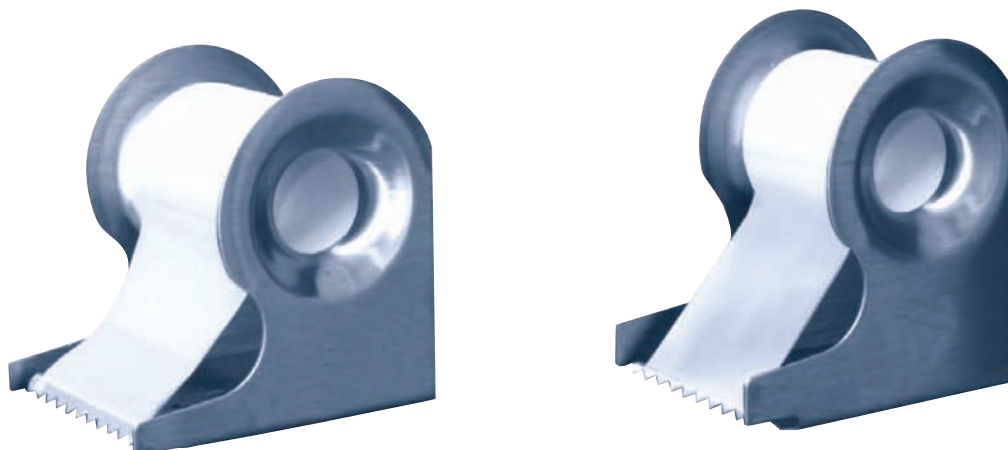


Description	Transparent Tape Re. No.	Frosted Tape Re. No.
1.5" W x 360" L, in plastic tube	TAPE-TT-1.5	TAPE-FT-1.5
2" W x 360" L, in plastic tube	TAPE-TT-2	TAPE-FT-2
3" W x 360" L, in plastic tube	TAPE-TT-3	TAPE-FT-3
4" W x 360" L, in plastic tube	TAPE-TT-4	TAPE-FT-4
1.5" W x 360" L, in ziplock bag	TAPE-TB-1.5	TAPE-FB-1.5
2" W x 360" L, in ziplock bag	TAPE-TB-2	TAPE-FB-2
3" W x 360" L, in ziplock bag	TAPE-TB-3	TAPE-FB-3
4" W x 360" L, in ziplock bag	TAPE-TB-4	TAPE-FB-4

Latent Print Tape Dispensers

Our brushed metal Tape Dispensers provide an easy way to hold, dispense, and cut lifting tape.

Both our 1.5" and 2" wide dispensers are designed to hold rolls of lifting tape supplied on 1" cores, and both models come with a sharp, serrated tape-cutting blade and predrilled holes for mounting the dispensers to tabletops.



Reorder No.	Description
TAPEDISP1.5	Wide Tape Dispenser - 1.5"
TAPEDISP2	Wide Tape Dispenser - 2"

Latent Print Lifting Tapes - Poly-Stretch



Our Poly-Stretch Tape (360" L) is ideal for lifting prints from uneven or curved surfaces such as doorknobs, steering wheels, etc. The tape's strength, flexibility, and stretchability allow it to conform to a variety of surfaces. It also works well under extreme temperature ranges and will not become brittle in subzero temperatures or melt on surfaces over 100° F.

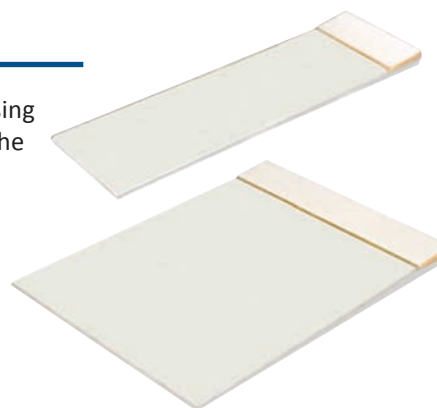
Reorder No.

Description

TAPE-PEB-1.5	Poly-Stretch Lifting Tape - 1.5" x 360"
TAPE-PEB-2	Poly-Stretch Lifting Tape - 2" x 360"

Latent Print Lifting Tape Pads - Precut

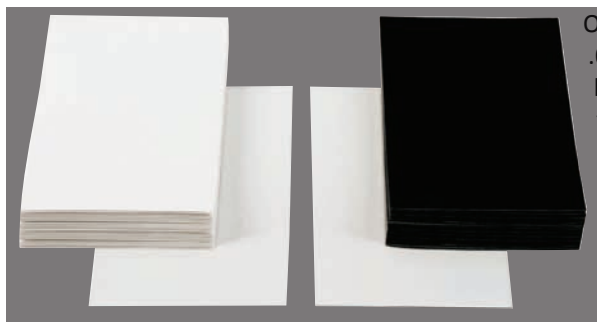
This Precut Transparent Lifting Tape is provided in an easy-to-use peel-off pad. Using the white leader, simply peel off a strip of tape, lift the developed print, then affix the tape to a backing card. Each pad contains 25 precut lifting tape strips.



Reorder No. Description

TAPE-TP-2	Precut Latent Print Lifting Tape Pad - 2" x 6", 25/pad
TAPE-TP-4	Precut Latent Print Lifting Tape Pad - 4" x 6", 25/pad

Latent Print Backing Cards - Reversible



Our 3" x 5" Backing Cards are made from the highest quality, cast coated, .012" thick card stock. Our reversible cards are available in both high gloss black and high gloss white finishes with a matte white finish reverse side for writing information pertaining to the lifted print. There are 100 loose backing cards per pack (not in a pad).

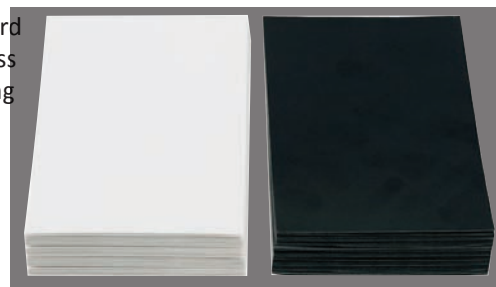
Reorder No.

Description

BC-W-3X5	Reversible Backing Cards - 3" x 5", 100/pkg, White
BC-B-3X5	Reversible Backing Cards - 3" x 5", 100/pkg, Black

Latent Print Backing Card Pads - Reversible

These reversible cards are the same 3" x 5" high quality cards sold in our 100-card pack, but they are provided in a convenient pad form. Available in both high gloss black and high gloss white finishes with a matte white finish reverse side for writing information pertaining to the lifted print.



Reorder No.

Description

BP-W-3X5	Reversible Backing Card Pad - 3" x 5", White
BP-B-3X5	Reversible Backing Card Pad - 3" x 5", Black

Latent Print Backing Card Pads - Crime Sketch



TRITECHFORENSICS' preprinted Crime Sketch Latent Print Backing Card Pads are available in 3" x 5" or 5.5" x 8.5" versions.

These backing cards are made from case coated, .012" thick card stock and are available in high gloss white and high gloss black finishes with printing on the matte white reverse sides.



Reorder No.	Description
BP-W-C	Crime Sketch Backing Card Pad - 3" x 5", 50/pad, Gloss White
BP-W-C-5.5X8.5	Crime Sketch Backing Card Pad - 5.5" x 8.5", 50/pad, Gloss White
BP-B-C	Crime Sketch Backing Card Pad - 3" x 5", 50/pad, Gloss Black
BP-W-C-5.5X8.5	Crime Sketch Backing Card Pad - 5.5" x 8.5", 50/pad, Gloss Black (shown)

Latent Print Backing Card Pads - Victim Sketch

Date:	Case No.:	Crime:
Victim:		
Address:		
Prints Lifted From:		
Prints Lifted By:	Badge No.:	
SKETCH		
FILE NO.:		
 TRITECHFORENSICS 800.438.7884 • tritechforensics.com		

TRITECHFORENSICS' preprinted Victim Sketch Latent Print Backing Cards are available in 3" x 5" or 5.5" x 8.5" versions. These backing cards are made from case coated, .012" thick card stock and are available in high gloss white and high gloss black finishes with printing on the matte white reverse sides.

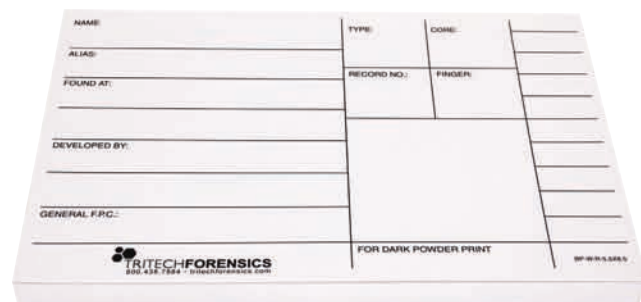
TIP

All our Latent Print Backing Card Pads can be customized to fit your agency's specific needs. Contact our Custom Product Division at 800.438.7884 for more details and pricing.

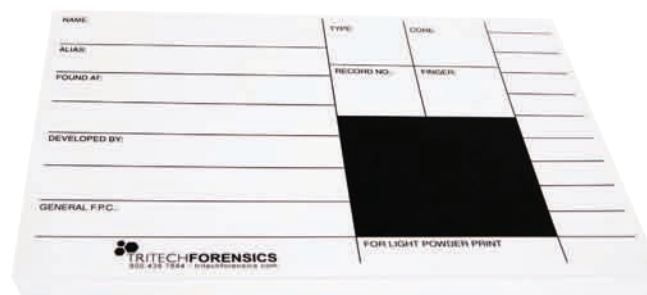
Reorder No.	Description
BP-W-V	Victim Sketch Backing Card Pad - 3" x 5", 50/pad, Gloss White (shown)
BP-W-V-5.5X8.5	Victim Sketch Backing Card Pad - 5.5" x 8.5", 50/pkg, Gloss White
BP-B-V	Victim Sketch Backing Card Pad - 3" x 5", 50/pad, Gloss Black
BP-B-V-5.5X8.5	Victim Sketch Backing Card Pad - 5.5" x 8.5", 50/pkg, Gloss Black

Latent Print Backing Card Pads - Record

TRITECHFORENSICS' preprinted Record Latent Print Backing Card Pads are available in 3" x 5" or 5.5" x 8.5" versions. These cards are designed for single prints and, unlike our other backing cards, are printed on the high gloss side of the .012" thick card stock. Each record card has a 1.375" x 1.75" (for the smaller card) or 2.75" x 2.25" (for the larger card) latent print space that comes in white or black to accommodate your powders.



A



B

Reorder No.	Description
BP-W-R	(A) Record Backing Card Pad - 3" x 5", 50/pad, White Printing Space
BP-W-R-5.5X8.5	(A) Record Backing Card Pad - 5.5" x 8.5", 50/pad, White Printing Space
BP-B-R	(B) Record Backing Card Pad - 3" x 5", 50/pad, Black Printing Space
BP-B-R-5.5X8.5	(B) Record Backing Card Pad - 5.5" x 8.5", 50/pad, Black Printing Space

Latent Print Backing Cards - Vinyl

These 4" x 4" cards are made from .01" vinyl and are available in matte black, matte white, and high gloss transparent.



Reorder No.	Description
BCV-B-4X4	Vinyl Backing Card - 4" x 4", 50/pkg, Matte Black
BCV-W-4X4	Vinyl Backing Card - 4" x 4", 50/pkg, Matte White
BCV-T-4X4	Vinyl backing Card - 4" x 4", 50/pkg, High Gloss Transparent

LATENT PRINT DEVELOPERS AND SUPPLIES CHEMICALS



Hydro-Print Wet Latent Print Developer



Hydro-Print (Small Particle Reagent) is specifically formulated for developing latent prints found outdoors on wet or damp surfaces such as automobiles, glass windows, plastic, or even oxidized metal surfaces. Using Hydro-Print is simple: add approximately 16 oz./500 ml. of either tap or distilled water to the Hydro-Print spray bottle which contains the Small Particle Reagent, then shake the bottle to assure a homogeneous solution. When Hydro-Print is sprayed on the surface where you suspect prints may be found, Hydro-Print will adhere to the oils found in fingerprints. Once the print has been developed, it should be photographed. After the print has dried, it can be lifted using tape or a hinged lifter.

Hydro-Print can also be used for developing latent prints on the “sticky side” of duct and packaging tape. Begin by mounting the tape, sticky side out, on a glass, plastic, or metal plate, then develop the print using Hydro-Print. After photographs have been taken, cover and protect the developed print by affixing lifting tape or the cover of a hinged lifter to the tape.

Hydro-Print is most effective if used within six months of manufactured date. It should be stored in a cool, dark place. A detailed instruction sheet is supplied with each 16 oz. bottle of Hydro-Print.

Reorder No.	Description
LC-SPRB-16	Hydro-Print Wet Latent Print Developer - Black, 16 oz./500 ml.
LC-SPRW-16	Hydro-Print Wet Latent Print Developer - White, 16 oz./500 ml.

Hydro-Print Wet Latent Print Developer Kits

Hydro-Print (Small Particle Reagent) is specifically formulated for developing latent prints found outdoors on wet or damp surfaces such as automobiles, glass windows, plastic, or even oxidized metal surfaces.

We offer three different Hydro-Print Kits; two of them include one bottle of Hydro-Print Spray (your choice of either black or white) while the last offers two bottles of Hydro-Prints Spray (one bottle of each color).

Each kit contains all components necessary for developing latent prints on wet surfaces, along with a detailed instruction sheet.



KIT COMPONENTS	1 ea. Copolymer Carrying Case, 12.125" L x 7.25" W x 5.5" H	20 ea. Nitrile Barrier Gloves
	1 ea. Hydro-Print Spray, 16 oz./500 ml. white, black, or white and black	1 ea. Kit Instruction Sheet
	1 ea. Spray Rinse Water Bottle (empty)	
	Reorder No.	Description
	CK-SPRW/B	Hydro-Print Wet Latent Print Developer Kit - White/Black
	CK-SPRW	Hydro-Print Wet Latent Print Developer Kit - White
	CK-SPRB	Hydro-Print Wet Latent Print Developer Kit - Black

Our quick drying Ninhydrin Spray is supplied in an easy-to-use pump misting bottle and is an extremely sensitive method for developing old latent prints on paper documents, letters, newspaper, envelopes, wrapping paper, checks, and even wallpaper at a crime scene.

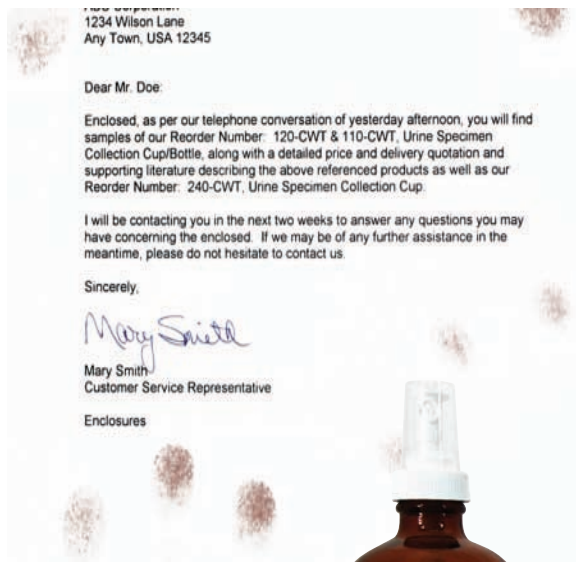
Ninhydrin reacts to the proteins and amino acids found in fingerprints. When ninhydrin is sprayed on the suspected area, the print will appear purple in color when heated to approximately 220 degrees in an oven or with a hair dryer or infrared lamp.

We also offer Extra-Strength Ninhydrin Spray which has been specially formulated to eliminate ink from running on paper.

Because it requires less technique than using Small Particle Reagent or other methods, Ninhydrin is a simple way to develop latent print on the "sticky side" of duct and clear tape. Simply mount the tape, sticky side out, on a sheet of cardboard, then spray the tape with Ninhydrin and let the tape sit at room temperature. Usable patterns will begin to appear within one to two hours and, after approximately 24 hours, clearly identifiable prints will develop.

Normally, heat is used to speed up the development of prints treated with Ninhydrin; however, applying heat to the tape can result in the tape adhesive melting or cause the tape to wrinkle which will either destroy or distort the print.

After photographing the print, it is then sprayed with a Ninhydrin Print Fixative to preserve the Ninhydrin. The developed print is then protected by affixing either lifting tape or the cover of a hinged lifter to the tape. A detailed instruction sheet is supplied with each bottle of our Ninhydrin Spray.



TIP See our selection of lifting tapes to use with the Ninhydrin Spray on pages 134 - 135.



Reorder No.	Description
LC-NIN-8	Regular Ninhydrin Spray - 250 ml. (8 oz.)
LC-NIN-16	Regular Ninhydrin Spray - 500 ml. (16 oz.)
LC-NINX-8	Extra-Strength Ninhydrin Spray - 250 ml. (8 oz.)
LC-NINX-16	Extra-Strength Ninhydrin Spray - 500 ml. (16 oz.)

**NEW ITEM**

Ninhydrin Crystals



For those agencies preferring to mix their own Ninhydrin, we offer three sizes of Ninhydrin Crystals. The Ninhydrin method of revealing latent prints is extremely sensitive and provides distinct, contrasting prints. If you have not used this product in the past, it is recommended that you first pre-test it in order to assure desired results. Paper treated with ninhydrin is sensitive to new fingerprints, and a good protocol would be to fix the paper and developed prints. Taking a photograph of the prints allows for closer examination of the prints. Shelf life of Ninhydrin Crystals is three to four years.

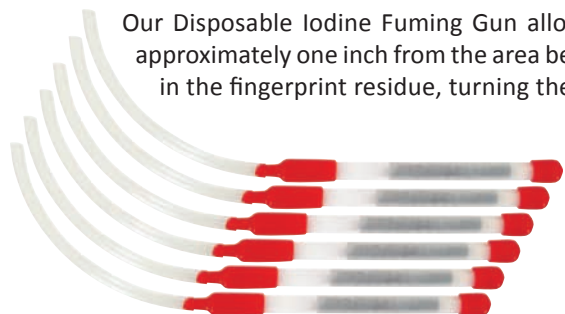


Reorder No.	Description
FP-NIN-25	Ninhydrin Crystals - 25 g.
FP-NIN-100	Ninhydrin Crystals - 100 g.
FP-NIN-500	Ninhydrin Crystals - 500 g.

**NEW ITEM**

Disposable Iodine Fuming Gun

Our Disposable Iodine Fuming Gun allows you to simply blow into the flexible vinyl tube while holding the tip approximately one inch from the area being fumed. The iodine fumes will be absorbed by the different components in the fingerprint residue, turning the print brown in color.




Reorder No.	Description
FM-D6	Disposable Iodine Fuming Gun

Ninhydrin Print Fixative

Our Ninhydrin Print Fixative is used to permanently "fix" prints which have been developed using Ninhydrin. Simply spray the fixative over the print and allow fixative to air-dry.

In the event that stains from Ninhydrin need to be removed from a particular surface, spray or swab our Ninhydrin Print Remover (Reorder No: LC-NINR-8) on the surface and the stain will disappear within a few minutes.

Reorder No.	Description
LC-NINF-8 	Ninhydrin Print Fixative - 250 ml. (8 oz.)



Ninhydrin Print Remover

In the event that stains from Ninhydrin need to be removed from a particular surface, spray or swab our Ninhydrin Print Remover on the surface and the stain will disappear within a few minutes.

Our Ninhydrin Print Fixative (Reorder No: LC-NINF-8) is used to permanently "fix" prints which have been developed using Ninhydrin. Simply spray the fixative over the print and allow fixative to air-dry.



Reorder No.	Description
LC-NINR-8 	Ninhydrin Print Remover - 250 ml. (8 oz.)

 = Hazard  = Air-Hazard  = Excessive Weight  = Oversize • See page 282 for more shipping information.

Available from : **SSPA +612 4645 7600 www.sspa.net.au**

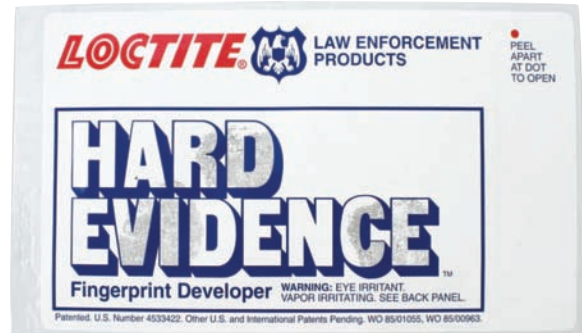
LATENT PRINT DEVELOPERS AND SUPPLIES - CYANOACRYLATE



Hard Evidence™ Fuming Pouches

Hard Evidence™ Latent Print Developer fingerprint developing pouches are an easy-to-use, one-part fuming system. Each peel-open pouch contains cyanoacrylate in a gel form which will not spill, leak, or flow from the opened pouch.

To use Hard Evidence™ Fuming Pouches, simply place the item to be fumed for prints in a fuming chamber, fish aquarium, or large clear plastic bag along with a small container of warm water to increase humidity. Peel open a fuming pouch and place the pouch in with the item. Fuming and print development starts immediately and usually takes 20-30 minutes to thoroughly develop prints.



Reorder No.	Description
HE-FP	Hard Evidence™ Fuming Pouches, 20 pouches/pkg

Hard Evidence™ Latent Print Liquid Developer

Liquid Hard Evidence™ Latent Print Developer works essentially the same way Hard Evidence™ Latent Print Fuming Pouches (Reorder No. HE-FP) do; however, in order to accelerate the generation of cyanoacrylate fumes, a hot plate is frequently used.

Simply pour the appropriate amount of Liquid Hard Evidence™ into a small aluminum tray and place the tray on an electric hot plate.

The 16 oz./1 lb. bottle includes 5 empty 1 oz. dispenser bottles.



Reorder No.	Description
HE-LD-1	Hard Evidence™ Liquid Developer - 30 ml. (1 oz.)
HE-LD-16	Hard Evidence™ Liquid Developer - 473 ml. (16 oz./1 lb.)

Liquid Cyanoacrylate

TTF's Liquid Cyanoacrylate can be used in conjunction with our Hot Plate (Reorder No. HP-120) or with an existing heating source or cyanoacrylate fuming chamber to provide users with a fast and effective method of developing latent prints.



Reorder No.	Description
LC-CYAN-1	TTF Liquid Cyanoacrylate - 1 oz., 5 Bottles/Case
LC-CYAN-16	TTF Liquid Cyanoacrylate - 16 oz., 1 Bottle



Hot Plate & Fuming Trays

Accelerate the cyanoacrylate fuming process by using a hot plate and aluminum dish inside a fuming chamber. The Hot Plate features a large 3" diameter heating surface and has an easy on/off switch. The 2" diameter 1.5" deep Aluminum Fuming Trays are available 100/case.



Reorder No.	Description
HP-120	Hot Plate
HE-TRAY	Aluminum Fuming Trays - 100 trays/pkg

Peel & Fume™ Cyanoacrylate Latent Print Fuming Pouches



Our Peel & Fume™ Cyanoacrylate Latent Fingerprint Developing Pouches are an easy-to-use, one-part fuming system. Each peel-open foil pouch contains cyanoacrylate in a gel form which will not leak or flow from the opened pouch.

Using Peel & Fume™ is straightforward; simply place the item to be fumed for prints in a fuming chamber along with a small container of warm water to increase humidity. Peel open a fuming pouch and place the pouch in with the evidence. Fuming and print development starts immediately and

usually takes 10-20 minutes to thoroughly develop prints (depending on the size of the fuming chamber).

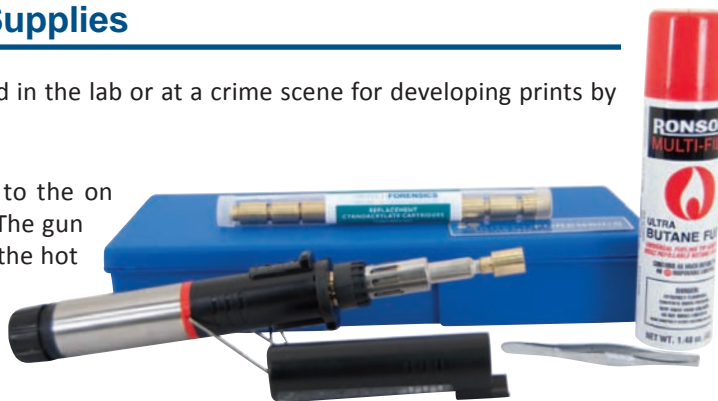
Reorder No.	Description
PF-FP/20	Peel & Fume™ Cyanoacrylate Fuming Pouches - 20 pouches/pkg
PF-FP/100	Peel & Fume™ Cyanoacrylate Fuming Pouches - 100 pouches/pkg

Cyanoacrylate Fuming Gun Kit and Supplies

Our butane-fueled, auto-igniting fuming gun can be used in the lab or at a crime scene for developing prints by means of cyanoacrylate fuming.

To use the gun, simply slide the on/off igniter switch to the on position and cyanoacrylate fuming begins immediately. The gun is also provided with a built-in bipod stand which keeps the hot tip of the gun off surfaces during cool down.

Our butane cartridge will fuel three to four hours of continuous operation.



KIT COMPONENTS

- 1 ea. Copolymer Carrying Case, 14" L x 6" W x 2.5" H
- 1 ea. Cyanoacrylate Fuming Gun
- 1 ea. 1.48 oz. Butane Cartridge
- 10 ea. Cyanoacrylate Cartridges
- 1 ea. Cartridge Extraction Tool
- 1 ea. Kit Instruction Sheet

Reorder No.	Description
CK-CF	A Cyanoacrylate Fuming Gun Kit
FM-CC	Replacement Cyanoacrylate Cartridges - 10/pkg
FM-CCL	Extra Large Replacement Cyanoacrylate Cartridge
FM-BC	A Butane Fuel Canisters, 1.48 oz. (42 g.) - 6 Can./Case

H = Hazard **A** = Air-Hazard **W** = Excessive Weight **O** = Oversize • See page 282 for more shipping information.

Available from : **SSPA +612 4645 7600 www.sspa.net.au**

With Rechargeable Cartridge

The Fuma-Dome™ is a revolutionary system for developing latent prints by via cyanoacrylate (superglue) fumes. Unlike other fuming guns, the Fuma-Dome™ combines a fuming gun and fuming chamber into one system specifically designed for use at a crime scene. It can also be used in the crime laboratory.

This innovative design also incorporates a rechargeable cyanoacrylate cartridge, eliminating the need to purchase expensive one-use-only cartridges. At less than 25 cents per charge, the Fuma-Dome™ is extremely cost effective for your department.



Developing latent prints with Fuma-Dome™ is simple and straightforward:

- STEP 1** Squeeze trigger and depress button on back to lock in *on* position. Fumes will begin.
- STEP 2** Place the Fuma-Dome™ over any evidence where you expect to find prints. Prints will start to develop within a few seconds.

Recharging the cartridge:

After the cyanoacrylate is depleted, recharging is quick and easy:

- STEP 1** Squeeze six to seven drops of our liquid cyanoacrylate onto the porous steel ball located between the two bronze retaining screens.
- STEP 2** After approximately five minutes of drying time, slide the cyanoacrylate cartridge back onto the torch, and your Fuma-Dome™ is ready for the next time you need it. A recharged cartridge will provide you with approximately five to ten minutes of fuming.



SYSTEM FEATURES

- **Cost Effective** - Rechargeable cyanoacrylate cartridge - no need to purchase expensive one-use-only cartridges
- **Efficient** - Approximately 5-10 minutes of cyanoacrylate fuming at recommended butane fuel setting
- **Fast** - Latent prints are developed in seconds
- **Fuma-Dome™ is supplied with:**
 - 1 ea. 1.48 oz. Pressurized Butane Fuel Container
 - 1 ea. 1 oz. Liquid Cyanoacrylate Bottle (to recharge the cartridge)
 - 1 ea. Detailed Instruction Sheet

Reorder No. Description

CK-FDS **A** Fuma-Dome™ System

Fuma-Dome™ was developed by David E. Weaver, CLPE.



ADDITIONAL FEATURES

- The clear, 11" diameter plastic dome allows you to monitor the prints as they develop.
- The Fuma-Dome™ can be used for developing prints on larger surfaces such as glass windows, doors, tabletops, or even vehicles.
- The Fuma-Dome™ can also be used as a traditional fuming gun. When used in this manner, the dome directs the cyanoacrylate fumes away from you.



Figure 1

Fuma-Dome™ Accessories and Supplies



Reorder No. CS-181508F

This 18.5" L x 15.5" W x 8.25" H lockable Carrying Case with foam inserts is specially designed to protect the Fuma-Dome™ when it is being transported to a crime scene.



Figure 2

Reorder No. LC-CYAN-1

Replacement 1 oz. Bottles of TTF Liquid Cyanoacrylate for recharging the cartridge.



Reorder No. FM-BC

Replacement 1.48 oz. pressurized Butane Canister for recharging the butane torch. One canister will provide approximately three to four hours of continuous use at the recommended gas setting. **A**

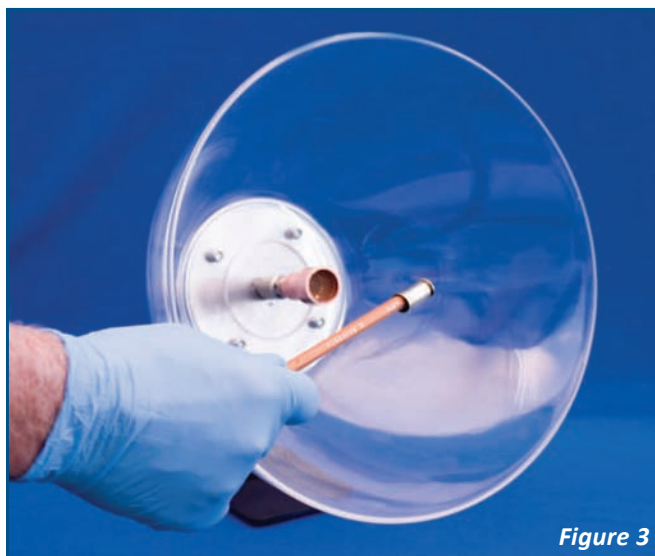


Figure 3

Reorder No.	Description
CS-181508F	Fuma-Dome™ Carrying Case
LC-CYAN-1	Additional Liquid Cyanoacrylate - 1oz., 5 Bottles/Case
FM-BC	Additional Butane Fuel Canisters - 1.48 oz. (42 g.), 6 Canisters/Case
FD-CAR	Rechargeable Fuming Cartridge
FD-DOME	Fuma-Dome™ Replacement Dome

H = Hazard **A** = Air-Hazard **W** = Excessive Weight **O** = Oversize • See page 282 for more shipping information.

Available from : **SSPA +612 4645 7600 www.sspa.net.au**



Fuma-Gun

NEW ITEM

The Fuma-Gun Cyanoacrylate Fuming System is the most versatile fuming wand available. It's similar to traditional fuming wands in that it is butane fueled and auto-igniting; however, that's where the similarities end. The Fuma-Gun incorporates a rechargeable cyanoacrylate cartridge which eliminates the need to purchase expensive one-use-only cartridges. At less than 25 cents per charge, the Fuma-Gun is extremely cost effective for your department.




It also provides users with the industry's first ergonomically correct pistol grip handle. This same handle also acts as a base for the Fuma-Gun, which makes this the only free-standing fuming wand on the market.

The Fuma-Gun is perfect at crime scenes or in the lab. Its free-standing design allows for hands-free use when used in conjunction with a fuming chamber.

The Fuma-Gun Cyanoacrylate Fuming System includes the Fuma-Gun, one 1 oz. bottle of TRITECHFORENSICS Liquid Cyanoacrylate, and one canister of Butane Fuel, and it is available with or without a sturdy carrying case.



To develop latent prints with this new fuming gun, squeeze the trigger to release and ignite the butane fuel. Place the Fuma-Gun where you expect to find prints and, within a few seconds, prints will begin to develop.

Reorder No.	Description
CK-FG	 Fuma-Gun with Carrying Case
FG-GUN	 Fuma-Gun without Carrying Case
FD-CAR	Rechargeable Fuming Cartridge
LC-CYAN-1	Liquid Cyanoacrylate - 1 oz., 5 Bottles/Case
FM-BC	 Butane Fuel Canisters - 1.48 oz. (42 g.), 6/Case

Press & Fume™ was developed by David E. Weaver, CLPE.

Press & Fume™ Cyanoacrylate Latent Print Developer

This low-cost, disposable cyanoacrylate fuming device is specifically designed for developing latent prints within five minutes, either in the laboratory or at a crime scene.

Prints developed using cyanoacrylate (superglue) are considered strong and permanent; therefore, after photographs are taken, the evidence can be transported to the lab without damage to the developed prints.



Press & Fume™ consists of a 4" L x 1.5" W x .75" H cardboard box with two prefilled, hermetically sealed glass ampoules containing cyanoacrylate and a high density cotton pad saturated with a catalyst and accelerant solution, then thoroughly dried. Developing prints with Press & Fume™ is easier and faster than other fuming techniques and virtually eliminates the possibility of damaging developed prints when evidence is transported back to the lab.

Using Press & Fume™ to develop prints is a simple, two step procedure:

- STEP 1** After placing the Press & Fume™ box in the bottom of a fuming chamber or cardboard box, simply break the two ampoules with the ampoule breaker supplied in each case of kits.
- STEP 2** Cyanoacrylate vapors will immediately start fuming from the .125" diameter vents on top of the Press & Fume™ box, and prints will fully develop within five minutes (in a 3 cubic ft. chamber).

Reorder No.	Description
CK-PFCD	Press & Fume™ - 10 boxes/case

Press & Fume™ was developed by David E. Weaver, CLPE.

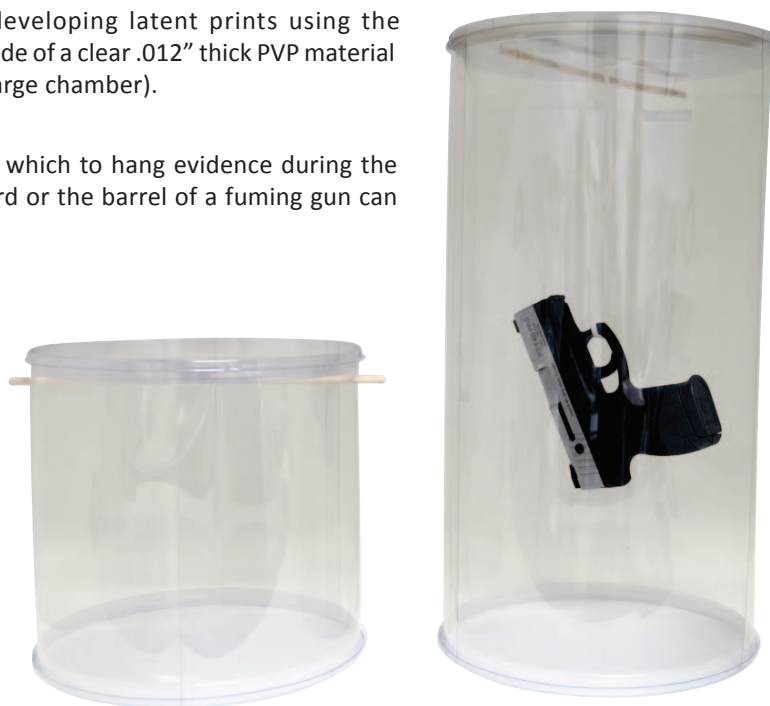
FUMING CHAMBERS & DOWNFLOW WORKSTATIONS



Low-Cost Disposable Fuming Chamber

Our Disposable Fuming Chambers are used for developing latent prints using the cyanoacrylate fuming method. These chambers are made of a clear .012" thick PVP material and weigh only 4.9 oz. (small chamber) and 7.2 oz. (large chamber).

Both 9.5" diameter chambers come with a rod from which to hang evidence during the fuming procedure. Holes for a hot plate electrical cord or the barrel of a fuming gun can be easily made using a pen knife.



Reorder No.	Description
DFC-9	Disposable Fuming Chambers - 3/pkg, 9.5" x 9"
DFC-18	Disposable Fuming Chambers - 3/pkg, 9.5" x 18"

Portable Fuming Chamber



Our lightweight, plexiglass 14" L x 14" W x 20.5" H Fuming Chamber weighs less than 10 lbs. and can be used in the laboratory or as a portable fuming chamber at crime scenes.

It can be assembled and disassembled in a matter of minutes and is supplied with a metal bar and clips for holding evidence during the fuming process along with an opening for inserting a fuming gun.

Reorder No.	Description
FM-PC	Portable Fuming Chamber
FM-PCC	Fuming Chamber Carrying Case

Laboratory Cyanoacrylate Fuming Chambers



These Fuming Chambers are specifically designed for use in Crime Laboratories. A patented, ductless system incorporates carbon filters which capture the cyanoacrylate fumes, therefore requiring no modifications to your laboratory. High-quality, uniform latent print development is ensured by internal circulation fans that move cyanoacrylate fumes evenly throughout the chamber. The chamber is programmable, offering consistent, reproducible results.

FEATURES

Programmable Controls

- Full automation of fuming process
- Fuming and filtering intervals customized to user preference
- Monitors number of fume cycles to track filter life

Safety Features

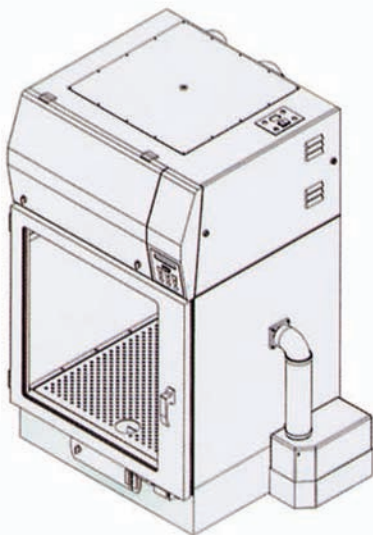
- Prevents exposure to cyanoacrylate fumes
- Completely sealed unit
- Multilayered carbon filter

Design and Construction

- Easy-to-clean safety glass
- Constructed of aluminum and steel
- Ductless and portable
- 2-year warranty

TIP

See additional units in our Laboratory Equipment Section on pages 252 - 262



Reorder No. LFC-1120

(Benchtop)
32" L x 37" W x 53" H



Reorder No. LFC-2120

(Mobile)
32" L x 37" W x 89" H

**Cart Sold Separately*

Reorder No. LFC-CART

(Cart)
34" L x 39" W x 25" H

Reorder No.	Description
LFC-1120	Benchtop Laboratory Fuming Chamber - (120 V/60Hz.), 32" L x 37" W x 53" H
LFC-2120	Mobile Laboratory Fuming Chamber - (120 V/60Hz.), 32" L x 37" W x 89" H
LFC-CART	Mobile Cart - 34" L x 39" W x 25" H
LFC-FILTER	Replacement Multilayer Carbon Filter - For either chamber

230V/50Hz models available. Call for pricing.

Available from : **SSPA +612 4645 7600 www.sspa.net.au**



Latent Print Downflow Workstation

Our Downflow Workstation is designed to virtually eliminate latent print powder from the operator's eyes, clothing, and respiratory system as well as surrounding surfaces.

This small, lightweight workstation is ductless and can easily be moved from one location to another within your lab or even taken to a crime scene.

The principle of the operation is straightforward: simply turn the On/Off switch to the on position, place or hold the object being dusted for prints over the stainless steel work surface, and then develop the print. Any "extra" powder will be drawn down into the workstation by means of a powerful 160 cfm. centrifugal fan and then captured in the filtering system.

If your laboratory has strong cross air flow from doors, windows, or air conditioning/heating vents, the Air Guard will solve your problem. This one-piece, three sided, .375" thick, clear acrylic guard can be ordered either with the Downflow Workstation or at a later date.

A 3X Magnifying Lamp for the Downflow Workstation is also available.

Filtering System

- Technostat, pre-filter (traps particles down to 5 microns in size)
- HEPA, secondary-filter (traps particles down to 0.3 microns in size)
- Filtering system effective to 99.997%
- HEPA secondary-filter does not need replacing for 1 to 3 years, depending on use and the frequency with which the Technostat pre-filter is changed
- Complies with OSHA and ANZI guidelines

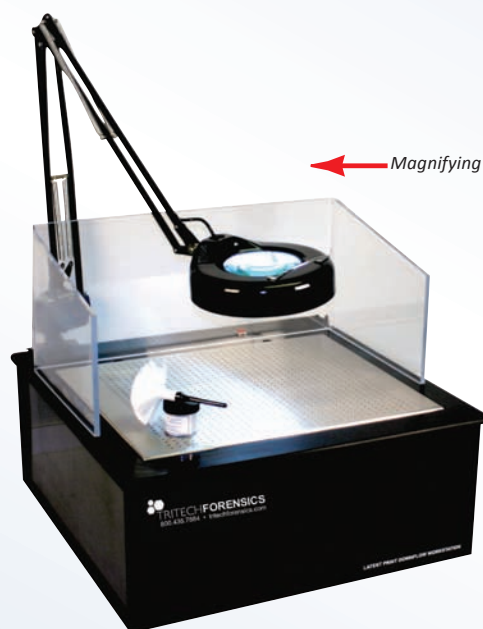


Operating Controls

- On/Off rocker switch

Design and Construction

- 160 cfm. centrifugal fan
- 24" Wide X 24" Deep X 10" High
- Weighs only 46 lbs.
- Supplied with 1 HEPA filter and 6 Technostat pre-filters
- 1-Year warranty on parts and labor



← Magnifying Lamp

← Air Guard

Reorder No.

Description

PDW-120	○	Latent Print Downflow Workstation
PDW-FILTPRE		Replacement Technostat Pre-Filters - 6/pkg
PDW-HEPA		Replacement HEPA Secondary-Filter
PDW-AG		Air Guard
PDW-ML		3X Magnifying Lamp

230/50Hz. model available. Call for pricing.



NEW ITEM

LATENT PRINT KITS



Basic 1 Standard or Magnetic Latent Print Kit - Hinged Lifters

KIT COMPONENTS

BOTH KITS CONTAIN:

- 1 ea. Copolymer Carrying Case, 8.37" L x 4.5" W x 2.62" H, with foam insert
- 12 ea. 2" x 4" Hinged Print Lifters - White
- 12 ea. 2" x 4" Hinged Print Lifters - Black
- 1 ea. 2X Shirt Pocket Folding Magnifier
- 10 ea. Nitrile Barrier Gloves (not shown)



Reorder No. CK-LPB1L

STANDARD KIT ONLY (Reorder No. CK-LPB1L):

- 1 ea. 2 oz. Jar Velvet Black Latent Print Powder
- 1 ea. 4.5" Camel Hair Latent Print Powder Brush

MAGNETIC KIT ONLY (Reorder No. CK-LPBM1L):

- 1 ea. 1 oz. Jar Regular Black Magnetic Latent Print Powder
- 1 ea. TEX Retractable Magnetic Wand



Reorder No. CK-LPBM1L

Reorder No.	Description
CK-LPB1L	Basic 1 Standard Latent Print Kit with Hinged Lifters
CK-LPBM1L	Basic 1 Magnetic Latent Print Kit with Hinged Lifters

Basic 2 Standard or Magnetic Latent Print Kit - Hinged Lifters

KIT COMPONENTS

BOTH KITS CONTAIN:

- 1 ea. Copolymer Carrying Case, 12.125" L x 7.25" W x 5.5" H, with foam insert
- 12 ea. 2" x 4" Hinged Print Lifters, White
- 12 ea. 2" x 4" Hinged Print Lifters, Black
- 1 ea. 2X Shirt Pocket Folding Magnifier
- 10 ea. Nitrile Barrier Gloves (not shown)



Reorder No. CK-LPB2L

STANDARD KIT ONLY (Reorder No. CK-LPB2L):

- 1 ea. 2 oz. Jar Velvet Black Latent Print Powder
- 1 ea. 2 oz. Jar Pure White Latent Print Powder
- 2 ea. 4.5" Camel Hair Latent Print Powder Brushes

MAGNETIC KIT ONLY (Reorder No. CK-LPBM2L):

- 1 ea. 1 oz. Jar Regular Black Magnetic Latent Print Powder
- 1 ea. 1 oz. Jar White Magnetic Latent Print Powder
- 1 ea. TEX Retractable Magnetic Wand



Reorder No. CK-LPBM2L

Reorder No.	Description
CK-LPB2L	Basic 2 Standard Latent Print Kit with Hinged Lifters
CK-LPBM2L	Basic 2 Magnetic Latent Print Kit with Hinged Lifters

TIP

These kits are available with your choice of any of our Standard or Magnetic Atomic CRP Latent Print Powder colors. To choose a color other than the ones listed, call customer service at 02 4645 7600

Basic 3 Standard or Magnetic Latent Print Kit - Hinged Lifters

KIT COMPONENTS

BOTH KITS CONTAIN:

- 1 ea. Copolymer Carrying Case, 12.125" L x 7.25" W x 5.5" H, with foam insert
- 12 ea. 2" x 4" Hinged Print Lifters - White
- 12 ea. 2" x 4" Hinged Print Lifters - Black
- 1 ea. 2X Shirt Pocket Folding Magnifier
- 10 ea. Nitrile Barrier Gloves (not shown)

STANDARD KIT ONLY (Reorder No. CK-LPB3L):

- 1 ea. 2 oz. Jar Velvet Black Latent Print Powder
- 1 ea. 2 oz. Jar Pure White Latent Print Powder
- 1 ea. 2 oz. Jar Bright Red Latent Print Powder
- 2 ea. 4.5" Camel Hair Latent Print Powder Brushes

MAGNETIC KIT ONLY (Reorder No. CK-LPBM3L):

- 1 ea. 1 oz. Jar Dual Purpose Silver/Black Magnetic Latent Print Powder
- 1 ea. 1 oz. Jar White Magnetic Latent Print Powder
- 1 ea. 1 oz. Jar Red Magnetic Latent Print Powder
- 1 ea. TEX Retractable Magnetic Wand



Reorder No. CK-LPB3L



Reorder No. CK-LPBM3L

Reorder No.	Description
CK-LPB3L	Basic 3 Standard Latent Print Kit with Hinged Lifters
CK-LPBM3L	Basic 3 Magnetic Latent Print Kit with Hinged Lifters

TIP

These kits are available with your choice of any of our Standard or Magnetic Atomic CRP Latent Print Powder colors. To choose a color other than the ones listed, call customer service at 02 4645 7600

Basic 4 Standard/Magnetic Latent Print Kit - Hinged Lifters

KIT COMPONENTS

CASE:

- 1 ea. Copolymer Carrying Case, 16.375" L x 8.625" W x 7" H, with foam insert

POWDERS:

- 1 ea. 2 oz. Jar Velvet Black Latent Print Powder
- 1 ea. 2 oz. Jar Pure White Latent Print Powder
- 1 ea. 1 oz. Jar Midnight Black Magnetic Latent Print Powder
- 1 ea. 1 oz. Jar White Magnetic Latent Print Powder

BRUSHES:

- 1 ea. TEX Retractable Magnetic Wand
- 2 ea. 4.5" Camel Hair Latent Print Powder Brushes

LIFTERS:

- 12 ea. 2" x 4" Hinged Print Lifters - White
- 12 ea. 2" x 4" Hinged Print Lifters - Black

SUPPLIES:

- 1 ea. 2X Shirt Pocket Folding Magnifier
- 10 ea. Nitrile Barrier Gloves (not shown)



Reorder No.	Description
CK-LPBC4L	Basic 4 Standard/Magnetic Latent Print Kit with Hinged Lifters

Master Fluorescent Standard or Magnetic Latent Print Kit - Hinged Lifters

BOTH KITS CONTAIN:

- 1 ea. Master Carrying Case, 17”L x 12” W x 7” H, with foam insert and divider
- 16 ea. 1.5” x 2” Hinged Print Lifters - White
- 16 ea. 1.5” x 2” Hinged Print Lifters - Black
- 16 ea. 1.5” x 2” Hinged Print Lifters - Transparent
- 16 ea. 2” x 4” Hinged Print Lifters - White
- 16 ea. 2” x 4” Hinged Print Lifters - Black
- 16 ea. 2” x 4” Hinged Print Lifters - Transparent
- 16 ea. 4” x 4” Hinged Print Lifters - White
- 16 ea. 4” x 4” Hinged Print Lifters - Black
- 16 ea. 4” x 4” Hinged Print Lifters - Transparent
- 1 ea. Shirt Pocket Long Wave 4 Watt UV Lamp, with batteries
- 1 ea. 2.5X Magnifier - 2.5” diameter
- 1 ea. Fluorescent L-Shaped Photomacrographic Scale
- 10 ea. Nitrile Barrier Gloves (not shown)



Reorder No. CK-LPMF5L

STANDARD KIT ONLY (Reorder No. CK-LPMF5L):

- 1 ea. 2 oz. Jar Black Fluorescent Latent Print Powder (fluoresces brilliant green)
- 1 ea. 2 oz. Jar White Fluorescent Latent Print Powder (fluoresces brilliant green)
- 1 ea. 2 oz. Jar Orange Fluorescent Latent Print Powder (fluoresces brilliant orange)
- 1 ea. 2 oz. Jar Red Fluorescent Latent Print Powder (fluoresces brilliant red)
- 1 ea. 2 oz. Jar Yellow Fluorescent Latent Print Powder (fluoresces brilliant yellow)
- 4 ea. 4.5” Camel Hair Latent Print Powder Brushes
- 1 ea. 6” Whisper™ Fiberglass Brush



MAGNETIC KIT ONLY (Reorder No. CK-LPMFM5L):

- 1 ea. 1 oz. Jar Black Fluorescent Latent Print Powder (fluoresces brilliant green)
- 1 ea. 1 oz. Jar White Fluorescent Latent Print Powder (fluoresces brilliant green)
- 1 ea. 1 oz. Jar Orange Fluorescent Latent Print Powder (fluoresces brilliant orange)
- 1 ea. 1 oz. Jar Red Fluorescent Latent Print Powder (fluoresces brilliant red)
- 1 ea. 1 oz. Jar Yellow Fluorescent Latent Print Powder (fluoresces brilliant yellow)
- 1 ea. TEX Retractable Magnetic Wand

Reorder No. CK-LPMFM5L

Reorder No.	Description
CK-LPMF5L	Master F5L Fluorescent Latent Print Kit with Hinged Lifters
CK-LPMFM5L	Master FM5L Fluorescent Magnetic Latent Print Kit with Hinged Lifters

TIP

These kits are available with your choice of any of our Standard Fluorescent or Fluorescent Magnetic Atomic CRP Latent Print Powder colors. To choose a color other than the ones listed, call customer service at 02 4645 7600

These kits are also available with tape & backing cards instead of hinged lifters. Please see pages 153-156 for ordering information on those kits.

Master M6L Magnetic Latent Print Kit - Hinged Lifters

KIT COMPONENTS

CASE:

- 1 ea. Master Carrying Case, 13" L x 8" W x 11" H, with foam insert and divider

POWDERS:

- 1 ea. 1 oz. Jar Midnight Black Magnetic Latent Print Powder
- 1 ea. 1 oz. Jar Gray Magnetic Latent Print Powder
- 1 ea. 1 oz. Jar White Magnetic Latent Print Powder
- 1 ea. 1 oz. Jar Red Magnetic Latent Print Powder
- 1 ea. 1 oz. Jar Silver Magnetic Latent Print Powder
- 1 ea. 1 oz. Jar Dual Purpose Silver/Black Magnetic Latent Print Powder

BRUSHES:

- 1 ea. TEX Retractable Magnetic Wand

LIFTERS:

- 12 ea. 2" x 4" Hinged Print Lifters - White
- 12 ea. 2" x 4" Hinged Print Lifters - Black

SUPPLIES:

- 1 ea. 2.5X Magnifier - 2.5" diameter
- 1 ea. L-Shaped Photomacrographic Scale
- 10 ea. Nitrile Barrier Gloves (not shown)



Reorder No.	Description
CK-LPMM6L	Master M6L Magnetic Latent Print Kit with Hinged Lifters

Master 9L Latent Print Kit - Hinged Lifters

KIT COMPONENTS

CASE:

- 1 ea. Master Carrying Case, 17" L x 12" W x 7" H, with foam insert and divider

POWDERS:

- 1 ea. 2 oz. Jar Velvet Black Latent Print Powder
- 1 ea. 2 oz. Jar Ash Gray Latent Print Powder
- 1 ea. 2 oz. Jar Pure White Latent Print Powder
- 1 ea. 2 oz. Jar Bright Red Latent Print Powder
- 1 ea. 2 oz. Jar Silver Metallic Latent Print Powder
- 1 ea. 2 oz. Jar Gold Metallic Latent Print Powder
- 1 ea. 2 oz. Jar Copper Metallic Latent Print Powder
- 1 ea. 2 oz. Jar Safe-Cracker Latent Print Powder
- 1 ea. 2 oz. Jar Dual Purpose Silver/Black Latent Print Powder

BRUSHES:

- 9 ea. 4.5" Camel Hair Latent Print Powder Brushes
- 1 ea. 6" Whisper™ Fiberglass Brush

LIFTERS:

- 16 ea. 1.5" x 2" Hinged Print Lifters - White
- 16 ea. 1.5" x 2" Hinged Print Lifters - Black
- 16 ea. 1.5" x 2" Hinged Print Lifters - Transparent
- 16 ea. 2" x 4" Hinged Print Lifters - White
- 16 ea. 2" x 4" Hinged Print Lifters - Black

- 16 ea. 2" x 4" Hinged Print Lifters - Transparent
- 16 ea. 4" x 4" Hinged Print Lifters - White
- 16 ea. 4" x 4" Hinged Print Lifters - Black
- 16 ea. 4" x 4" Hinged Print Lifters - Transparent

SUPPLIES:

- 1 ea. 2.5X Magnifier - 2.5" diameter
- 1 ea. L-Shaped Photomacrographic Scale
- 10 ea. Nitrile Barrier Gloves (not shown)



Reorder No.	Description
CK-LPM9L	Master 9L Latent Print Kit with Hinged Lifters



NEW ITEM



Basic 1 Standard or Magnetic Latent Print Kit - Tape & Backing Cards

KIT COMPONENTS

BOTH KITS CONTAIN:

- 1 ea. Copolymer Carrying Case, 8.375" L x 4.5" W x 2.625" H
- 1 ea. 2" x 360" Lifting Tape - Transparent, in plastic tube
- 1 ea. Retractable Blade Scalpel
- 1 ea. Reversible Latent Print Backing Card Pad - White, 50 cards per pad
- 1 ea. 2X Shirt Pocket Folding Magnifier
- 10 ea. Nitrile Barrier Gloves (not shown)



Reorder No. CK-LPB1T

STANDARD KIT ONLY (Reorder No. CK-LPB1T):

- 1 ea. 2 oz. Jar Velvet Black Latent Print Powder
- 1 ea. 4.5" Camel Hair Latent Print Powder Brush

MAGNETIC KIT ONLY (Reorder No. CK-LPBM1T):

- 1 ea. 1 oz. Jar Regular Black Magnetic Latent Print Powder
- 1 ea. TEX Retractable Magnetic Wand



Reorder No. CK-LPBM1T

Reorder No.	Description
CK-LPB1T	Basic 1 Standard Latent Print Kit with Tape & Backing Cards
CK-LPBM1T	Basic 1 Magnetic Latent Print Kit with Tape & Backing Cards

Basic 2 Standard or Magnetic Latent Print Kit- Tape & Backing Cards

KIT COMPONENTS

BOTH KITS CONTAIN:

- 1 ea. Copolymer Carrying Case, 12.125" L x 7.25" W x 5.5" H, with foam insert
- 1 ea. 2" x 360" Lifting Tape - Transparent, in plastic tube
- 1 ea. Retractable Blade Scalpel
- 1 ea. Reversible Latent Print Backing Card Pad - White, 50 cards/pad
- 1 ea. Reversible Latent Print Backing Card Pad - Black, 50 cards/pad
- 1 ea. 2X Shirt Pocket Folding Magnifier
- 10 ea. Nitrile Barrier Gloves (not shown)



Reorder No. CK-LPB2T

STANDARD KIT ONLY (Reorder No. CK-LPB2T):

- 1 ea. 2 oz. Jar Velvet Black Latent Print Powder
- 1 ea. 2 oz. Jar Pure White Latent Print Powder
- 2 ea. 4.5" Camel Hair Latent Print Powder Brushes

MAGNETIC KIT ONLY (Reorder No. CK-LPBM2T):

- 1 ea. 1 oz. Jar Regular Black Magnetic Latent Print Powder
- 1 ea. 1 oz. Jar White Magnetic Latent Print Powder
- 1 ea. TEX Retractable Magnetic Wand



Reorder No. CK-LPBM2T

Reorder No.	Description
CK-LPB2T	Basic 2 Standard Latent Print Kit with Tape & Backing Cards
CK-LPBM2T	Basic 2 Magnetic Latent Print Kit with Tape & Backing Cards

Basic 3 Standard or Magnetic Latent Print Kit -

Tape & Backing Cards



KIT COMPONENTS

BOTH KITS CONTAIN:

- 1 ea. Copolymer Carrying Case, 12.125" L x 7.25" W x 5.5" H, with foam insert
- 1 ea. 2" x 360" Lifting Tape - Transparent, in plastic tube
- 1 ea. Retractable Blade Scalpel
- 1 ea. Reversible Latent Print Backing Card Pad - White, 50 cards/pad
- 1 ea. Reversible Latent Print Backing Card Pad - Black, 50 cards/pad
- 1 ea. 2X Shirt Pocket Folding Magnifier
- 10 ea. Nitrile Barrier Gloves (not shown)



Reorder No. CK-LPB3T

STANDARD KIT ONLY (Reorder No. CK-LPB3T):

- 1 ea. 2 oz. Jar Velvet Black Latent Print Powder
- 1 ea. 2 oz. Jar Pure White Latent Print Powder
- 1 ea. 2 oz. Jar Bright Red Latent Print Powder
- 2 ea. 4.5" Camel Hair Latent Print Powder Brushes



Reorder No. CK-LPBM3T

MAGNETIC KIT ONLY (Reorder No. CK-LPBM3T):

- 1 ea. 1 oz. Jar Dual Purpose Silver/Black Magnetic Latent Print Powder
- 1 ea. 1 oz. Jar White Magnetic Latent Print Powder
- 1 ea. 1 oz. Jar Red Magnetic Latent Print Powder
- 1 ea. TEX Retractable Magnetic Wand

Reorder No.	Description
CK-LPB3T	Basic 3 Standard Latent Print Kit with Tape & Backing Cards
CK-LPBM3T	Basic 3 Magnetic Latent Print Kit with Tape & Backing Cards

CK-LPB3T	Basic 3 Standard Latent Print Kit with Tape & Backing Cards
CK-LPBM3T	Basic 3 Magnetic Latent Print Kit with Tape & Backing Cards

TIP

These kits are available with your choice of any of our Standard or Magnetic Atomic CRP Latent Print Powder colors. To choose a color other than the ones listed, call customer service at 02 4645 7600

Basic 4 Standard/Magnetic Latent Print Kit - Tape & Backing Cards

KIT COMPONENTS

CASE:

- 1 ea. Copolymer Carrying Case, 16.375" L x 8.625" W x 7" H, with foam insert

POWDERS:

- 1 ea. 2 oz. Jar Velvet Black Latent Print Powder
- 1 ea. 2 oz. Jar Pure White Latent Print Powder
- 1 ea. 1 oz. Jar Midnight Black Magnetic Latent Print Powder
- 1 ea. 1 oz. Jar White Magnetic Latent Print Powder

BRUSHES:

- 1 ea. TEX Retractable Magnetic Wand
- 2 ea. 4.5" Camel Hair Latent Print Powder Brushes

TAPE & BACKING CARDS:

- 1 ea. 2" x 360" Lifting Tape - Transparent, in plastic tube
- 1 ea. Reversible Latent Print Backing Card Pad - White, 50 cards/pad
- 1 ea. Reversible Latent Print Backing Card Pad - Black, 50 cards/pad

**SUPPLIES:**

- 1 ea. Retractable Blade Scalpel
- 1 ea. 2X Shirt Pocket Folding Magnifier
- 10 ea. Nitrile Barrier Gloves (not shown)

Reorder No.	Description
CK-LPBC4T	Basic 4 Combination Latent Print Kit with Tape & Backing Cards

CK-LPBC4T	Basic 4 Combination Latent Print Kit with Tape & Backing Cards
-----------	--

BOTH KITS CONTAIN:

- 1 ea. Master Carrying Case, 17" L x 12" W x 7" H, with foam insert and divider
- 1 ea. Shirt Pocket Long Wave 4 Watt UV Lamp, with batteries
- 1 ea. 1.5" x 360" Lifting Tape - Transparent, in plastic tube
- 1 ea. 2" x 360" Lifting Tape - Transparent, in plastic tube
- 1 ea. 4" x 360" Lifting Tape - Transparent, in plastic tube
- 1 ea. Retractable Blade Scalpel
- 1 ea. Reversible Latent Print Backing Card Pad - White, 50 cards/pad
- 1 ea. Reversible Latent Print Backing Card Pad - Black, 50 cards/pad
- 1 ea. 2.5X Magnifier - 2.5" diameter
- 1 ea. Fluorescent L-Shaped Photomacrographic Scale
- 10 ea. Nitrile Barrier Gloves (not shown)



Reorder No. CK-LPMF5T

STANDARD KIT ONLY (Reorder No. CK-LPMF5T):

- 1 ea. 2 oz. Jar Black Fluorescent Latent Print Powder (fluoresces brilliant green)
- 1 ea. 2 oz. Jar White Fluorescent Latent Print Powder (fluoresces brilliant green)
- 1 ea. 2 oz. Jar Orange Fluorescent Latent Print Powder (fluoresces brilliant orange)
- 1 ea. 2 oz. Jar Red Fluorescent Latent Print Powder (fluoresces brilliant red)
- 1 ea. 2 oz. Jar Yellow Fluorescent Latent Print Powder (fluoresces brilliant yellow)
- 4 ea. 4.5" Camel Hair Latent Print Powder Brushes
- 1 ea. 6" Whisper™ Fiberglass Brush



Reorder No. CK-LPMFM5T

MAGNETIC KIT ONLY

(Reorder No. CK-LPMFM5T):

- 1 ea. 1 oz. Jar Black Fluorescent Latent Print Powder (fluoresces brilliant green)
- 1 ea. 1 oz. Jar White Fluorescent Latent Print Powder (fluoresces brilliant green)
- 1 ea. 1 oz. Jar Orange Fluorescent Latent Print Powder (fluoresces brilliant orange)
- 1 ea. 1 oz. Jar Red Fluorescent Latent Print Powder (fluoresces brilliant red)
- 1 ea. 1 oz. Jar Yellow Fluorescent Latent Print Powder (fluoresces brilliant yellow)
- 1 ea. TEX Retractable Magnetic Wand

Reorder No. Description

CK-LPMF5T	Master F5T Fluorescent Latent Print Kit with Tape & Backing Cards
CK-LPMFM5T	Master FM5T Fluorescent Magnetic Latent Print Kit with Tape & Backing Cards

TIP

These kits are available with your choice of any of our Standard Fluorescent or Fluorescent Magnetic Atomic CRP Latent Print Powder colors. To choose a color other than the ones listed, call customer service at 02 4645 7600

These kits are also available with hinged lifters instead of tape & backing cards. Please see pages 149 - 152 for ordering information for those kits.

Master M6T Magnetic Latent Print Kit - Tape & Backing Cards



KIT COMPONENTS

CASE:

- 1 ea. Master Carrying Case, 13" L x 8" W x 11" H, with foam insert and divider

POWDERS:

- 1 ea. 1 oz. Jar Midnight Black Magnetic Latent Print Powder
- 1 ea. 1 oz. Jar Gray Magnetic Latent Print Powder
- 1 ea. 1 oz. Jar White Magnetic Latent Print Powder
- 1 ea. 1 oz. Jar Red Magnetic Latent Print Powder
- 1 ea. 1 oz. Jar Silver Magnetic Latent Print Powder
- 1 ea. 1 oz. Jar Dual Purpose Silver/Black Magnetic Latent Print Powder

BRUSHES:

- 1 ea. TEX Retractable Magnetic Wand

TAPE & BACKING CARDS:

- 1 ea. 1.5" x 360" Lifting Tape - Transparent, in plastic tube
- 1 ea. 2" x 360" Lifting Tape - Transparent, in plastic tube
- 1 ea. 4" x 360" Lifting Tape - Transparent, in plastic tube
- 1 ea. Reversible Latent Print Backing Card Pad - White, 50 cards/pad



- 1 ea. Reversible Latent Print Backing Card Pad - Black, 50 cards/pad

SUPPLIES:

- 1 ea. Retractable Blade Scalpel
- 1 ea. 2.5X Magnifier - 2.5" diameter
- 1 ea. L-Shaped Photomacrographic Scale
- 10 ea. Nitrile Barrier Gloves (not shown)

Reorder No. Description

CK-LPMM6T Master M6T Magnetic Latent Print Kit with Tape & Backing Cards

Master 9T Latent Print Kit - Tape & Backing Cards

KIT COMPONENTS

CASE:

- 1 ea. Master Carrying Case, 17" L x 12" W x 7" H, with foam insert and divider

POWDERS:

- 1 ea. 2 oz. Jar Velvet Black Latent Print Powder
- 1 ea. 2 oz. Jar Ash Gray Latent Print Powder
- 1 ea. 2 oz. Jar Pure White Latent Print Powder
- 1 ea. 2 oz. Jar Bright Red Latent Print Powder
- 1 ea. 2 oz. Jar Silver Metallic Latent Print Powder
- 1 ea. 2 oz. Jar Gold Metallic Latent Print Powder
- 1 ea. 2 oz. Jar Copper Metallic Latent Print Powder
- 1 ea. 2 oz. Jar Safe-Cracker Latent Print Powder
- 1 ea. 2 oz. Jar Dual Purpose Silver/Black Latent Print Powder

BRUSHES:

- 9 ea. 4.5" Camel Hair Latent Print Powder Brushes
- 1 ea. 6" Whisper Fiberglass Brush

TAPE & BACKING CARDS:

- 1 ea. 1.5" x 360" Lifting Tape - Transparent, in plastic tube
- 1 ea. 2" x 360" Lifting Tape - Transparent, in plastic tube
- 1 ea. 4" x 360" Lifting Tape - Transparent, in plastic tube



- 1 ea. Reversible Latent Print Backing Card Pad - White, 50 cards/pad

- 1 ea. Reversible Latent Print Backing Card Pad - Black, 50 cards/pad

SUPPLIES:

- 1 ea. Retractable Blade Scalpel
- 1 ea. 2.5X Magnifier - 2.5" diameter
- 1 ea. L-Shaped Photomacrographic Scale
- 10 ea. Nitrile Barrier Gloves (not shown)

Reorder No. Description

CK-LPM9T Master 9T Latent Print Kit with Tape & Backing Cards

BOTH KITS CONTAIN:

- 1 ea. Master Carrying Case, 15" L x 16" W x 8" H, with foam insert and divider
- 1 ea. 2 oz. Jar Velvet Black Latent Print Powder
- 1 ea. 2 oz. Jar Ash Gray Latent Print Powder
- 1 ea. 2 oz. Jar Pure White Latent Print Powder
- 1 ea. 2 oz. Jar Bright Red Latent Print Powder
- 1 ea. 2 oz. Jar Silver Metallic Latent Print Powder
- 1 ea. 2 oz. Jar Gold Metallic Latent Print Powder
- 1 ea. 2 oz. Jar Copper Metallic Latent Print Powder
- 1 ea. 2 oz. Jar Safe-Cracker Latent Print Powder
- 1 ea. 2 oz. Jar Dual Purpose Silver/Black Latent Print Powder
- 1 ea. 1 oz. Jar Magnetic Midnight Black Latent Print Powder
- 1 ea. 1 oz. Jar Gray Magnetic Latent Print Powder
- 1 ea. 1 oz. Jar White Magnetic Latent Print Powder
- 1 ea. 1 oz. Jar Red Magnetic Latent Print Powder
- 1 ea. 1 oz. Jar Silver Magnetic Latent Print Powder
- 1 ea. 1 oz. Jar Dual Purpose Silver/Black Magnetic Latent Print Powder
- 9 ea. 4.5" Camel Hair Latent Print Powder Brushes
- 1 ea. 6" Whisper™ Fiberglass Brush
- 1 ea. TEX Retractable Magnetic Wand
- 1 ea. 2.5X Magnifier - 2.5" diameter
- 1 ea. L-Shaped Photomacrographic Scale
- 10 ea. Nitrile Barrier Gloves (not shown)



Reorder No. CK-LPMC15L

HINGED LIFTERS KIT ONLY (Reorder No. CK-LPMC15L):

- 16 ea. 1.5" x 2" Hinged Print Lifters - White
- 16 ea. 1.5" x 2" Hinged Print Lifters - Black
- 16 ea. 1.5" x 2" Hinged Print Lifters - Transparent
- 16 ea. 2" x 4" Hinged Print Lifters - White
- 16 ea. 2" x 4" Hinged Print Lifters - Black
- 16 ea. 2" x 4" Hinged Print Lifters - Transparent
- 16 ea. 4" x 4" Hinged Print Lifters - White
- 16 ea. 4" x 4" Hinged Print Lifters - Black
- 16 ea. 4" x 4" Hinged Print Lifters - Transparent



Reorder No. CK-LPMC15T

TAPE & BACKING CARDS KIT ONLY (Reorder No. CK-LPMC15T):

- 1 ea. 1.5" x 360" Lifting Tape - Transparent, in plastic tube
- 1 ea. 2" x 360" Lifting Tape - Transparent, in plastic tube
- 1 ea. 4" x 360" Lifting Tape - Transparent, in plastic tube
- 1 ea. Retractable Blade Scalpel
- 1 ea. Reversible Latent Print Backing Card Pad - White, 50 cards/pad
- 1 ea. Reversible Latent Print Backing Card Pad - Black, 50 cards/pad

Reorder No. Description

CK-LPMC15L	Master C15L Combination Latent Print Kit with Hinged Lifters
CK-LPMC15T	Master C15T Combination Latent Print Kit with Tape & Backing Cards

Master AA or SEM Homicide Investigation Kits

This three-tier kit is specifically designed for homicide investigators and contains all necessary components for developing and lifting latent prints, taking elimination prints, and packaging evidence. In addition to the comprehensive investigation components, our Master Homicide Investigation Kits also contain fifteen individual forensic kits: 5 ea. Gunshot Residue Collection Kits; 5 ea. DNA Blood Stain Collection Kits; 5 ea. Suspect DNA Buccal Swab Collection Kits



KIT COMPONENTS

CASE:

- 1 ea. Master Carrying Case, 21"L x 14" W x 10" H, with foam insert and divider

LATENT PRINT DEVELOPMENT:

- 1 ea. 2 oz. Jar Velvet Black Latent Print Powder
- 1 ea. 2 oz. Jar Silver/Black Latent Print Powder
- 1 ea. 1 oz. Jar Black Magnetic Latent Print Powder
- 1 ea. 1 oz. Jar Silver/Black Magnetic Latent Print Powder
- 1 ea. TEX Retractable Magnetic Powder Wand
- 2 ea. 4.5" Camel Hair Latent Print Powder Brushes
- 1 ea. 6" Whisper Fiberglass Brushes
- 1 ea. 2" x 360" Lifting Tape - Transparent, in plastic tube
- 1 ea. 2" x 360" Lifting Tape - Frosted, in plastic tube
- 12 ea. 2" x 4" Hinged Print Lifters - White
- 12 ea. 2" x 4" Hinged Print Lifters - Black
- 1 ea. Reversible Latent Print Backing Card Pad - White, 50 cards/pad
- 1 ea. Reversible Latent Print Backing Card Pad - Black, 50 cards/pad

DNA COLLECTION:

- 5 ea. DNA Blood Stain Collection Kits
- 5 ea. Suspect DNA Buccal Swab Collection Kits

GUNSHOT RESIDUE COLLECTION:

- 5 ea. 12 Swab GSR-AA Collection Kits (CK-IMHA) OR
- 5 ea. 4 Stub GSR-SEM(C) Collection Kits (CK-IMHS)

FINGERPRINTING:

- 1 ea. 2" Elimination Print Kit

EVIDENCE COLLECTION:

- 1 ea. 8 oz. Luminol Blood Detection Reagent
- 1 ea. 2.5X Magnifier - 2.5" diameter
- 1 ea. Pocket Penlight - with batteries
- 1 ea. 6" Scissors
- 1 ea. 16 ft. Tape Measure
- 1 ea. Super-Stick® Evidence Tape - 1" wide
- 1 ea. Adhesive Backed Photo Scale Tape, 1" wide
- 1 ea. Pocket Notebook
- 10 ea. Nitrile Barrier Gloves (not shown)
- 12 ea. Evidence Tags
- 12 ea. Evidence Labels
- 10 ea. Evidence Security Bags - 5" x 8"
- 10 ea. Evidence Security Bags - 9" x 12"
- 10 ea. Paper Evidence Security Bags - 7" W x 4.5" D x 13.75" L

Reorder No.	Description
CK-IMHA	AA Master Homicide Investigation Kit
CK-IMHS	SEM Master Homicide Investigation Kit

Master Crime Scene Investigation Kit



This three-tier Master Crime Scene Investigation Kit is the most extensive investigation kit we offer. Our kit is supplied with all of the necessary components to develop and lift latent prints, collect and preserve evidence, and take fingerprints from subjects at a crime scene. This kit is supplied with several latent print powders and both lifting tapes with backing cards and hinged lifters.



KIT COMPONENTS

CASE:

- 1 ea. Master Carrying Case, 21" L x 14" W x 10" H, with foam insert and divider

LATENT PRINT DEVELOPMENT:

- 1 ea. 2 oz. Jar Velvet Black Latent Print Powder
- 1 ea. 2 oz. Jar Dual Purpose Silver/Black Latent Print Powder
- 1 ea. 1 oz. Jar Midnight Black Magnetic Latent Print Powder
- 1 ea. 1 oz. Jar Dual Purpose Silver/Black Magnetic Latent Print Powder
- 1 ea. Retractable Magnetic Wand
- 2 ea. 4.5" Camel Hair Latent Print Powder Brushes
- 1 ea. 6" Whisper Fiberglass Brushes
- 1 ea. 2" x 360" Lifting Tape - Transparent, in plastic tube
- 1 ea. 2" x 360" Lifting Tape - Frosted, in plastic tube
- 12 ea. 2" x 4" Hinged Print Lifters - White
- 12 ea. 2" x 4" Hinged Print Lifters - Black
- 1 ea. Reversible Latent Print Backing Card Pad - White, 50 cards/pad
- 1 ea. Reversible Latent Print Backing Card Pad - Black, 50 cards/pad Latent Print

CHEMICAL DEVELOPMENT:

- 1 ea. 8 oz. Ninhydrin Pump Spray
- 10 ea. Press & Fume™ Cyanoacrylate Developer

FINGERPRINTING:

- 1 ea. Single Fingerprinting Cardholder
- 1 ea. Porelon® Fingerprint Pad - 5" x 2.5"
- 50 ea. Criminal Fingerprint Record Cards
- 40 ea. Ink Remover Towelettes

EVIDENCE COLLECTION:

- 1 ea. 2.5X Magnifier - 2.5" diameter
- 1 ea. Ridge Counter
- 1 ea. Pocket Penlight with batteries
- 1 ea. 6" Scissors
- 1 ea. 16 ft. Tape Measure
- 1 ea. Super-Stick® Evidence Tape - 1" wide
- 1 ea. Adhesive Backed Photo Scale Tape - 1" wide
- 1 ea. Pocket Notebook
- 20 ea. Nitrile Barrier Gloves
- 12 ea. Evidence Tags
- 12 ea. Evidence Labels
- 10 ea. Evidence Security Bags - 5" x 8"
- 10 ea. Evidence Security Bags - 9" x 12"

Reorder No.	Description
CK-IMCS	Master Crime Scene Investigation Kit

Latent Print Collection - Latent Print Kits

Master Crime Scene Kit Cases



These tough Kit Cases are the same cases we provide in our Master Evidence Collection Kits. They are made from a specifically-formulated polymer resin which is virtually indestructible and comes with a lifetime warranty.

All Master Crime Scene Kit Cases are provided with Hex-A-Pluck polyurethane shock absorbing foam inserts, allowing you to shape the foam to conform to and protect the item or components you put in our cases.

Our cases are so tough they stand up to environmental conditions encountered by the U.S. Military throughout the world. They can even withstand the including being accidentally run over by a Humvee!



FEATURES

- **Lifetime Warranty** - We will replace or repair, at no charge, any case damaged under normal use
- **Closes Tightly** - Will defeat the sand and dust in a desert environment
- **Watertight** - Down to 400 feet
- **Dent and Shatterproof** - Lighter and stronger than other similar cases
- **Designed** - Meets Mil-C-4150 specifications
- **Externally Interlocking-Contoured Design** - Provides additional strength and stability when stacking
- **Pressure Equalizing Valve** - Opens easily even after changes in altitude or temperature
- **Rust and corrosion proof**
- **Hex-A-Pluck** - Most models supplied with dark gray Hex-A-Pluck polyurethane shock absorbing foam which easily conforms to any item placed in the case
- **Secure** - Can be locked with padlocks for security when traveling
- **ABS Plastic Latches**
- **Tough** - Spring loaded, unbreakable padded handle
- **Withstands extreme temperatures** - From -65 ° to 165 ° F
- **0.25" Neoprene O-Ring-Seals** - watertight-airtight-dustproof
- **Watertight** - down to 400 feet





Contents not included - Shown without compartment lid

(A) Reorder Nos. CS-151608 and CS-151608D

Outer Dimensions: 15" L x 16" W x 8" H
 Interior Dimensions: 14" L x 14" W x 7" H
 Weight Empty: 8.1 lbs.
 Floats Containing: 50 lbs.

(B) Reorder Nos. CS-211410 and CS-211410D

Outer Dimensions: 21" L x 14" W x 10" H
 Interior Dimensions: 20" L x 12" W x 9" H
 Weight Empty: 10.5 lbs.
 Floats Containing: 78 lbs.

(C) Reorder Nos. CS-171207 and CS-171207D

Outer Dimensions: 17" L x 12" W x 7" H
 Interior Dimensions: 16" L x 10" W x 6" H
 Weight Empty: 5.6 lbs.
 Floats Containing: 35 lbs.

(D) Reorder Nos. CS-391507

Outer Dimensions: 39" L x 15" W x 7" H
 Interior Dimensions: 38" L x 13" W x 6" H
 Weight Empty: 13 lbs.
 Floats Containing: 105 lbs.

(E) Shown on next page

Shown with compartment lid divider



Contents not included - Shown with compartment lid divider



D

The case shown to the left is the only case not supplied with Hex-A-Pluck brand foam; however, the foam supplied can be easily cut using a razor knife to secure and protect any item placed in the case.

Reorder No.	Description
-------------	-------------

CS-151608D	(A)	Master Crime Scene Kit Case K15D - With Divider
CS-151608	(A)	Master Crime Scene Kit Case K15 - No Divider
CS-211410D	(B)	Master Crime Scene Kit Case K21D - With Divider
CS-211410	(B)	Master Crime Scene Kit Case K21 - No Divider
CS-171207D	(C)	Master Crime Scene Kit Case K17D - With Divider
CS-171207	(C)	Master Crime Scene Kit Case K17 - No Divider
CS-391507	(D)	Master Crime Scene Kit Case K39

(E) Reorder Nos. CS-130811 and CS-130811D

Outer Dimensions: 13" L x 8" W x 11" H
 Interior Dimensions: 12" L x 6" W x 10" H
 Weight Empty: 3.5 lbs.
 Floats Containing: 25 lbs.

Shown with compartment lid divider



Reorder No.		Description
CS-130811D	(E)	Master Crime Scene Kit Case K13D - With Divider
CS-130811	(E)	Master Crime Scene Kit Case K13 - No Divider

Basic Crime Scene Kit Cases

Our Basic Crime Scene Kit Cases are constructed of sturdy copolymer and are the same carrying cases we supply with our Basic Fingerprint, Thief Detection, and Latent Print kits.

Most of these cases can be purchased with or without our Hex-A-Pluck foam inserts, to secure any items you place in the case. Ideal for creating a customized kit.

Reorder Nos. CS-120705 and CS-120705F

Small Case Dimensions: 12" L x 7.25" W x 5.50" H

Reorder Nos. CS-160807 and CS-160807F

Medium Case Dimensions: 16.3" L x 8.6" W x 7" H

Reorder No. CS-191110

Large Case Dimensions: 19" L x 11.5" W x 10.5" H



Reorder No.	Description
CS-120705	Small Copolymer Carrying Case - no foam insert
CS-120705F	Small Copolymer Carrying Case - with foam insert
CS-160807	Medium Copolymer Carrying Case - no foam insert
CS-160807F	Medium Copolymer Carrying Case - with foam insert
CS-191110	Large Copolymer Carrying Case - no foam insert

Available from : **SSPA +612 4645 7600** www.sspa.net.au