

SSPA



DUTY GEAR CATALOGUE

NOTE:

Product availability may vary from time to time,
This Catalogue should only be used as a guide, we are not able to list all the products available from each manufacturer.

CONTENTS

CONDURA vs NYLON	4
DUTY BELTS	5
KEEPERS & KEY HOLDERS	6
HOLSTERS	7
COMMS DEVICES	9
GAS MASK CARRY POUCHES	11
ACCESSORY POUCHES	12
RESTRAINT CARRY POUCHES	14
AMMUNITION CARRY POUCHES	15
DEFENSIVE WEAPON POUCHES	16
FLASHLIGHT CARRY POUCHES	17
AEROSOL CARRY POUCHES	18
EMERGENCY CARRY POUCHES	19
SPECIALIST ITEMS	20
MULTIPLE CARRY PACKS	23
BACK PACKS	24
CARRY BAGS	25
TACTICAL SLINGS	27
VESTS	28

How does Cordura® measure up against other Nylon or Polyester brands?

Cordura® is one of the most versatile fabrics ideally suited across a whole range of Law Enforcement & military end uses.

Cordura® provides endurance and rugged durability for equipment exposed to extreme conditions and is **resistant to cuts, tears and scuffs**.

Ounce for ounce, Cordura® is more durable than other fabrics

When costs and durability based equipment for different body shape & sizes is what your department is looking for, then look no further than CORDURA® Law Enforcement Duty gear

The fabrics below have been tested by the Modified Wyzenbeek abrasion test.

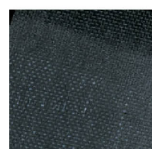
Score: (1= Highest rating, 5=Lowest rating)

Technical specifications & operational features between the Cordura Deluxe Duty Belt & another USA brand of duty belt	CORDURA	OTHER BRANDS
Durability rating	1	3
Accessibility for emergency removal by officer	1	2
Discoloration/fading after field use (3 years time period)	1	4
Attachment of Accessory pouches & cases	1	4
Weight distribution (including equipment)	1	3
Top & bottom inner tube (float system)	1	na
Wear & Tear (abrasion) to officer uniform (i.e. slacks/pants)	1	4
Waist Moulding feature capacity for officer	1	na
Officer Comfort rating	1	3
Unisex rating (Comparison test by sml/med and lge size officers)	1	3

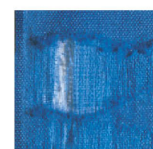
What makes Cordura® products the most widely preferred issue in Law Enforcement agencies around the world?

- ✓ Cordura®, a high-performance fabric resistant to abrasions, tears, and scuffs
- ✓ Cordura® for maximum durability
- ✓ Cordura® stands for durability
- ✓ 2 x more durable than standard nylon
- ✓ 3 x more durable than polyester
- ✓ 10 x more durable than cotton duck

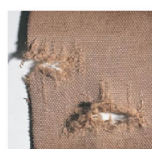
How does Cordura® Measure Up for Abrasion?



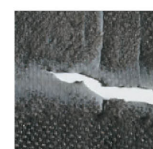
Cordura® After 3,000 cycles



Nylon after 1,000 cycles



Cotton/Nylon after 700 cycles



Polyester/Nylon after 700 cycles

The fabrics above have been tested by the Modified Wyzenbeek abrasion test. This is a sandpaper abrasion test measured in cycles.



Cordura® is a registered trademark for durable fabrics.



email: products@sspa.au

web: www.sspa.net.au

**INNER BELT**Velcro fastening (Smooth Inner) **C-20202**

- Velcro wrap around strip all around the belt.
- Smooth Velcro liner.
- Moulds onto your own body shape.
- 1.5 inch wide

INNER BELT**C-20202-1** Velcro fastening (Rough Inner)

- Velcro wrap around strip all around the belt.
- Rough Velcro liner.
- Moulds onto your own body shape.
- 1.5 inch wide

**INNER BELT**With retainer loop (Smooth Inner) **C-20202-2**

- Velcro strip around the belt with plastic retainer.
- Smooth Velcro liner.
- Moulds onto your own body shape.
- 1.5 inch wide

DUTY BELT**C-20111** Retention Locking Buckle

- Durable, 360 degree comfort.
- Composite Ergo 2 inch belt with quick release buckle Level 3 Point buckle.
- EPD Ergonomic design with EVA padding.
- Smooth Velcro liner.
- Moulds onto your own body shape.
- 2 ¼ inch wide

**INNER BELT**Basket weave (Smooth Inner) **C-20205**

- Velcro strip all around the belt.
- Smooth Velcro liner.
- Moulds onto your own body shape.
- Basket weave look.
- 1.5 inch wide

BELT WORKLOAD**C-20106** Quick Release Clip (Smooth Inner)

- Velcro strip all around the belt.
- Smooth Velcro liner.
- Added Quick Release Clip/fastening.
- 1.1/4 inch wide





KEEPER

With Handcuff Key (std) **C-22100**

- Designed to lock the duty belt and inner belt together.
- Added strength, no glare "TAC-LOK" snaps
- Universal handcuff key attached.
- Key suits Peerless, American Hand cuff, Hiatt models and many more.

C-22100

KEEPERS X4

- Designed to lock the duty belt and inner belt together.
- Added strength, no glare "TAC-LOK" snaps
- Comes in packs of 4



KEY HOLDER (std)

C-21500



- Can hold up to multiple keys and key rings
- One way locking mechanism (Hard anodized material)
- Single hand operation
- Attached with a keeper
- Added strength, no glare "TAC-LOK" snaps

C-21510

KEY HOLDER (silent - std)

- Can hold up to multiple keys and key rings
- One way locking mechanism (Hard anodized material)
- Wrap-around cover for noise reduction
- Comes with keeper
- Added strength, no glare "TAC-LOK" snaps



KEY HOLDER (silent - wide)

C-21510 - 1



- Can hold up to multiple keys and key rings
- One way locking mechanism (Hard anodized material)
- Wrap-around cover for noise reduction
- Comes with keeper
- Added strength, no glare "TAC-LOK" snaps



HOLSTER Slide / Pancake REVOLVER

C - 20417

- Designed for 4 to 6 inch barrels
- Maximum comfort, optimum concealment, minimum thickness.
- Velcro adjustable retention strap and thumb break
- Reversible belt loop fits belts up to 1.5inch wide
- Carry gun at butt forward angle Left & right hand fitting.

C -20566

HOLSTER DUTY / Adjustable REVOLVER



- Laminated panel curves to keep the gun firmly in place
- 5x tensioning screws for multiple adjustment positions
- Twin secure 'thumb break'
- Designed to suit universal 4 to 6 inch barrels
- Contoured foam insert specially designed for 4 to 6 inch barrels
- Velcro adjustable retention strap.



HOLSTER DUTY / Fixed REVOLVER

C - 20566 - 1

- Designed specifically K frame revolvers.
- Contoured foam insert specially designed
- Press stub retention strap.
- Laminated panel curves to keep the gun firmly in place
- 5x tensioning screws for multiple adjustment positions
- Rear strap feature for added retention
- Twin secure 'thumb break'

C - 20641

HOLSTER THIGH DUTY / Adjustable REVOLVER



- Designed for 4 to 6 inch barrels
- Quick release buckle system
- Thigh contoured plate + rubberised straps
- Multi-positioning adjustment panel
- Contoured foam insert specially designed
- Velcro adjustable retention strap.
- Laminated panel curves to keep the gun firmly in place
- 5x tensioning screws for multiple adjustment positions
- Twin secure 'thumb break'



HOLSTER Slide / Pancake SEMI AUTO

C - 20416

- Designed for 4.5 to 5 inch barrels
- Maximum comfort, optimum concealment, minimum thickness.
- Velcro adjustable retention strap and thumb break
- Reversible belt loop fits belts up to 1 1/2"
- Carry gun at butt forward angle Left & Right hand fitting.



HOLSTER HIP / Belt SEMI AUTO

C - 1051 - 5

- Designed for 4.5 to 5 inch barrels
- Twin press stud feature with added Velcro retention fastens directly onto belt.
- Close to the body-carry position
- Twin secure 'thumb break'

C - 20566 - 4

HOLSTER HIGH RIDE SEMI AUTO

- Designed for 4.5 to 5 inch barrels
- Twin press stud feature with added Velcro retention fastens directly onto belt.
- Close to the body-carry position
- Twin secure 'thumb break'
- Jacket slot auto design.
- Laminated panel curves to retention the weapon.



HOLSTER THIGH Universal SEMI AUTO

C - 20606

- Designed for LG barrel
- Quick release buckle system
- Rubberised straps
- Multi-positioning adjustment feature (fits to belt to thigh)
- Tactical magazine case located on the front of the holster.
- Velcro adjustable retention strap.
- Laminated panel curves to keep the gun firmly in place
- Twin secure 'thumb break'

C - 20640

HOLSTER THIGH Locking SEMI AUTO

- Designed for Med-LG barrel
- Quick release buckle system
- Rubberised straps
- Contoured & padded plate
- Tactical magazine case located on the front of the holster.

- Velcro adjustable retention strap.
- Laminated panel curves to keep the gun firmly in place
- Twin secure 'thumb break'



**RADIO CASE****C - 21300****Colour:** Black**Size:** 11cm (L) x 7.5cm (W) x 3.5cm (H)
4.33" (L) x 2.30" (W) x 1.38" (H)

- Attaches and carried horizontal, vertical or angle position
- Slide on or snap attachment onto belt.
- Elasticated sides for added room.
- QRC (Quick release clip) with elasticated fastening over feature.
- Can be added to existing carry systems.

C - 21320**RADIO CASE UNIVERSAL****Colour:** Black**Size:** 15cm (L) x 7.0cm (H) x 7.0cm (W) max to 30Kg
5.90" (L) x 2.75" (H) x 2.75" (W) max to 30Kg

- Attaches and carried horizontal, vertical or angle positions.
- Slide on or snap attachment onto belt.
- Universal adjustments straps to fit most types.
- Locking press stud with elasticated fastening over feature.
- Can be added to existing carry systems.

**C - 22IPAD****TABLET CASE****Colour:** Black**Size:** 29cm (L) x 3cm (H) x 22cm (W)
11.42" (L) x 1.81" (H) x 8.66" (W)

- For many tablet sizes and shapes
- New design to give you added protection and security.
- EVA inside prevent any abrasions.
- Lined with soft fabric on the inside
- Flap with adjust Velcro tape.
- Molle systems on outer can be attached to existing carry bag.
- It can be attached on tactical backpack.
- Lightweight & high quality



**MOBILE PHONE CASE (SMALL)****C - 21620****Colour:** Black**Size:** 11cm (L) x 3cm (H) x 5cm (W)
4.33" (L) x 1.20" (H) x 1.96" (W)

- Attaches and carried horizontal, vertical or angle positions.
- Slide on or snap attachment onto belt.
- Protective lining with added padding.
- Velcro fastening over feature.
- Can be added to existing carry systems.

C - 21630**MOBILE PHONE CASE (LARGE)****Colour:** Black**Size:** 15cm (L) x 3cm (H) x 5cm (W)
5.90" (L) x 1.18" (H) x 1.96" (W)

- Attaches and carried horizontal, vertical or angle positions.
- Slide on or snap attachment onto belt.
- Protective lining with added padding.
- Velcro fastening over feature.
- Can be added to existing carry systems.

**MOBILE PHONE CASE (WIDE)****C - 21610****Colour:** Black**Size:** 11cm (L) x 3cm (H) x 6.5cm (W)
4.33" (L) x 1.18" (H) x 2.56" (W)

- Attaches and carried horizontal, vertical or angle positions.
- Slide on or snap attachment onto belt.
- Protective lining with added padding.
- Velcro fastening over feature.
- Can be added to existing carry systems.



GAS MASK CARRIER (belt)

C - 20630

Colour: Black

Size: 25.0 cm (H) x 25.0 cm (W)
9.84" (H) x 9.84" (W)

- Ideal for carrying various models of respiratory and spares.
- Padded sides for added protection
- Twin quick release straps(adjustable) fastens and secures
- 2 way velcro fastening with press stud locking feature (fits horizontally or vertically)

C - 20631

GAS MASK CARRIER (thigh)

Colour: Black

Size: 25.0 cm (H) x 23.0 cm (W)
9.84" (H) x 9.06" (W)

- Ideal for carrying various models of respiratory and spares.
- Adjustable belt to thigh extension strap with QRS (quick release system)
- Carrier can be worn on standard belt also, totally universal in carrying positions options.
- Velcro release strip fastens and secures the carrier
- 2 rubberised/velcro thigh fastening straps fastening with mini QRS



GAS MASK CARRIER (waist/ thigh)

G - M17 - 30

Colour: Black

Size: 25.0 cm (H) x 25.0 cm (W)
9.84" (H) x 9.84" (W)

- Ideal for carrying various models of respiratory and spares.
- Fixed waist and thigh straps sewn to the carrier, yet still adjustable to suit various sizes.
- Twin quick release straps(adjustable) fastens and secures the carrier

**MINI ACCESSORY POUCH****C - 22000****Colour:** Black**Size:** 11cm x 8cm -
4.33 " x 3.15 "

- Can carry multiple devices
- Attaches horizontal or vertical
- Flap close over feature
- Molle attachment - (universal fitting)

C - 22002**MAXI ACCESSORY POUCH****Colour:** Black**Size:** 18cm x 14cm -
7.09 " x 5.51 "

- Velcro closure flap with compartment
- 2 internal separate compartments
- Centre zip closing
- Molle attachment - (universal fitting)

**STRAP & CARRY POUCH****C - 22005****Colour:** Black**Size:** 21cm x 15cm -
8.27 " x 5.91 "

- Velcro closure flap with compartment
- 1 x front outer compartment
- Centre zip closing
- 2 x inner compartments
- Molle attachment - (universal fitting)
- Comes with shoulder strap

**LARGE ACCESSORY POUCH****C - 2170710****Colour:** Black**Size:** 14cm (L) x 15cm (W) x 8cm (H) -
5.51 "(L) x 5.91 "(W) x 3.15 "(H)

- Velcro closure flap with QR button
- 1 x large compartment
- Molle attachment - (universal fitting)

C - 22001**UNIVERSAL MULTI POUCH****Colour:** Black**Size:** 17cm (L) x 12cm (W) x 7cm (H) -
6.69" (L) x 4.72" (W) x 2.76" (H)

- Velcro closure flap with compartment
- 3 x inner compartments
- 1 x side outer compartment
- Single Velcro strap attachment with press stud lock - (universal fitting)





HANDCUFF CASE (Standard)

C - 20700

Colour: Black

Size: 12.0cm (H) x 9.5cm (W)
4.72" (H) x 3.74" (W)

- Ideal for carrying any standard sized restraint/handcuff devices.
- Front velcro and press stud locking feature.
- Curved inner allows for 'quick deployment' of devices.
- 2 way fastening feature, fits horizontally and vertically with velcro and press stud feature for added security.

C - 20700 - 1

HANDCUFF CASE (Large)

Colour: Black

Size: 15.5cm (H) x 10.5cm (W)
6.10" (H) x 4.13" (W)

- Ideal for carrying any large or oversized restraint/handcuff devices.
- Front velcro and press stud locking feature.
- Curved shaped inner allows for 'quick deployment' of devices.
- 2 way fastening feature, fits horizontally and vertically with velcro and press stud feature for added security.



RESTRAINT CASE (Universal)

C - 217079

Colour: Black

Size: 13.0cm (H) x 8.5cm (W)
5.12" (H) x 3.35" (W)

- Ideal for carrying disposable cuff cutter types of tools
- Velcro over flap secures devices
- 2 way fastening feature (fits horizontally or vertically)

MAGAZINE POUCH Revolver - Twin

C - 20830



Colour: Black
Size: 8.5cm (H) x 12cm (W)
 3.35" (H) x 4.72" (W)

- Attaches and carried horizontal, vertical or angle positions.
- Slide on or snap attachment onto belt.
- Flap close with Velcro over feature

C - 20840

MAGAZINE POUCH Revolver - Single

Colour: Black
Size: 8.5cm (H) x 6cm (W)
 3.35" (H) x 2.36" (W)

- Attaches and carried horizontal, vertical or angle positions.
- Slide on or snap attachment onto belt.
- Flap close with Velcro over feature



C - 21100

MAGAZINE POUCH Semi - Auto / Single

Colour: Black
Size: 14cm (H) x 4cm (W)
 5.51" (H) x 1.57" (W)

- Attaches and carried horizontal, vertical or angle positions.
- Hardened insert sleeve
- Slide on or snap attachment onto belt.
- Flap close with Velcro over feature



C - 20810

MAGAZINE POUCH Semi - Auto / Twin

Colour: Black
Size: 14cm (H) adj x 11.3cm (W)
 5.51" (H) adj x 4.45" (W)

- Attaches and carried horizontal, vertical or angle positions.
- Hardened insert sleeves.
- Adjustable flap to suit various models.
- Slide on or snap attachment onto belt.
- Flap close with Velcro over feature



BATON RING (Straight)**C - 22121**

Color: Black

Size: 12cm (L) x 2.5cm (W)

4.42" (L) x 0.98" (W)



- Attaches and carried horizontal, vertical or angle positions.
- Slide & press stud feature attachment onto belt.
- Velcro & press stud feature over flap.
- Protective inner lining
- Can be added to existing carry system.

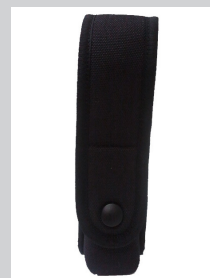
C - 22200 - 1**BATON HOLDER 16"**

Color: Black

Size: 18cm (L) x 3cm (H) x 4cm (W)

7.10" (L) x 1.81" (H) x 1.60" (W)

- Attaches and carried horizontal, vertical or angle positions.
- Slide & press stud feature attachment onto belt.
- Velcro & press stud feature over flap.
- Protective inner lining
- Can be added to existing carry system.

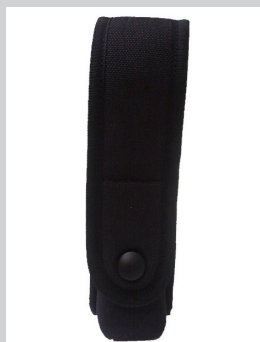
**BATON HOLDER 21"****C - 22201 - 1**

Colour: Black

Size: 19cm (L) x 3cm (H) x 4cm (W)

7.50" (L) x 1.81" (H) x 1.60" (W)

- Attaches and carried horizontal, vertical or angle positions.
- Slide & press stud feature attachment onto belt.
- Velcro & press stud feature over flap.
- Protective inner lining
- Can be added to existing carry system.

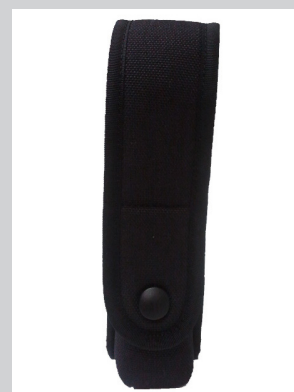
**C - 22204 - 1****BATON HOLDER
21" - 24"**

Colour: Black

Size: 22cm (L) x 3cm (H) x 4cm (W)

8.70" (L) x 1.81" (H) x 1.60" (W)

- Attaches and carried horizontal, vertical or angle positions.
- Slide & press stud feature attachment onto belt.
- Velcro & press stud feature over flap.
- Protective inner lining
- Can be added to existing carry system.



**FLASHLIGHT UNIVERSAL (sml)****C - 21410****Colour: Black**

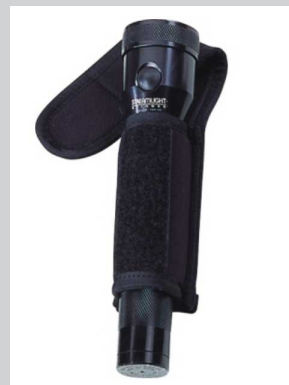
Size: 12.5cm to 15.5 cm (H)
x 2.5cm (W)
4.92" to 6.10" (H) x 0.98" (W)

- Fits most small sized flashlights as well as many others.
- Velcro over flap fastening feature (fits horizontally or vertically)

C - 21400**FLASHLIGHT UNIVERSAL (med)****Colour: Black**

Size: 12.5cm to 15.5 cm (H)
x 3.5cm (W)
4.92" to 6.10" (H) x 1.48" (W)

- Fits most medium sized flashlights as well as many others.
- Velcro over flap fastening feature
- 2 way fastening feature (fits horizontally or vertically)

**FLASHLIGHT UNIVERSAL (TACLITE)****C - 21400****Colour: Black**

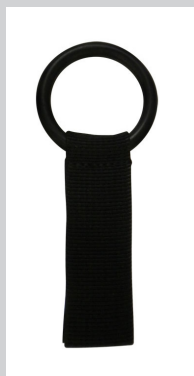
Size: 12.5 to 20.0 cm (H)
x 3.5cm (W)
4.92" to 7.87" (H) x 1.48" (W)

- Fits most larger sized flashlights as well as many others.
- Velcro over flap fastening feature
- 2 way fastening feature (fits horizontally or vertically)

C - CELL CARRIER**C - 22121****Colour: Black**

Size: 12 cm (H) x 3.5cm (W)
4.72" (H) x 1.38" (W)

- Ideal for carrying c cell size flashlights or straight batons
- Twin press stud fastening feature

**D - CELL CARRIER****C - 22122****Colour: Black**

Size: 13.5cm (H) x 5.2cm(W)
5.31" (H) x 2.05" (W)

- Ideal for carrying d cell size flashlights or other devices
- Twin press stud fastening feature



AEROSOL CASE (med)**C - 21112****Colour:** Black**Size:** 12.5cm (H) x 4cm (W) -
4.92125 " (H) x 1.57480 " (W)

- Used to both OC and CS aerosols.
- Attaches and carried horizontal, vertical or angle positions.
- Flap close with Velcroover feature

C - 21113**AEROSOL CASE
(large)****Colour:** Black**Size:** 16.5cm (H) x 4cm (W) -
6.49606 " (H) x 1.57480 " (W)

- Used to both OC and CS aerosols.
- Attaches and carried horizontal, vertical or angle positions.
- Flap close with Velcro over feature

**AEROSOL BELT CARRIER (Fogger)****C - 4170904****Colour:** Black**Size:** 22cm (H) x 8cm (W) -
8.66141 " (H) x 3.14960 " (W)

- Used to both OC and CS aerosols.
- Attaches and carried horizontal, vertical or angle positions.
- Flap close with Velcro over feature

C - 4170904 - 2**AEROSOL THIGH CARRIER (Fogger)****Colour:** Black**Size:** 22cm (H) x 8cm (W) -
8.66141 " (H) x 3.14960 " (W)

- Used to both OC and CS aerosols.
- Attaches and carried horizontal, vertical or angle positions.
- Flap close with Velcro over feature
- Includes thigh carry and belt extension straps





DURESS POUCH with hole

C - 81120

Colour:: Black

Size: 12.5cm (H) x 5.5cm (W)
4.92" (H) x 2.20" (W)

- Designed to hold standard dress devices.
- Press stud and velcro over flap.
- 2 way fastening feature (fits horizontally or vertically)

C - 22004

FIRST AID POUCH

Colour: Black

Size: 15.0cm (H) x 10.0cms (W)
5.91" (H) x 3.94" (W)

- Ideal for carrying multiple devices
- Twin zipper feature on main compartment
- Front velcro pouch
- Mole attachment



911 RESCUE TOOL POUCH

C - 217079

Colour: Black

Size: 13.0cm (H) x 8.5cm (W)
5.12" (H) x 3.35" (W)

- Ideal for carrying many types of rescue tools
- Multiple sizes article fitting pouch
- Velcro over flap secures devices
- 2 way fastening feature (fits horizontally or vertically)



C - 21100

MULTI TOOL POUCH

Colour Black

Size: 14cm (H) x 4cm (W)
5.51" (H) x 1.57" (W)

- Ideal of carrying multi tools
- Complete with poly-plas insert
- Press stud and velcro fastening over lap.
- 2 way fastening feature (fits horizontally or vertically)





DURESS POUCH with hole

C - 81120

Colour:: Black

Size: 12.5cm (H) x 5.5cm (W)
4.92" (H) x 2.20" (W)

- Designed to hold standard dress devices.
- Press stud and velcro over flap.
- 2 way fastening feature (fits horizontally or vertically)

C - 22006

UNIVERSAL CARRY

Colour: Black

Size: 15.0cm (H) x 23cm (W)
5.91" (H) x 9.05" (W)

- waist fitting carry pouch.
- designed to hold universally size and shaped devices.
- waist strap with QRS.(quick release system) in addition a secondary twin molle attachment.
- zipper releasing front access pouch.
- 2 x specially designed carry pouches in one product.
- main compartment with two way zipper fastens and secures.
- ideal for those who need to carry devices in one pouch.
- fits horizontally or vertically-multiple carry position



PROTECTIVE HELMET BAG

C - 80052

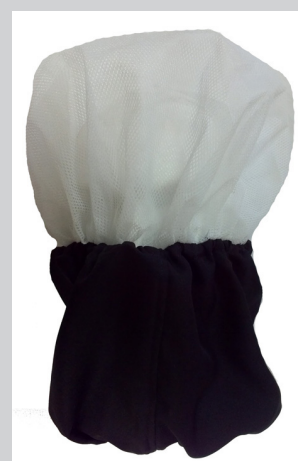
Size: 50 CM (L)
86cm (circumference opening)

- This bags comes with a drawstring closure clip.
- Made from 210D grade nylon, lightweight and flexible.
- Ideal for carrying various styles, sizes and models of helmets as well as any other operational products.
- Ideal for use when carrying any type of protective helmet.

C - 8076

SPIT HOOD Level 2

- Ideal for use by carers of self harmers, or any person requiring transporting during custody or escorts.
- A netted (white) high tensile upper material, with a spit resistant lower (black) section, strengthened with a dual core elasticised strip.
- Does not restrict vision or impede the wearer.
- Totally adjustable and can fit directly over a head or over any protective helmets.
- Single use and disposable product.
- Heavy duty





EXPANDING POUCH

C - 2171403

Size: 10 cm (L)
10cm (W)
Expands to 22cm (L)
Expands to a 50cm (circumference opening)

- This product can be carried as a compact pouch or as an expansion pouch.
- The pouch opens up to a carry pouch system, allowing the carriage of wet or dry device too.
- Ideal for carrying multiple sized devices.
- Molle carry system, with twin zipper feature and tactical deployment strip.

C - 2170712

UNIVERSAL POUCH

Size: 12 CM (H)
8cm (W)
5.5cm(D)

- This pouch secures multiple devices and even keys.
- Has a 1"(2.5cm) holding strap inside the pouch, allowing you to fasten clips and o-rings.
- Press stud locking feature for added security and with Velcro snap also for tactical deployment.
- Molle attachment system (can be fitted horizontally & vertically)



GAS MASK HARNESS Standard

G - M17 - 02

Size: 8.5cm x 5cm (head piece)
6 x directional straps

- A level entry respirator harness assembly made from Cordura™.
- Fits most popular 6 x pointmasks/respirators.

C - FM12 / HAN

GAS MASK HARNESS Netted

Size: 12.5cm x 7cm (head piece)
6 x directional straps

- A specialists respirator harness assembly made from Cordura™.
- Ideal for hot climate use.
- Fits most popular 6 x point masks/respirators



SECURITY ESCORT - RESTRAINT BELT C - EB01

Size: 190 cm (L) belt max
70cm (L) belt min
7.5 cm (W)

This belt allows the escorting of persons to be carried out in a safe and secure manner.

The belt fits a various size range from XS to XXXL.

It comes with a padded Velcro inner attaching feature, for a comfortable fit.

Fastens with a twin press stud feature for added security.

Has a frontal loop for the securing with metal or disposable restraint use.

C - 80620**FIRE EXTINGUISHER CARRIER
(Tactical Thigh)**

Colour: Black

Size: 38cm (H) x 12cm (W)
14.96" (H) x 4.72" (W)

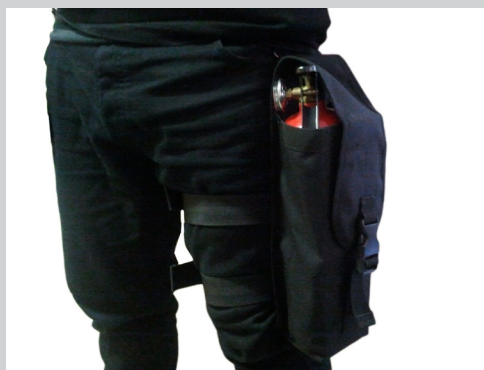
Can carry any type of 1kg powder extinguisher

Velcro over flap with QRS snap (adjustable)

3 x adjustable/elasticised thigh straps.

Belt extension strap secures the carrier to the waist.

Multiple carry position.

**FIRE EXTINGUISHER CARRIER (Molle)****C - 8170904**

Colour: Black

Size: 38cm (H) x 12cm (W)
14.96" (H) x 4.42" (W)

Can carry any type of 1kg powder extinguisher

Velcro over flap with QRS snap (adjustable)

Molle attachment system, can be attached horizontally or vertically.

Multiple carry position.



MULTI CARRY Belt / Molle

C - 22001

Colour: Black

Size: 7.0cm extends to 20cm (H)

x 15cm (W)

2.76" extends to 7.87" (H) x 5.91" (W)

7 x specially designed carry pouches in one product.

Ideal for those who need to carry multiple devices in one pouch.

Designed to hold universally size and shaped devices.

Velcro over flap fastens and secures.

2 way velcro and press stud fitting feature(fits horizontally or vertically)

C - 22008 MULTI UNIVERSAL CARRY Belt / Thigh / Strap / Molle

Colour: Black

Size: 21.0cm extends to 26cm (H)

x 18.5cm (W)

8.27" extends to 10.24" (H) x 7.28" (W)

11 x specially designed carry pouches and 2 x molly carry positions in one product.

Ideal for those who need to carry multiple devices in one pouch.

Has 1 x large wet carry pouch.

Designed to hold universally size and shaped devices.

Velcro over flap fastens with 3 x QRS which secures all over flaps for added security.

Can be carried as a pouch or tactically attached to the thigh, multiple carry position.

2 way carry fitting feature(fits horizontally or vertically)



MULTI CARRY Belt / Thigh / Strap / Molle

C - 61003



Colour: Black

Size: 10 cm extends to 17 cm (H) x 14cm (W)

3.94" extends to 6.7" (H) x 5.51" (W)

4 x specially designed carry pouches and 2 x Zipper securing pouches in one product.

Ideal for those who need to carry multiple devices in one pouch.

Has 1 x Molle plate attachment ideal for carrying the pouch or can be detached and carried on any other accessory.

Designed to hold universally size and shaped devices.

Velcro over flap fastens & secures all over flaps for added security.

Can be carried as a pouch or tactically attached to the thigh, multiple carry position.

2 way carry fitting feature(fits horizontally or vertically)

C - 22006

MULTI CARRY Belt / Molle

Colour: Black

Size: 15.0cm (H) x 23cm (W)

5.91" (H) x 9.05" (W)

Waist fitting carry pouch.

Waist strap with QRS.(quick release system) in addition a secondary twin molle attachment.

2 x specially designed carry pouches in one product.

Ideal for those who need to carry devices in one pouch.

Designed to hold universally size and shaped devices.

Zipper releasing front access pouch.

Main compartment with two way zipper fastens and secures.

Fits horizontally or vertically-multiple carry position



ASSAULT DAY PACK

C - 22700



Color: Black

Size: 45cm (L) x 35cm (W) x 25cm (D)
17.71" (L) x 13.78" (W) x 9.84" (D)

Comes with dual slider zipper feature.

1 x Top grab/carry handle.

Consists of One large compartment & one medium sized compartment on the front.

Has 2 x adjustable straps with quick-release buckles.

Adjustable shoulder straps (padded)

Adjustable cinch tabs to keep the pack close to body from 6 portions of loop.

Front of pack has 4 loops. Both sides of pack have 8 loops each.

Bottom of pack has 4 loops. Totally 20 loops can additional pouches attachment on upper portion of pack and bottom and both sides.

2 straps fit for compression stuff sacks or sleeping bag, etc .

C - 22703

OPERATIONS SURVIVAL PACK

Colour: Black

Size: 43cm (L) x 30cm (H) x 20cm (D)

- max to 30Kg

16.93" (L) x 11.81" (H) x 7.87" (D)

- max to 30Kg

Special anti-skid padded shoulder belts can adjustable up, down & across.

One large double layer back bag with several functional inside layers & pockets.

Comes complete with 6 x multiple & various kinds of molle system pouches.

Over 100 + different carry points.

Can be attached to existing operations bags.



TRACER FIELD & DEPLOYMENT PACK

C - 61005



Colour: Black

Size: 40cm (L) x 40cm (H) x 40cm (D)
15.75" (L) x 15.75" (W) x 15.75" (D)

Special anti-skid padded shoulder belts can adjustable up & down.

Waist belt clip system also.

It comes with dual slider zipper feature.

Ergonomic side & lower back padded panels

Stealth side access zipper section into main compartment.

Inc 2 x side external compartments (adjustable).

Inc 1 x Top secure compartment, with dual zipper.

Inc 11 x internal compartments

Extra Padding for added security of devices.

With over 100 + different carry points.



COMPACT CARRY BAG

C - 21833



Colour: Black

Size: 30cm (L) x 15cm (w) x 15cm (H)
11.81" (L) x 5.90"(W) x 5.90" (H)

Comes with dual slider zipper feature.

1 x carry handle.

1 x shoulder strap

Consists of One large compartmented bag & one medium sized compartment carry bag which can be removed and carried separately.

Has protective over flap section.

Also includes 2 x outer secured pockets.

C - 61001

COMBAT / OPS PACK

Colour: Black

Size: 42cm (L) x 30cm (H) x 13cm (W)
16.53" (L) x 11.81" (H) x 5.12" (W)

Special anti-skid padded shoulder belts can adjustable up & down.

On Shoulder, Back or Hand carry position.

It can be attached to existing pack.

Includes a weapon carriage capability.

2 x Side concealment zippers

12 medium –large compartments (which can be isolated and secured separately)



EQUIPMENT CARRY BAG

C - 21860



Colour: Black

Size: 70cm (L) x 30cm (H) x 30cm (W) max to 30Kg.
27.56" (L) x 11.81" (H) x 11.81" (W) max to 30Kg.

Special anti-skid padded shoulder belts can adjustable up & down.

Hand, shoulder and back pack carry positions.

It consists of one large compartment bag with 3 x large outer pockets.

Ideal for carrying large sized equipment. I.e. helmets and body armour

**DUTY KIT BAG
SMALL****H - M1****Colour:** Black**Size:** 55cm (L) x 30cm (W) x 30cm (H)
21.65" (L) x 11.81" (W) x 11.81" (H)

Telescopic handle & wheels.

Grab / Carry handles.

2x Outer pouches (zips).

2x Skid plates

H - M2**DUTY KIT BAG
MEDIUM****Colour:** Black**Size:** 65cm (L) x 35cm (W) x 35cm (H)
25.60" (L) x 13.78" (W) x 13.78" (H)

Telescopic handle & wheels.

Grab / Carry handles.

2x Outer pouches (zips).

2x Skid plates

**DUTY KIT BAG
LARGE****H - M3****Colour:** Black**Size:** 75cm (L) x 45cm (W) x 45cm (H)
29.53" (L) x 17.72" (W) x 17.72" (H)

Telescopic handle & wheels.

Grab / Carry handles.

2x Outer pouches (zips).

2x Skid plates

ONE POINT SLING TACTICAL**C - 21918****Colour:** Black

Specially designed and durable one point weapon carry sling.

1 x QRS (Quick Release System) clip for quick and tactical operations.

High tensile strength elasticated strap, with adjusting clip fits most sizes.

Designed to incorporate 1 x one way high strength clip to attach to multiple types of weapons and devices.

Multiple carry position.

C - 21916**RIFLE SLING SNIPER****Colour:** Black

Specially designed and durable sling ideal for weapon carry.

2 x Snap release attachments are included for quick and tactical operations.

High tensile strength Cordura padded strap, with adjusting clip fits most sizes.

Multiple carry position.



VEST OUTER CARRIER

C - 21700



Colour: Black
Size: p.o.a

Made to measure sizing

Designed as a 'throw over' vest, secures and releases on both sides, with a Velcro fastener.

7 x universal pouches enabling the carriage of multiple sized objects for quick and tactical operations.

Radio strap feature included

Rear ID carrier.

C - 21715

VEST MESH Universal / Molle

Colour: Black
Size: p.o.a

Made to measure sizing

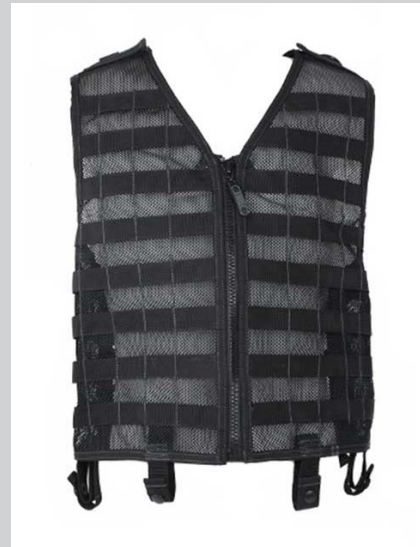
Made from woven nylon (600D), secures and releases on each side with 3 x adjustable straps/ fasteners.

16 x molle straps (front/sides) and 5 x molle straps (rear) allows you to place multiple pouches and carriers anywhere on the vest in any position.

6 x attaching straps to fasten onto dress or duty belt for added retention.

Person down drag strap on the rear with large rear inner pocket.

Adjustable shoulder straps with Velcro fasteners & pass through D-rings.



VEST Projectile Carry

C - 8072



Colour: Black
Size: p.o.a

Made to measure sizing

Made from Cordura, in a 'throw-over' style and secures and releases on each side with 2 x adjustable straps/ fasteners.

4 x pouches (10cmL x 4.5W)-Front upper & 6 x pouches (14cmL x 7cmW)

- Front lower

Extra inserts/padding can be added to vests for added protection

Person down drag strap on the rear with large rear inner pocket.

Adjustable shoulder straps with Velcro fasteners.

Rear radio pouch carrier.