



Armadillo Riot Shields



CATALOGUE

NOTE:

Product availability may vary from time to time,
This Catalogue should only be used as a guide, we are not able to list all the products available from each manufacturer.



LONG RIOT SHIELD

| | SH001 | SH001A |
|----------------------|----------------|----------------|
| Height | 1829mm | 1829mm |
| Width | 570mm | 570mm |
| Blade Thickness | 4mm | 4mm |
| Back Panel Thickness | 3mm | 4mm |
| Weight | 7.5kg | 8.5kg |
| Handle Type | Dolly & Brolly | Dolly & Brolly |

Developed as the ultimate long shield for police and prison use.



MEDIUM RIOT SHIELD

| | SH002 | SH003 |
|----------------------|----------------|----------------|
| Height | 1650mm | 1650mm |
| Width | 570mm | 570mm |
| Blade Thickness | 4mm | 3mm |
| Back Panel Thickness | 3mm | 3mm |
| Weight | 7kg | 6.75kg |
| Handle Tyle | Dolly & Brolly | Dolly & Brolly |

Developed for use as a barrier shield for UK police forces for street tactics and intervention.

Australian Distributor: **SSPA** +612 4645 7600





INTERMEDIATE+ SHIELD

| | SH006 | SH007 | SH008 |
|----------------------|----------------|----------------|----------------|
| Height | 1200mm | 1200mm | 1145mm |
| Width | 570mm | 570mm | 570mm |
| Blade Thickness | 4mm | 3mm | 4mm |
| Back Panel Thickness | 3mm | 3mm | 3mm |
| Weight | 6kg | 5kg | 5.5kg |
| Handle Type | Dolly & Brolly | Dolly & Brolly | Dolly & Brolly |

Developed as the ultimate lightweight multipurpose shield for police use, later becoming the most widely used shield in both the UK and worldwide for police and security forces.



INTERMEDIATE SHIELD

| | SH009 | SH009A | SH010 |
|----------------------|--------|--------|--------|
| Height | 990mm | 990mm | 800mm |
| Width | 570mm | 570mm | 570mm |
| Blade Thickness | 4mm | 3mm | 3mm |
| Back Panel Thickness | 3mm | 3mm | 3mm |
| Weight | 5.25kg | 5kg | 4kg |
| Handle Type | C Type | C Type | S Type |

Developed for police units specifying a very lightweight compact shield for rapid deployment.



PRISON 4' C&R SHORT SHIELD

| | SH004 | SH005 |
|----------------------|------------|------------|
| Height | 1200mm | 1200mm |
| Width | 570mm | 570mm |
| Blade Thickness | 4mm | 3mm |
| Back Panel Thickness | 3mm | 3mm |
| Weight | 6kg | 5kg |
| Handle Type | C & R Type | C & R Type |

Designed originally for the UK Prison Service as the standard overhead cover and cell intervention shield for control and restraint tactics.

Australian Distributor: **SSPA +612 4645 7600**





SMALL (CAR BOOT) SHIELD

| | |
|----------------------|--------------|
| | SH011 |
| Height | 560mm |
| Width | 570mm |
| Blade Thickness | 4mm |
| Back Panel Thickness | 3mm |
| Weight | 3.25kg |
| Handle Type | D Type |

The smallest Armadillo available. Developed for use as a rapid intervention shield. Designed to stack on top of other Armadillo riot shields for maximum protection.



SMALL (ROOF) SHIELD

| | |
|----------------------|--------------|
| | SH012 |
| Height | 560mm |
| Width | 570mm |
| Blade Thickness | 4mm |
| Back Panel Thickness | 3mm |
| Weight | 3.25kg |
| Handle Type | D Type |

Developed for the UK Prison Service for personal protection involving enclosed spaces and roof work.



COMMANDER TYPE SHIELD

| | |
|----------------------|--------------|
| | SH014 |
| Height | 600mm |
| Width | 570mm |
| Blade Thickness | 3mm |
| Back Panel Thickness | 3mm |
| Weight | 4.2kg |
| Handle Type | S Type |

Developed for the UK Prison Service for personal protection involving enclosed spaces and roof work. It is seen now by many forces as a replacement for the round shield.

Australian Distributor: **SSPA +612 4645 7600**





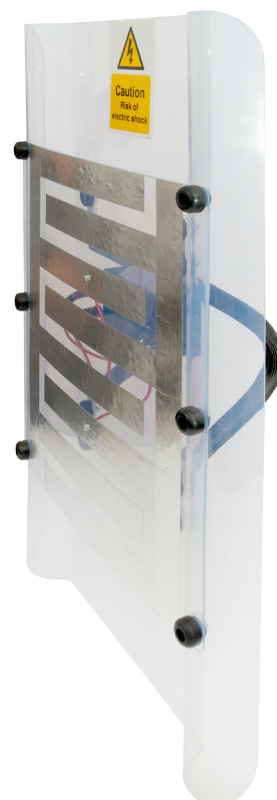
ANIMAL CONTROL SHIELD



| | SH050 |
|----------------------|--------|
| Height | 990mm |
| Width | 570mm |
| Blade Thickness | 3mm |
| Back Panel Thickness | 3mm |
| Weight | 6kg |
| Handle Type | S Type |
| Voltage | 50,000 |

Developed for UK police units only as a humane method of controlling dogs or other dangerous animals.

The Animal Control Shield (ACS) is only for use in operations such as drugs raids, where the officer may encounter a dangerous animal. The operator points the ACS at the animal and presses the red button activating the conductive strips. If the dog touches the strips it will receive a severe non-lethal shock. The strips also generate discharge sparks, accompanied by loud crackling noises, which will deter most animals. For added safety, the shield can only be activated with a specialist key.



ROUND SHIELD

| | SH020 |
|----------------------|---------------|
| Height | 660mm |
| Width | 660mm |
| Blade Thickness | 4mm |
| Back Panel Thickness | N/A |
| Weight | 2.2kg |
| Handle Type | Loop & Handle |

Australian Distributor: **SSPA** +612 4645 7600



Bespoke Services

If you have a specific size and configuration in mind that we do not stock, then we do offer a bespoke shield manufacturing service. It could not be more straightforward, simply choose from the options below.

1. Choose the height of your shield blade
2. Choose the width of your shield blade
3. Choose the thickness of your shield blade, (2.5mm, 3mm or 4mm)
- 4 Choose the thickness of your backing panel, (2.5mm, 3mm or 4mm)
5. Finally choose your handle configuration



Dolly & Brolly Handles
These are our standard handles on our larger Armadillo shields.



S-Type Handles
These are our specialist large loop handles for our medium to small Armadillo shields.



C-Type Handles
Offer the user a similar holding position as the Dolly & Brolly but is more compact for rapid deployment.



D-Type Handles
These are our standard handles on our smaller Armadillo shields.



C & R Handles
These handles were designed for Control & Restraint purposes for medium to large shields used in restricted spaces.



Storage and Operational use of Polycarbonate Riot Shields

Riot shields use polycarbonate plastic which is exceptionally strong and resistant to blows, impact and penetration.

Petrol and similar hydrocarbon solvents damage the plastic and eventually the shield will crack. It is therefore essential that proper handling and storage instructions are followed.

- Avoid any exposure to petrol, diesel, solvents or chemicals.
- Avoid exposure to exhaust fumes, central heating fumes, chemical vapours or contaminated stores with oily floors.
- Avoid scratching shields in storage or notching edges by careless handling or stacking.
- Store shields upright, and not in piles to avoid stress and distortion.
- Store away from direct sunlight.
- Store in temperature-stable conditions.
- Do not use solvents or chemicals to clean shields. If cleaning is required, use clean water and a clean cloth. Do not use abrasives. If slight scratching needs to be removed, use toothpaste and water, and finally wipe down with a cloth.
- If an operational shield is damaged or contaminated - do not use for operations. Report and mark item as defective.
- Operational and training shields will become scratched and marked. The more severe the damage, the greater the possibility of shield failure. **NEVER USE TRAINING SHIELDS ON OPERATIONS.** If a shield has been exposed to petrol bombs, chemicals or solvent attack, the shield is irreparably damaged and will fail.